

ALBEE'S GUN Bargain of the Month

REMINGTON
MODEL 870

"Brushmaster"

Deluxe
Deer Gun

12, 20 gauge

Reg.
\$230.00

Now Just

\$169⁹⁵

Check our complete
line of SKB, Remington,
Ithaca, Browning,
Savage, Weatherby, FIE
and Mossberg guns.

No Lay-Away On Item Of The Month

ALBEE HOME CENTER

Cass City

Phone 872-2270

Advertise It In The Chronicle.

Your Neighbor says

Grain embargo was right thing to do

President Carter was right in ordering an embargo on further grain sales to the Soviet Union in retaliation for that nation's invasion of Afghanistan, says Edsel Connell.

"I was for that before he proposed it," he commented. "I didn't vote for him, but I'm all for him doing that."

Connell admits the President's action may hurt farmers, "but there's always going to be an impact on somebody."

He also supports the other moves taken by President Carter, and favors either a boycott of the summer Olympics, scheduled to be held in Moscow, or moving them to some other country.

"Some of these athletes have been looking forward to this (the Olympics) their whole lives," the retired bus driver admitted, but explained he had some friends who went off to fight in World War II. They too were looking forward to doing certain things, but never returned from the war.

Connell also favors supply-

ing arms to the Afghans resisting the Russians, in fact, doing everything "short of going in (and fighting) and as a matter of fact, it may come to that."

Edsel Connell -- who never owned a car by that name -- retired in October, 1978, after 37 years, five-months and two days with Greyhound. He works part-time for Little's Funeral Home.

He and his wife, Fern, live on Decker Road, Decker. They have two children and three grandchildren.



Bean growers meet in Sandusky

A Sanilac County Bean Growers educational meeting will be held Friday at 9:30 a.m. at the VFW Building in Sandusky.

The meeting is sponsored by Sanilac County Bean Growers' Association and the Sanilac County Cooperative Extension Service.

All interested bean growers and their wives are invited. Free lunch will be provided by the Sanilac County agri-businesses.

Dr. Meggitt, Michigan State University, will discuss herbicides for beans and other cash crops. Dr. Wayne Adams, plant breeder from MSU, will discuss new upright direct harvest varieties.

A presentation by Dr. Don Christenson will focus on improving net income by following some accepted practices.

Clark now a corporal

Marine Cpl. James K. Clark, son of Eva Tkacz of 3539 Seventh Street, Owendale, has been promoted to his present rank while serving with the 1st Marine Division, Camp Pendleton, Calif.

He joined the Marines in August, 1976.

AROUND THE FARM

Savings on the farm

By Don Kebler



During the 20th century, except during the two World Wars and in the early 70s, American farmers have had to operate with "tight-belt" efficiency. So we are talking about twenty years in the last eighty.

Whenever the topic of conversation is "farm income, profit, costs, etc.," I try to think of some way the operator can save money in order to receive a higher net return.

Sometimes cost savings amount to pennies per unit and other times dollars per unit. Either way, it is saving. I once heard it said, "It is not the dollars we squander, it is the pennies." The dollars we are more careful in spending and the pennies we let slip thru our fingers.

One way farmers, like their non-farm business counterparts, make use of income tax savings is by using capitalized asset purchases. However, there is one restriction on this system. Either the purchase money or credit runs out or the machinery is too new to require an economic trade.

As far as cropping costs, I don't believe there is a farmer who couldn't reduce this cost some place. For example, I wonder how many fuel dollars are lost annually just by letting power equipment run unattended.

Another example where crop costs can be reduced is in agriculture chemicals. I have seen farmers using herbicides and insecticides not recommended for effective controls, making mixes not to the amounts to effect a control or applying them improperly.

Buying the wrong chemical is costly in itself, let alone buying another to achieve the control the first one didn't.

I see a considerable number of farmers still applying too much fertilizer or in the wrong ratios. Even though Michigan State Uni-

versity soil tests are taken and recommendations made, they are not followed.

I see where the average pounds of nitrogen, phosphorus and potash used in 1978 by our sugar beet growers was 78, 156 and 125 pounds respectively. The average yield for that year's crop was about 19 tons per acre. If I was to make the fertilizer recommendation, used in '78, the soil test would have shown no phosphorus, no more than 160 pounds of potash per acre (plus nitrogen according to the formula).

The average Michigan State University soil test results show higher soil tests of phosphorus and potassium than this, and lower fertilizer recommendations than the average used for a 19 ton per acre sugar crop. Therefore, some beet growers are using more fertilizer than needed for the yields obtained.

These are just a few examples of cost savings farmers are overlooking. Every dollar saved helps.

Concert set to aid Combodians

Rick Bonfim, Brazilian guitarist and soloist and an ordained minister in the United Methodist Church, will present a 1½-hour concert Sunday, Jan. 27, at 7:30 p.m. in the Laker High School auditorium.

Proceeds in excess of expenses will be given to the United Methodist Cambodian Relief Fund.

Bonfim has taken his music ministry to 45 states and six foreign countries in the past 12 years, during which he has performed more than 2,000 concerts.

The Jan. 27 concert is sponsored by the 17 United Methodist churches of the upper Thumb and the Top of the Thumb Leisure Minist-

ries, which is supported by 42 churches.

Tickets are available in advance at United Methodist churches or at the door, starting at 7 p.m. The high school is between Pigeon and Elkton on M-142.

Ask about

**MONTHLY
MONEY
FROM
MUTUAL**

**MUTUAL
SAVINGS**

DEERING PACKING

1 Mile North, ½ Mile East Of
Silverwood at 4808 E. Mayville Road

FRESH COUNTER MEATS

CHECK OUT PRICES ON

✓ LAMB ✓ PORK ✓ VEAL
✓ BEEF HALVES AND QUARTERS

**FOR BUSINESS TRUCKING AND
SLAUGHTERING CALL 517-761-7073**

HOUSEHOLD AND ANTIQUE AUCTION

Moving to Florida. We will sell at public auction at the place located 5 miles South, ¼ mile West of Cass City at 6168 Shabbona Road, the following personal property on:

SATURDAY, JANUARY 19, 1980

COMMENCING AT 10:00 A.M. SHARP

HOUSEHOLD GOODS

Magic Chef gas range
Sharp microwave oven w carousel
Whirlpool 17 cubic foot refrigerator
Revco 18 foot freezer
Whirlpool washer and dryer
Kirby vacuum cleaner w attachments
Kitchen table, 23 chairs
4 snack bar stools
Quantity of dishes, pots, pans, glasses
Card table and 4 chairs
Quantity of house plants
Copper pans
8 piece setting of China
Silverware
Black living room set, sofa and chair
Quasar 23 inch color TV, 1 year old
Black Forrest of Germany 8 day Cuckoo clock
Rockwell picture set
2 end tables
King size bed w springs
Dresser
Hutch
Phillipino lazy susan
Sterling silver

Bisque collection w cabinet
Quantity of Fostoria cut glass
6 leaded crystal chimes
Lead crystal punch bowl
8 leaded crystal goblets
Set of brass bells
Miscellaneous crystal dishes
Black Anthesis dishes
Italian glass coffee pot, cream and sugar
Ash tray collection
Brass collection
Cast iron Clydesdale horse and wagon collection
Pictures
Throw rugs
Rug presser
Gun cabinets
Adding machine
Dressmaker sewing machine
Electric child's organ
Toys
Doll house and toys
Pot belly stove

ANTIQUE

Rackers
Golden oak dresser w mirror
Golden oak chest w mirror
Hand hammered copper vases
Clothes closet w mirror
Hartford piano and bench
Victrola record player
Gossip bench
Lane cedar chest
Maytag washing machine
30 gallon butter churn
Horse drawn spike tooth harrow
Ideal cooker used in covered wagons
Gate leg table
Lantern heater
Sausage stuffer
Sausage press
2 gas lanterns
Powder box

Carpenter tool chest
Cherry table
Oak sewing rocker
Doll bed
2 china dolls
Coffee grinder
Pill boxes
Satin glass lamp
Wagon master tool box
4 pasted Georgian rocker
Primitive hand carved chair
5 leg oak table w 4 leaves, 6 chairs
Duncan Plyko round table
Chest of drawers
Quantity of miscellaneous china
Arabian spice dishes
Embossed picture frames and pictures
Thunder mug commode

MUSICAL INSTRUMENTS

Hawaiian Tremola guitar w case
Strier Tremola guitar
Rhodesian mandolin
2 guitars

G.E. AM-FM radio w 8 track tape deck
and BSR turntable
Solid state stereo

TOOLS

Rubber tire wagon with grain box
1936 John Deere H tractor, good condition
International H Farmall tractor, loader,
11-38 duals and rear weights
Words 10 inch table saw
Craftsman miter box
Craftsman router, complete
Black and Decker belt sander
Rockwell skill saw
Power planer
Jig saw
Sears 3 8 inch drill
Quantity of small hand tools
Gambles 5 H.P. rototiller
Dayton 8 H.P. riding lawn mower,
34 inch cut
3 ½ H.P. lawn mower
John Deere 400 snowmobile,
electric start, good shape
2 Suzuki DS 80 motorcycles, 1980
2 Huffy 10 speed bicycles
3 bicycles
Duck decoys
Swing set
Bird house, bird bath
Rabbit hutch & rabbits

Quantity of geese, ducks, 5 peacocks
Air compressor
Craftsman 12 inch band saw
Grinder w motor
Century 115 amp arc welder
50 amp booster battery charger
1 ½ H.P. stainless steel pump
motors and pumps
2 wheel trailer
36 foot extension ladder
Step ladder
Steel tool box for pickup
7 gallons white paint
Miscellaneous garden tools
Miscellaneous cement tools
4 drawer work bench
Pony cart
Set of 14 inch tires
Lawn chairs, porcelain table
Motorcycle helmets
Miscellaneous lumber
1978 Econoline 150 Van, 351 V-8, automatic,
cruise, CB, foam insulated, captain's
chairs, dual gas tanks, 24,000 actual
miles, rust proofed.
1967 Chevrolet C-10, ½ ton pickup.

A four-bedroom ranch home, built in 1978, will be offered at auction at 2 p.m. It has 1½ baths, living room, dining room, kitchen w/extras, fireplace, utility room, two-car garage on 2½ acres, pond. We reserve the rights on all bids on the Real Estate Only.

NOT RESPONSIBLE FOR ACCIDENTS AT SALE OR STOLEN
ITEMS -- ALL SALES FINAL
TERMS: Cash. All items must be settled for day of sale.
CLERK: Osentoski Auction Service
Statements made day of sale take preference over printed matter herein

Mr. and Mrs. Alfred Connolly, Owners

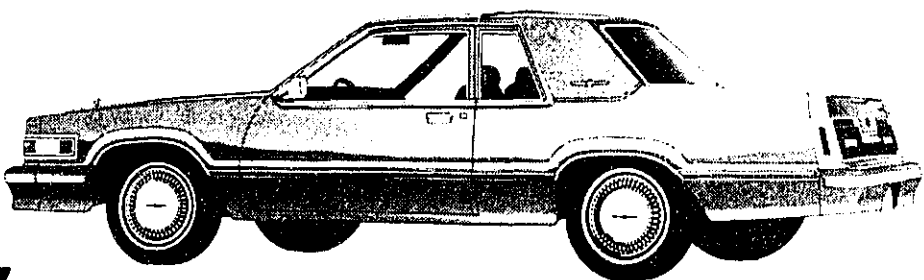
**OSENTOSKI
AUCTIONEERING**

AUCTIONEERS: Ira, David and Martin Osentoski
Phone Cass City 872-2352 or Bad Axe 269-9303

Geiger-Hunt is Celebrating its First Anniversary

NOW SAVE 2 WAYS AT GEIGER-HUNT

ALL '80
MODELS
IN STOCK



Test Drive the New Ford Thunderbird

PRICES INCREASED IN JAN.
ON ALL '80 MODEL FORDS

We Have A Wide Selection of 1980's
Purchased Before The Price Increase!
You Get The Savings.

**PLUS
FREE \$125 RUSTGUARD**

With Any New Vehicle Purchased

Hurry! The Free Rustguard Anniversary Special
Ends Jan. 31 and '79 Prices On Supply of 1980 Cars
Is Limited.

GEIGER-HUNT FORD, INC.

Phone 872-2300

Cass City

Hearing set for senior citizens

The Region VII Area Agency on Aging will hold a community forum Friday, Jan. 25, at the Lamotte Township Hall on Shover Road near Hemans from 2-4 p.m.

It will be one of four such meetings held in the 14 counties served by the agency.

Purpose of the forums is to give older persons the opportunity to express their opinions about the problems facing senior citizens.

While the agency will not be able to resolve all the problems discussed at the forums, the thoughts and ideas expressed will assist it in identifying and establishing priorities for action in the future.

Comments received will help the agency develop its activities plan for the next three years.

Your mind is like a checking account -- you can't draw out more than you put in.



**Give us a call, for
total insurance
coverage.**

We and Michigan Mutual can cover it all... your home, your car, your business. We'll tailor the right package of coverage to your needs, and payments to fit your budget requirements. Call us for full details.



Edward H. Doerr

Doerr Agency

6265 Main St.
Cass City
Phone 872-3615