

## 4-year project almost done

# Hospital ambulatory care unit now open

The ambulatory care facility at Hills and Dales General Hospital, for which Cass Cityans pledged \$500,000, is open for business.

The first two persons to use the facility did so Dec. 12. A 4½-month-old baby

was an emergency room patient and a cancer patient came to receive her chemotherapy.

They were thus using two of the three basic functions the facility is designed for.

There is what is called "emergency trauma care." There is a major emergency room for serious emergencies, such as persons severely injured in accidents and for cardiac patients (heart attacks, etc.).

There are two beds in that room plus two in the minor emergency room, used for treating persons with minor injuries and illnesses.

The old emergency room, according to ambulatory service Director Ken Carlile, RN, had only two beds. When there were more than two emergency patients, the "overflow" had to be put out in the hallway.

The old emergency room will be used for expansion of the X-ray department.

Also in the ambulatory care part of the building is a cast room, which contains the plaster, splints, etc., used for fixing broken bones.

The EEG and EKG room has an electroencephalograph for measuring brain waves to test for tumors, epilepsy, and vascular diseases, and an electrocardiograph for measuring heart stress and irregularities.

There is also a waiting room and reception desk.

**THE OUTPATIENT PORTION** of the building contains three clinic rooms, outpatient surgery operating room (plus recovery area and changing room) and laboratory room for blood testing.

One of the clinic rooms is for general purposes, such as checking heart pacemakers, administering chemotherapy and performing post-operation examinations. Another is for obstetrical-gynecological examinations and the third is for stomach and esophagus examinations.

The operating room will be used for operations which do not require the patient to be kept overnight in the hospital. It is presently serving as the hospital's only

operating room, while remodeling of the old operating room continues. That facility will still be used for major surgery.

All of the above described facilities are on one floor. Plans for the basement are incomplete, but the space will probably be used for classrooms and storage, according to hospital Administrator Ken Jensen.

Groundbreaking for the unit took place in August, 1978.

What is now a possibly \$1.5

million project consists of two parts, the now completed ambulatory care facility and renovation work inside the original hospital building.

The major work there has been installation of a new air handling system to improve what had been considered inadequate air circulation and to add air conditioning.

All of the renovation work inside the old hospital should be done by the end of February, Jensen said.

**WHEN THE PROJECT** was first announced in

March, 1976, the estimated total cost was under \$250,000 (ambulatory care facility and renovations).

It was under \$600,000 by the time the fund drive to raise \$500,000 in pledges began.

It was \$1.256 million when bids were opened in June, 1978. Changes, improve-

ments, bureaucratic delays in approving the project and inflation account for the cost increases.

Because of inflation since bids were opened and some changes, according to Jensen, the cost now may be as much as \$1.5 million.

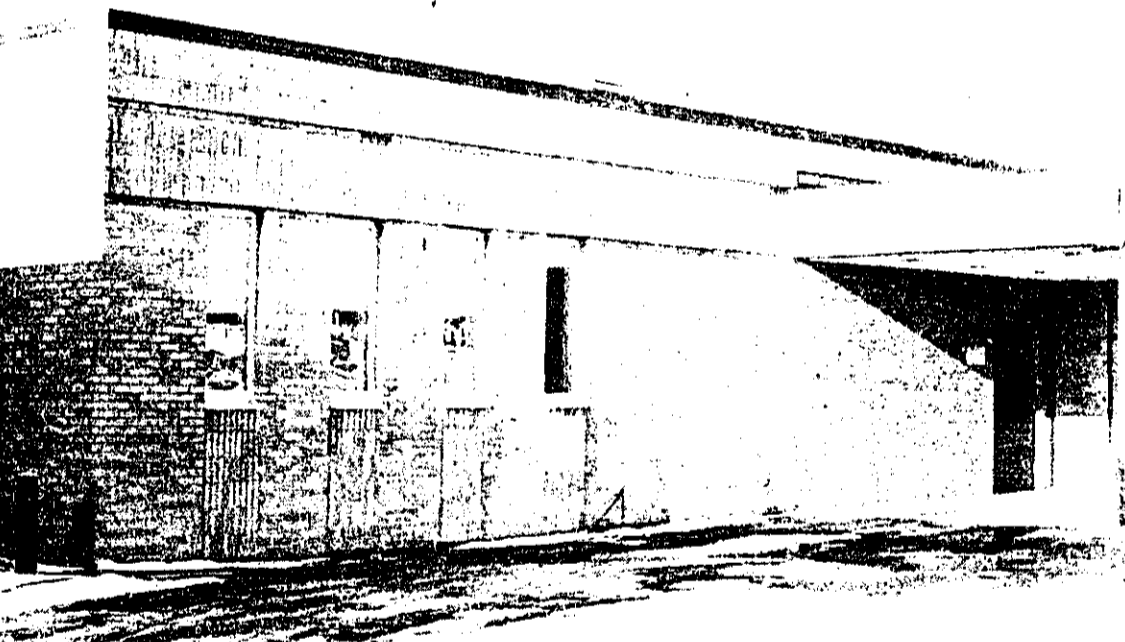
The cost above the \$500,000 pledged by the public will be

paid for out of accumulated hospital earnings and a bank loan, which the hospital will repay over the next 25-30 years.

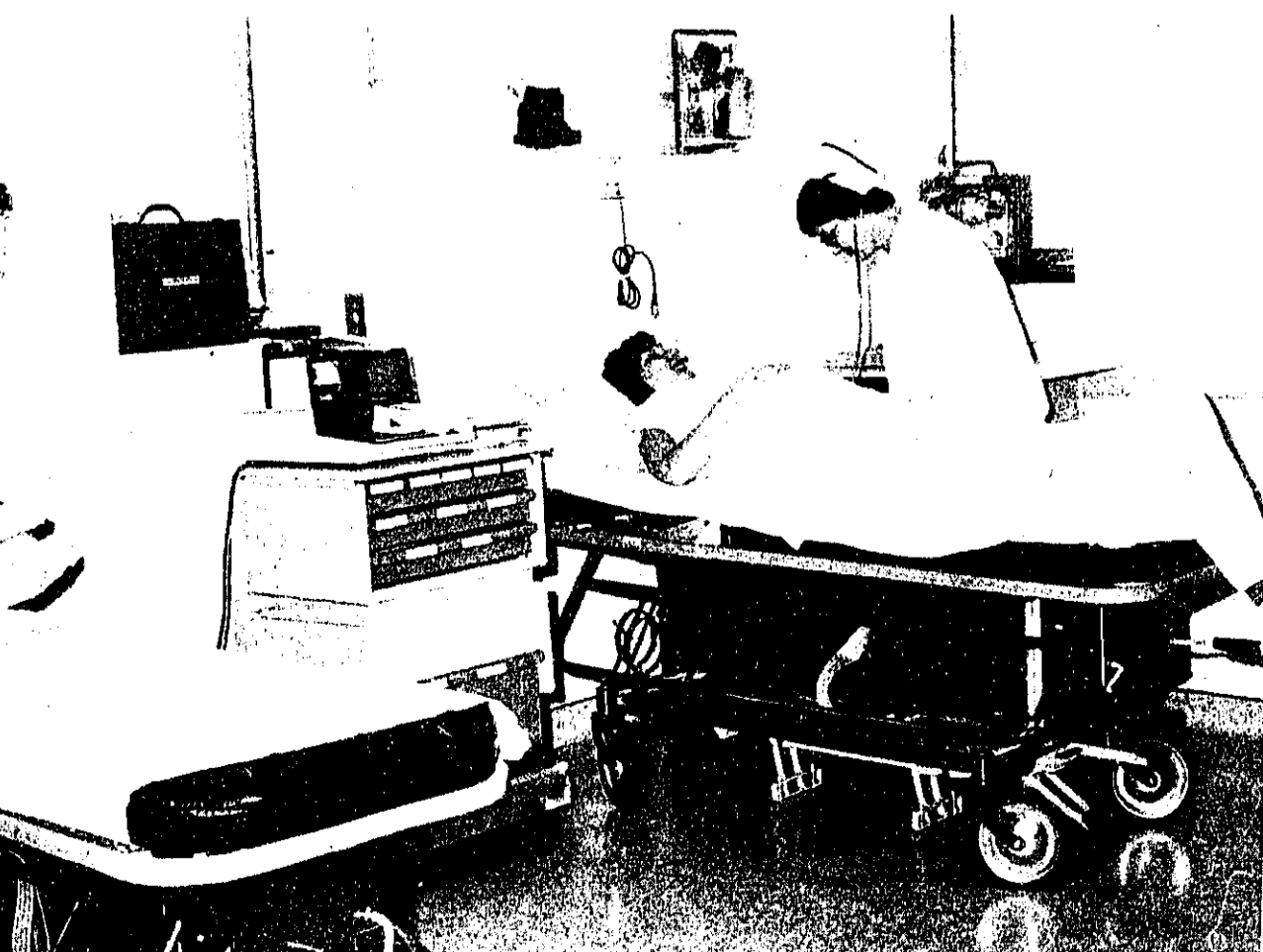
Members of the public won't have to become patients to see the new building. There will be an open house some time in the spring.



**ATTACHING ELECTRODES** to the head of volunteer "patient" Josephine Gray, a housekeeper at the hospital, is Pat Fox, LPN. The machine is an electroencephalograph, which tests for tumors, epilepsy, vascular diseases, etc. Also in the room is an electrocardiograph machine for measuring heart stress and irregularities.



**OUTSIDE VIEW** of the new ambulatory care facility at Hills and Dales General Hospital, which contains two emergency rooms plus an out-patient operating room and related facilities. Ambulances back into the covered-over area at right, with the emergency room a few steps down the hallway.



**EMERGENCY ROOM** -- Applying some emergency treatment in the new major emergency room to volunteer "patient" Jean Anthony, LPN, is Jan McGuire, RN. The machine between the two beds is a defibrillator, which can revive a faltered heartbeat.

## Oil exploration underway here

Continued from page one

price received for the oil no longer justified the cost of keeping the wells in operation.

Another factor is some new techniques can get oil out where it was very difficult to get it out before.

Based on seismic valuations, and data for old wells, his firm has come up with areas that show potential.

Leases are then obtained, he explained. The next step

## Lots of trees provide U.S. with timber

There are 182 species of trees in the U.S. Our Douglas fir, coast redwood and Southern pine are among the most desired species in all the world.

There are 500 million acres of commercial timber in the country, about 16 percent owned by forest products companies. These companies combat the ravages of insects, disease and fire, protecting their trees and producing wood, wildlife and recreation for generation after generation.

is then to do further evaluations with detailed seismic tests in those areas where leases have been obtained.

That basically is the status in the Cass City area now.

Probably in the spring more evaluation work will be done. The result may be that in the Cass City area or elsewhere, it is decided there is nothing there to make drilling worthwhile. "We just don't know," he commented.

Stoliker said it could be some years before something happens here -- if it does -- or it could be months. "These things develop pretty fast," he said, but cautioned that there is a lot of ground to cover. Cass City being only one area in a major portion of the state.

## Suspect still sought in

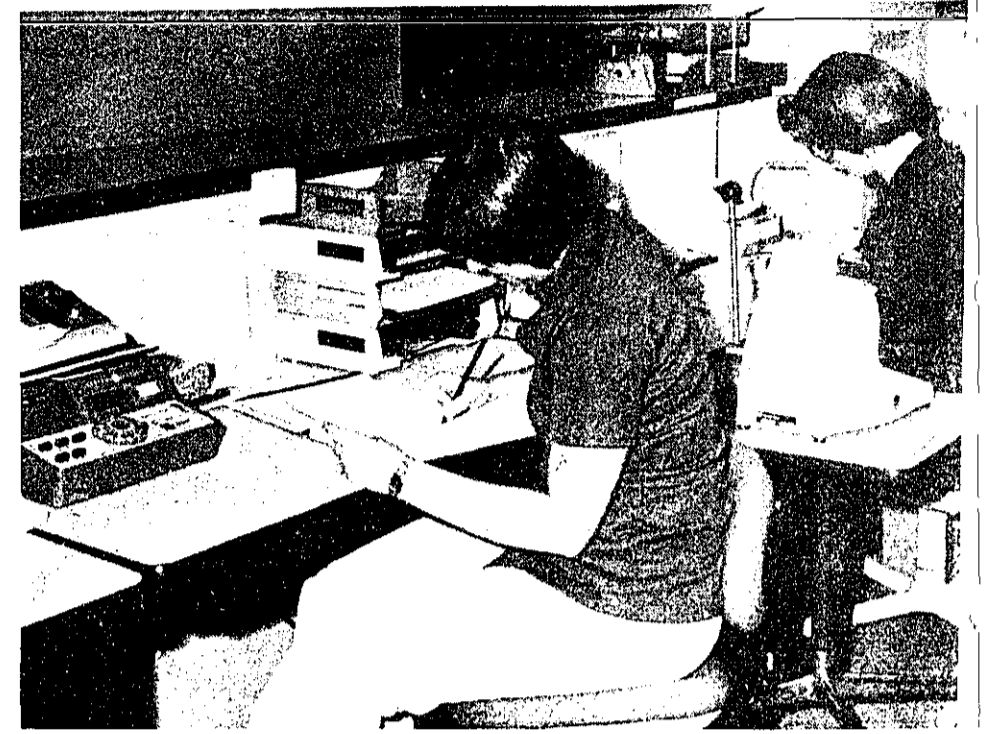
### Caro robbery

As of Wednesday morning, Caro police were still looking for a suspect they believe may have been the person who robbed the Capri Restaurant of "about \$1,000" Saturday night.

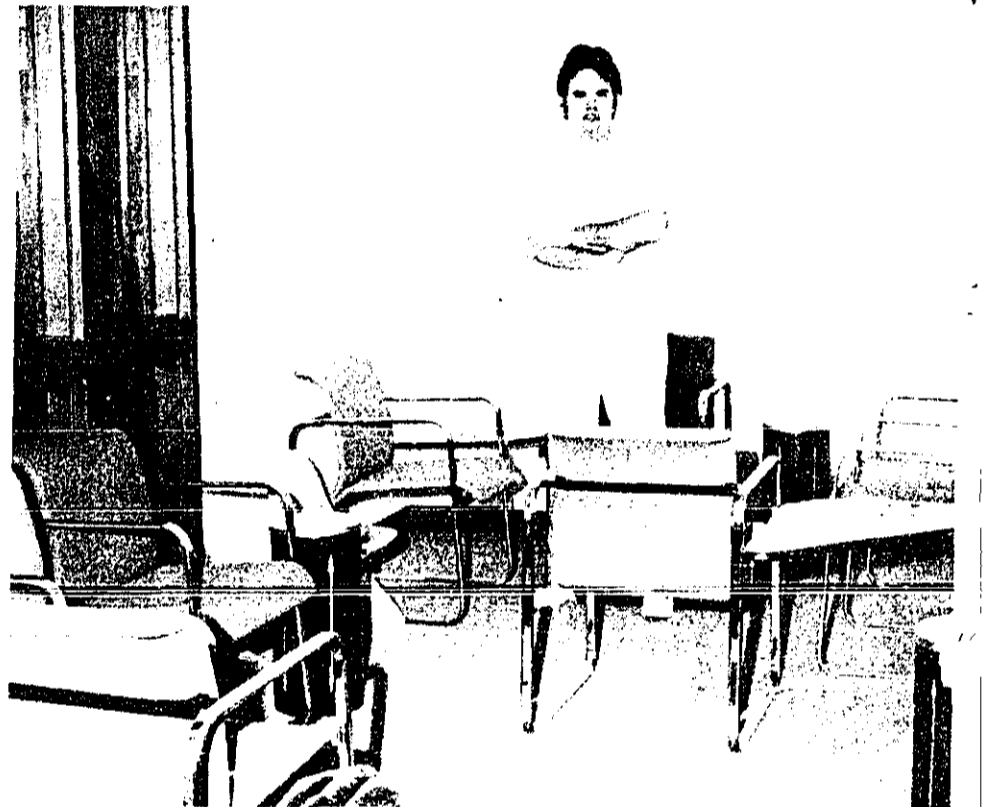
According to police, the bandit, wearing a blue stocking-type ski mask over his face, entered the restaurant at the southwest edge of town shortly before midnight. He was armed with a derringer-type pistol.

After demanding money from an employee, who emptied the cash register, the man escaped on foot.

A state police tracking dog was brought from Bay City, but lost track of the robber on a side street.



**RECEPTION AREA** -- At the desk in the new ambulatory care facility are Cindy Klaus (left) and Terry Posluszny. At far left is the radio which puts the hospital in contact with incoming ambulances and other hospitals.



**WAITING ROOM** -- Standing in a corner of the waiting room in the new ambulatory care facility is Ken Carlile, RN, ambulatory service director, who is in charge of the new unit.

**WANTED CORN**

Wheat, Oats, Soybeans & Sunflowers picked up on farm or delivered to elevator

**WE PAY TOP PRICES!**

**CHECK OUR PRICES TODAY**

On

**POTASH, LIME & CRUSHED STONE**

- New Spreader available for Spreading Lime
- Also hauling truckload lots of Fertilizer direct to farms

**FARMERS ELEVATOR CO.**  
Minden City Phone: 517-864-3400

**MICHIGAN SEEDS & SUPPLIES**  
Port Hope Phone: 517-428-4677

**PRINTING SERVICE**

Whatever your printing needs, we serve them right! Latest modern offset and letterpress equipment to assure you of the best results in every way.

**THINGS WE PRINT**

- TICKETS
- MENUS
- LETTERHEADS
- VOUCHERS
- BROCHURES
- BOOKLETS
- BUSINESS CARDS
- ACCOUNTING FORMS
- PROGRAMS
- STATEMENTS
- ENVELOPES

**The Cass City Chronicle**  
Phone 872-2010

<b>POT ROAST</b>	<b>\$1.39</b>
	Lb.
<b>HOT DOGS</b>	<b>\$1.07</b>
	Lb.
<b>GROUND BEEF</b>	<b>\$1.49</b>
From <b>CHUCK</b>	Lb.
<b>FRESH FISH</b>	• Perch • Walleye • Herring • Oysters
	Thurs. Noon, Fri. & Sat.
<b>HOGS</b>	Whole or Half <b>79¢</b>
	Lb.
<b>BEEF</b>	SIDE ¼ \$1.24 Lb. FRONT ¼ \$1.17 Lb. HIND ¼ \$1.36 Lb.
Homemade	
<b>PORK SAUSAGE</b>	<b>99¢</b>
	Lb.
<b>LINK SAUSAGE</b>	<b>\$1.39</b>
	Lb.
<b>CUSTOM CUTTING &amp; WRAPPING</b>	
<b>CUBE STEAK</b>	<b>\$1.89</b>
	Lb.
Fresh	
<b>SIDE PORK</b>	<b>69¢</b>
	Lb.
<b>Cass City Meat Market</b>	
6528 Main St.	Phone 872-4795