

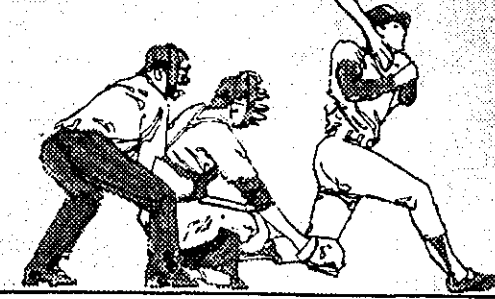








# SAVE!



during our **ZENITH**  
**GRAND SLAM VALUE DAYS**

**AND NOW...**  
the best picture we've ever brought you!

introducing all new 1974

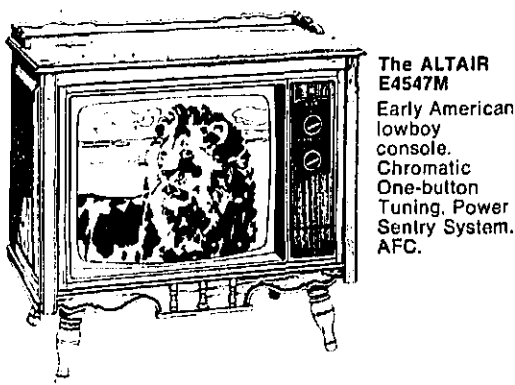
## ZENITH CHROMACOLOR II

23" giant-screen consoles

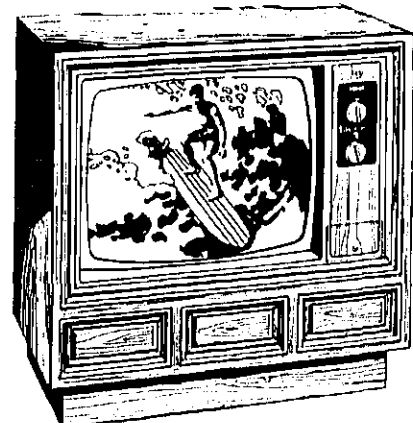
- brilliant new chromacolor picture!
- 100% solid state chassis!
- 30,000 volts\* of picture power!
- one-button chromatic tuning!

**YOUR CHOICE** of these fine-furniture styles!

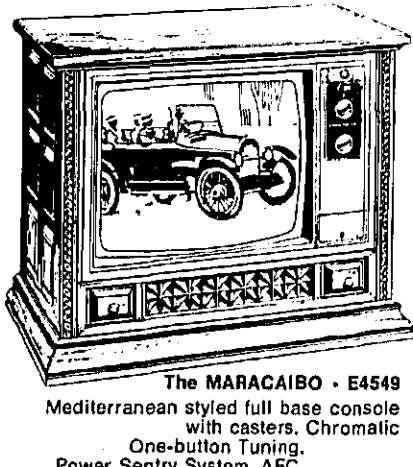
**EARLY AMERICAN STYLING**



**MODERN STYLING**

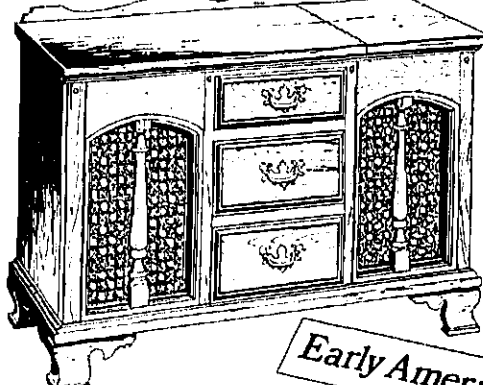
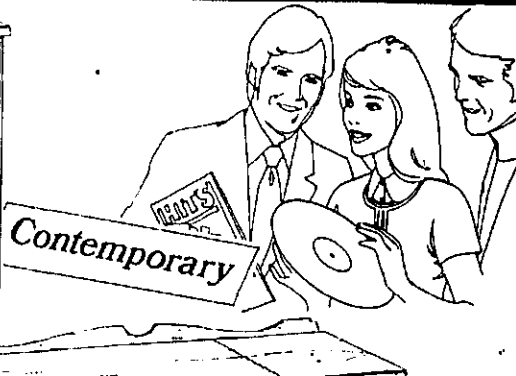
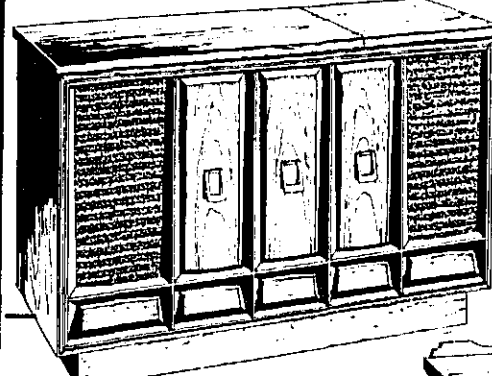


**MEDITERRANEAN STYLING**



**SAVE \$101.00**

## ZENITH SOLID-STATE CONSOLE STEREO



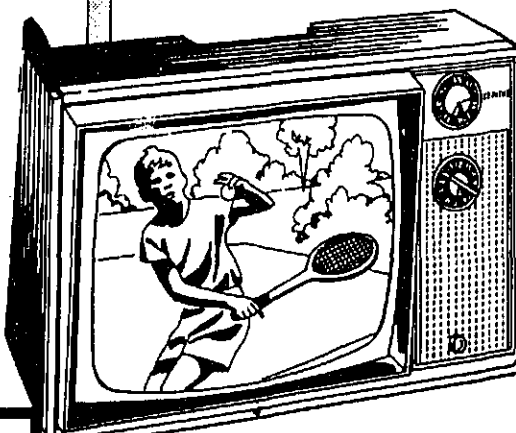
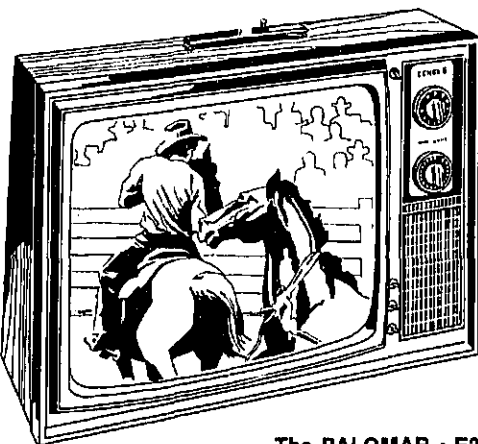
**YOUR CHOICE** OF 3 FURNITURE STYLES FOR ONLY

**\$258<sup>00</sup>**  
REG. \$309.00  
SAVE \$51.00

- THESE MODELS FEATURE:
- FM/AM/Stereo FM Radio
  - 20 Watts of Peak Power Output
  - Deluxe Custom-Matic Record Changer
  - Micro-Touch® 2G Tone Arm
  - Four Speaker Sound System

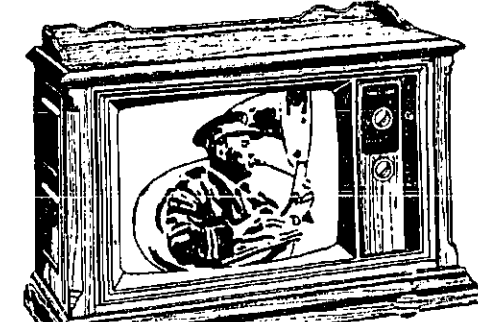
**\$89<sup>95</sup>**

ZENITH COMPACT 12" DIAGONAL



The DISCOVERER D1335 Features solid-state modules, Custom Video Range Tuning System, Giant 4-ft. antenna. Available in Fine decorator color combinations.

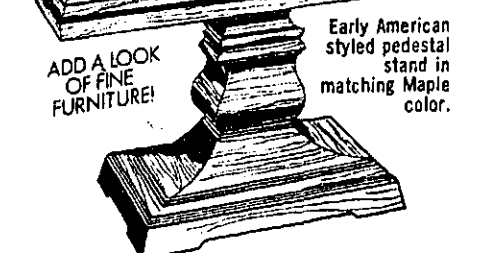
## ZENITH SOLID-STATE CHROMACOLOR II



**\$529<sup>95</sup>**

DON'T DELAY! STOP IN TODAY!

VALUE SENSATION!



19" diagonal measure screen

**\$478<sup>00</sup>**

100% SOLID-STATE CHASSIS

**TOP VALUE!**

## NEW 1974 ZENITH CHROMACOLOR

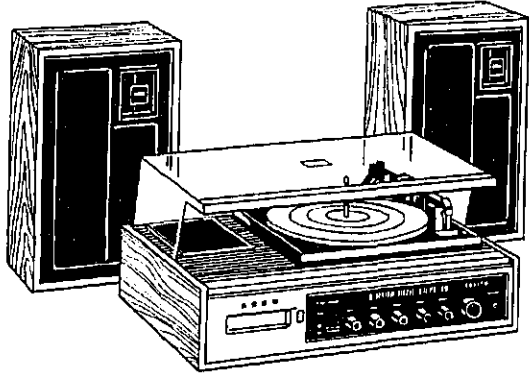
\* BRILLIANT COLOR PICTURE!  
\* OVER 90% SOLID-STATE CHASSIS!



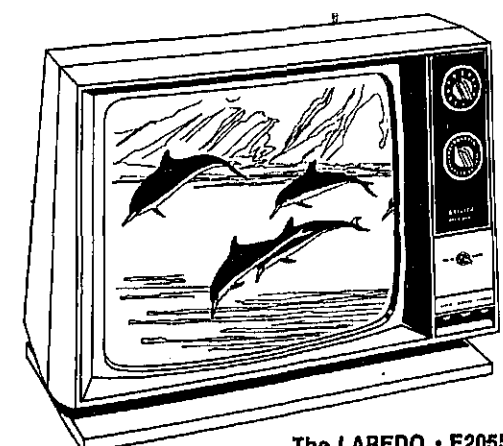
**SENSATIONAL LOW PRICE... \$359<sup>00</sup>**

FULL ZENITH QUALITY!

**NO PAYMENTS 'TIL MAY 1974**



**\$249<sup>95</sup>**



The LAREDO E2055

**SAVE \$30.00**

"WIDEST SELECTION IN THE THUMB"

# Schneeberger's

TV APPLIANCES FURNITURE  
Cass City  
Phone: 872-2696

**OPEN EVERY SATURDAY AFTERNOON  
FREE PARKING**













# Shabbona Area News

Marie Meredith  
Phone 672-9489

The RLDS Women's Department monthly bake sale will have Mrs. Robert Sawdon, Mrs. Bruce Kritzman and Mrs. Floyd McIntosh in charge. The Bunco Club met Saturday evening, April 6, at the Shabbona Hall with Mr. and Mrs. Alex Wheeler, hosts. High prize was won by Jeff Wheeler and low prize went to Robert Wheeler. The door prize was won by Andy

Hoagg. The next meeting will be April 20 with Mr. and Mrs. Fred Emigh, hosts.

Mr. and Mrs. John Dunlap were Saturday callers at the home of Mr. and Mrs. Harold Trisch and sons of Cass City.

Sunday dinner and afternoon guests at the Ralph Smith home were their grandchildren, Ryan and Kevin Smith.

Mr. and Mrs. Dean Hoag and family of Cass City were Sunday dinner guests of Mr. and Mrs. Andy Hoagg.

Mr. and Mrs. John Dunlap were Saturday afternoon guests of Mr. and Mrs. Don Smith and family.

Ruth Smith attended a school conference Thursday evening in the Crosswell High School.

The Shabbona RLDS Church will have an Easter breakfast at 7:30 a.m. Sunday, followed by a special Easter service at 9:00 sponsored by the young adults and Zion League. Worship service is from 10:00 to 11:00. Special guest speaker will be Elder Jerry Cleland of Ubly.

About 120 Zion Leaguers and parents attended a roller skating party at the Snowier Rink, which was sponsored by the RLDS District Zion League.

Todd Vatter was a Saturday and supper guest of the Dale Leslie family.

## SHABBONA METHODIST CHURCH

Easter services at the Shabbona United Methodist Church start with a communion service Thursday evening at 8:00 p.m.

Easter morning, the sunrise service will start at 7:00, followed with a breakfast sponsored by the youth.

Regular services are to follow with Sunday School at 10:15 and worship service at 11:15 a.m.

In the evening, a movie on the Resurrection will be shown at 8:00 p.m.

## Deford woman injured at Evans Products

A Deford woman was injured Monday morning at Evans Products Co. in Gagetown and was listed in fair condition at Hills and Dales General Hospital Tuesday. Delila Little was reportedly injured in an accident involving a fork lift truck, although this could not be confirmed. Officials at Evans declined comment on the incident, saying an investigation of the accident had not been completed.

## Your neighbor says I may not be there

When President Nixon arrives in Cass City Wednesday, April 10, Joyce Turner of North Cemetery Road may not be among the throng to greet him.

"I really haven't been that interested in the election," Mrs. Turner said. "I really doubt if I would go."

Mrs. Turner said she hasn't decided yet whether she'll vote for Republican James Sparling or Democrat J. Robert Traxler, adding that her mind won't be made up until she walks into the voting booth.

Mrs. Turner, whose husband works for the Tuscola County Department of Social Services, is a native of the

Owendale-Gagetown area. The Turners have lived in the Cass City area the past year



**GRIM'S DRIVE-IN**  
**EASTER SPECIAL**  
Hot dog - French Fries **\$1.00**  
and Small Coke -  
Easter Sunday Only  
M-81 and M-53, CASS CITY  
PHONE 872-3780

**Motorcycle Insurance**  
Get our Low Rates & immediate coverage.  
**Doerr Ins. Agency**  
PHONE 872-3615  
6440 HURON - CASS CITY

**AROUND THE FARM**  
**U.S. biggest energy user**  
By William Bortel

# YOUR CHOICE...

**THE NIXON REPUBLICAN**  
"My purpose will be to promote the President's programs the best I can..."  
*Saginaw News June 4, 1973*

**BOB TRAXLER DEMOCRAT**  
"My purpose will be to promote the interest of the people of this district the best I can... the way I always have. I think that's the choice in this election."

**ON TUESDAY, APRIL 16th**  
-A REFERENDUM ON NIXON ADMINISTRATION POLICIES-

- 12% UNEMPLOYMENT! MORE THAN DOUBLE THE NATIONAL AVERAGE
- WITHHOLDING THE TRUTH
- COST OF LIVING SOARING AT 15% ANNUAL RATE!
- MR. NIXON'S TAXES... MR. AGNEW'S TAXES

## VOTE FOR BOB TRAXLER

Let's Work Together, Call  
Traxler Campaign Headquarters

SAGINAW 754-0451    BAY CITY 892-1596    BAD AXE 269-9963    LAPEER 664-5943

Paid For By The Traxler For Congress Volunteer Committee—Peter G. Seward, Chairman, 115 3rd Street, Bay City, Michigan 48706

The United States, with six per cent of the world's population, uses about 35 per cent of the energy consumed each year. On a per capita basis, this makes the U.S. the world's largest energy user, followed by Canada and Sweden. Consumption is increasing at a rate of 4.9 per cent per year. At this rate the U.S. energy demand will double in less than 15 years and triple in 23 years.

How does agriculture fit into the energy picture? In 1972, U.S. agriculture used about 6.2 billion gallons of fuel. This breaks down into 4.0 billion gallons of gasoline and 2.2 billion gallons of diesel fuel. Overall, agricultural production uses about three per cent of the national petroleum fuel consumption, the same proportion used in 1939 and slightly less than

three per cent of the electricity generated in the U.S. It takes only four per cent of the U.S. population to produce more food than the country needs, although there have been recent temporary shortages of some commodities. Abundant food supplies are made possible largely because of the extensive use of petroleum fuels and petroleum based fertilizers. Thus, agriculture in the U.S. is highly dependent on petroleum fuels.

Even though food prices increased in 1972, U.S. consumers spent only 16 per cent of their disposable income for food - the lowest percentage of any country in the world. The quality and variety of food available on supermarket shelves in this country is unequaled anywhere. To maintain ample supplies of reasonably priced food, agriculture will need a continuing supply of petroleum fuel or a suitable substitute.

State of Michigan. In the Circuit Court for the County of Tuscola.  
Clara A. Kile, Plaintiff, -vs- James R. Kile, defendant.  
Michael D. Dennis, Attorney for Plaintiff.  
None - Attorney for Defendant.  
File No. 74-000031-DM.  
A True Copy, Marilyn Craig Dep.

**ORDER TO ANSWER**  
At a Session of said Court, held in the Courthouse in the City of Caro, in said County, on the eighth day of March, 1974.  
Present: Norman A. Baguley.

On the 28th day of January, 1974, an action was filed by Clara A. Kile, plaintiff, against James R. Kile, defendant, in this Court for a Judgment of Divorce.

**IT IS HEREBY ORDERED** that the defendant, James R. Kile, shall answer or take such other action as may be permitted by law on or before the eighth day of June, 1974. Failure to comply with this Order will result in a Judgment by Default against such defendant for relief demanded in the Complaint filed in this court.

S/ Norman A. Baguley,  
Michael D. Dennis, Attorney for Plaintiff, Business Address: 239 E. Huron Avenue, Bad Axe, Michigan 48413.  
3/28/4

## Novesta Church lists services

The Novesta Church of Christ will commemorate the closing hours and resurrection of Christ with a special candle-light service surrounding the communion at 7:30 p.m. Thursday evening.

Sunday morning at 7:00 a.m., a Sunrise service will be presented by the Senior High Youth. They will present a drama, "Thomas Believes." The music will be presented by the Junior High Youth. This service will be followed with a continental breakfast.

The morning worship services will be held as usual. Sunday evening, the Youth meetings will not be held and the movie, "The Man of Steel", will be presented at 7:00 p.m. for all age levels. This is a full color story, taken in the Yukon, of a young man who received everything from his parents but the one thing he needed most, faith. The public is invited to all activities.

**SIMULATED ENGRAVED BUSINESS CARDS**  
Available 1-Color or 2-Color  
**The Cass City Chronicle**

## WILDWOOD FARMS

4 miles east, 1/4 south of Cass City

### DANCING EVERY SATURDAY - 9:30 p.m.

**RESTAURANT - LOUNGE**  
Tues.-Sat. - 11 a.m. to 2:30 a.m.  
Sunday - 11 a.m. to 8 p.m.  
CLOSED MONDAY

**Private Banquet Facilities**  
RESERVATIONS CALL 872-2720

**New! SATIN FINISH**

# 110 BONUS PHOTO

Actual Size 4"x 5"

**FROM YOUR 110 KODACOLOR FILMS**

## FILM SERVICE HITE QUALITY

We Accept All PRE-PAID **Your** PRESCRIPTION PLANS **BANKAMERICARD** (FREE PARKING IN THE REAR) *welcome here*

### COACH LIGHT PHARMACY

MIKE WEAVER, Owner    Ph. 872-3613  
Emergency Ph. 872-3283

## Good things happen on a Honda.

**ESPECIALLY THE NEW '74 CB 750 - K4**

Complete Selection in Stock    All Colors in Stock

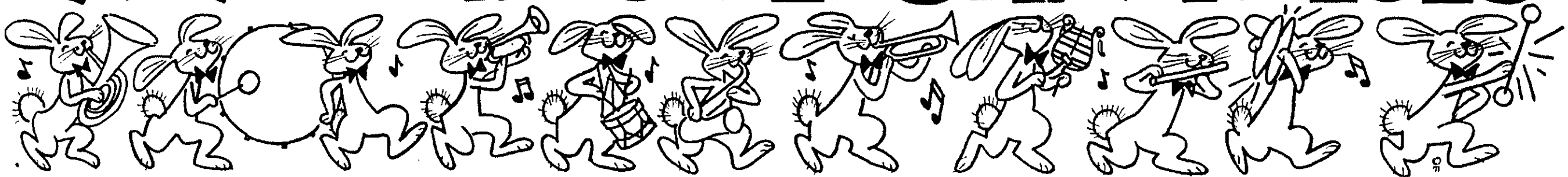
CB-750K4. Here comes the bike that made history. One of the most authoritative, smoothest-running and powerful machines Honda offers. A motorcycle famous around the world for its smoothness, its comfort—and the confidence it provides to every rider who's ever headed toward the open road. The Honda 750 almost seems to do the whole job of handling for you... you're along for the ride, and perhaps it's the best ride in the motorcycling world.

That we were able to improve upon it was a challenge—but you'll appreciate the refinements we've added for 1974. Like new looks—subtle but they're there. New pin striping on the fuel tank. A new seat cover pattern. New speedometer face. New colors. Instrumentation that's easier to read, day or night. A locking seat and helmet holder. Turn signal switch with a reminder buzzer in far left and right positions. An electric starter interlock that requires the bike to be in neutral or the clutch to be disengaged before all that power goes to work. Running lights are added. Adjustable rear shock springs. There's a rear grab rail, too. The CB-750 K4 might be called the bike of the future—because its future is guaranteed by the past and proven performance of what many people call the superbike of all superbikes. When you're ready to move up to the best, move to the CB-750 K4. It's motorcycling at its ultimate. CB550-360 Also available.

# CARO HONDA SALES

1382 E. CARO RD.    PH. 673-2680

# PARADE IN FOR EASTER VALUES



FRESH WHOLE OR RIB HALF (SLICED FREE) **PORK LOINS** LB. **87¢** ERLA'S HICKORY SMOKED (WHOLE OR SHANK HALF) **HAMS** LB. **79¢**

TENDER AGED BEEF BLADE CUT **POT ROASTS** LB. **97¢** ERLA'S HICKORY SMOKED **PICNICS** LB. **57¢**

ERLA'S EASTER SPECIAL  
**FRESH POLISH SAUSAGE**  
**\$1.23** lb.

ERLA'S EASTER SPECIAL  
**SMOKED POLISH SAUSAGE**  
**\$1.15** lb.

FRESH PAN READY **FRYERS**  
WHOLE CUT-UP  
**43¢** lb. **47¢** lb.

FRESH PICNIC CUT **PORK ROASTS** lb. **49¢**

ERLA'S MILD SENSATION  
**SKINLESS FRANKS - RING BOLOGNA** lb. **79¢**  
**LARGE BOLOGNA (CHUNK)**

HICKORY SMOKED (WHOLE OR HALF)  
**SEMI-BONELESS HAMS** **97¢** lb.  
HICKORY SMOKED (WHOLE OR HALF SKINLESS)  
**FULLY BONELESS HAMS**  
**\$1.09** lb.

U.S. NO. 1 MICH. POTATOES	20 lb. bag	\$2.69
CELLO RADISHES (pkg.)	each	10¢
GREEN ONIONS (bunch)		
U.S. NO. 1 YAMS	lb.	19¢
SIZE 24 PASCAL CELERY		25¢
U.S. NO. 1 BANANAS	lb.	10¢

ERLA'S EASTER SPECIAL  
**ORANGE JUICE**

OLD SOUTH  
100% PURE FLORIDA FROZEN  
**ORANGE JUICE**  
**37¢** 12-oz. can



RICH'S FROZEN DIXIE WHIP  
**TOPPING** 10 oz. pkg. **33¢**

- HI-C ASST'D. **FRUIT DRINKS** 46-oz. cans **3/\$1**
- FAYGO DIET PASSION **FRUIT PUNCH** 16-oz. btls. **10¢**
- SWANSDOWN ASST'D. **CAKE MIXES** 18-oz. pkgs. **3/\$1**
- WARSAW **POLISH DILLS** 48-oz. jar **79¢**
- CHADALEE PURE, POLISH **HORSERADISH** 5-oz. btl. **29¢**
- ALCOA HEAVY DUTY **ALUMINUM FOIL** 25-ft. roll **59¢**
- PUNCH **DETERGENT** 49-oz. pkg. **59¢**

SEE OUR COMPLETE LINE OF **SHARI EASTER CANDY**



ROYAL **GELATIN** 3-oz. pkg. **8¢**

- LADY KAY **POTATO CHIPS** 12-oz. pkg. **69¢**
- LADY KAY **ICE CREAM** 1/2 gal. **69¢**
- SANI-SEAL **COTTAGE CHEESE** lb. ctn. **49¢**
- SANI-SEAL **WHIPPING CREAM** 1/2 pt. **39¢**

- KEYKO **MARGARINE** 16-oz. pkgs. **2/89¢**
- BAKER'S **CHOCOLATE CHIPS** 12-oz. pkg. **49¢**
- KRAFT MINIATURE **MARSHMALLOWS** 10-oz. pkg. **29¢**
- KRAFT PHILADELPHIA **CREAM CHEESE** 8-oz. pkg. **39¢**

CAMPBELL'S **TOMATO SOUP** 10 1/2-oz. cans **7/\$1**



PENNSYLVANIA DUTCH PIECES & **MUSHROOMS** STEMS 4-oz. cans **4/\$1**

NON RETURNABLE **PEPSI** 16-oz. btls. **8/\$1<sup>19</sup>**

OKRAY'S FROZEN HASH BROWN **PATTIES** 24-oz. pkg. **49¢**

(10¢ COUPON IN EACH PACKAGE TOWARD PURCHASE OF DOZ. EGGS)

SUNSHINE **HI-HO CRACKERS** 1-lb. box **49¢**

OVEN FRESH **TEA ROLLS** pkgs. **3/\$1**

OVEN FRESH **LUMBER JACK BREAD** 1 1/4-lb. loaf **2/89¢**

OVEN FRESH **SPICE CAKE** **49¢**

QUANTITY RIGHTS RESERVED **SPECIALS GOOD THRU SATURDAY APRIL 13**

**Erla's Food Center**  
IN CASS CITY  
OPEN MONDAY THURSDAY TO 6 P.M.  
FRIDAY TO 9 P.M.  
SATURDAY 8:00 A.M. TO 6 P.M.  
**BEER WINE**  
MEMBER T.W. FOOD STORE

**Maxwell House Instant COFFEE** 10-oz. jar **\$1.39**  
SAVE 50¢ WITH THIS COUPON  
GOOD ONLY AT: ERLA'S FOOD CENTER  
EXPIRES: SATURDAY, APR. 13, 1974

**KRAFT MIRACLE WHIP** 32-oz. JAR **77¢**



# EASTER... JUST A HOP AWAY!

*Fashion Flatters You...*

## SPRING DRESSES and PANT SUITS



PRETTY, FEMINE,  
STYLED TO PLEASE YOU



**Women's Purses**  
A WIDE SELECTION OF  
SPRING AND EASTER PURSES  
ONLY **\$3.98 to \$7.95**

**GIRLS' SPRING DRESSES and PANT SETS**  
Guaranteed to be the Hit of the Easter Parade

Stop in and look over our fine selection in the newest Spring Fashions for your daughter or granddaughter.

SIZES 3 to 12  
SHOP KRITZMANS' AND SAVE

**Men's Polyester and Textured Knit Double Knit PANTS**  
ASSORTED COLORS AND STYLES. PERMANENT PRESS  
**\$9.95 to \$14.95**

### WOMEN'S SLEEVELESS



**KNIT SHELL TOPS**

JEWEL NECK AND TURTLE NECK STYLES

**\$3.98 to \$5.98**

### Women's Short Sleeve

**KNIT SHELL TOPS**



- JEWEL NECK AND COLLAR TYPE
- ALL NEW SPRING COLORS

**\$4.98 to \$6.98**

### Women's

**BLAZER JACKETS**



WOVEN PLAIDS AND POLYESTER DOUBLE KNITS

ONLY **\$9.95 to \$13.95**

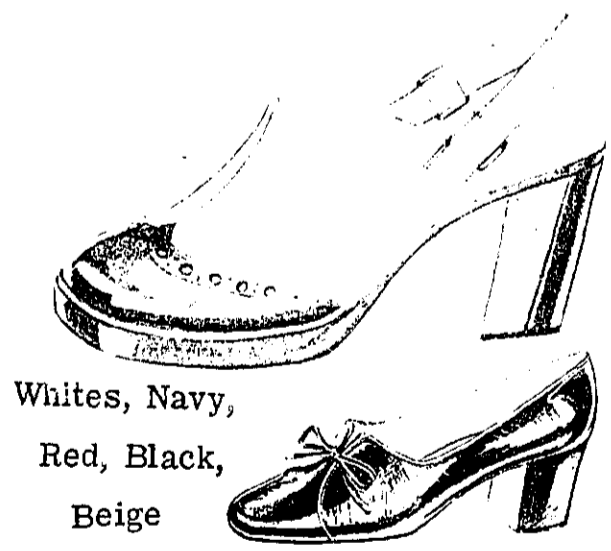
## Shoes for all the Family For Stepping Out This Spring

### WOMEN'S SPRING SHOES

LARGE SELECTION OF WOMEN'S FLATS AND DRESS HEELS

**\$8.95 to \$13.95**

- Charm Step Shoes
- Orchards and Jolene Shoes



Whites, Navy, Red, Black, Beige

### Fashioned for Little Feet

Made for Hopping, Walking, Running...

### CHILDREN'S SHOES

Children go hippity hopping to Easter time in shoes styled for them... priced for Moms.



**\$6.98 to \$9.95**

SEE OUR LARGE SELECTION

### MEN'S DRESS OXFORDS and LOAFERS

MANY STYLES AND SIZES TO CHOOSE FROM

**\$13.95 to \$19.95**

Shop and Save!



your **BANKAMERICARD** welcome here

# KRITZMANS', INC.

CASS CITY

WE HONOR **master charge** THE INTERBANK CARD

**ON TUESDAY APRIL 16th**  
 — A REFERENDUM —  
 ON NIXON ADMINISTRATION POLICIES  
 WATCH  
**BOB TRAXLER**  
 THE DEMOCRAT

●SATURDAY APRIL 13TH 9:55 CH. 12  
 ●SATURDAY APRIL 13TH 11:00 CH. 25  
 ●SUNDAY APRIL 14TH 6:30 CH. 12  
 ●SUNDAY APRIL 14TH 7:00 CH. 25

AND THEN SEND YOUR  
 MESSAGE TO CONGRESS

## Labor problems continue with layoffs at hospital

Labor troubles continued at Hills and Dales General Hospital following the layoff of several registered nurses and licensed practical nurses from the facility Friday.

The hospital had already been faced with the possibility of a strike by Local 2642 of the American Federation of State, County and Municipal employees when it took the action.

On the union front, contract talks remained stalemated following the appearance of a state mediator on the scene Thursday. Demands from the union were presented to the hospital board, including retroactive pay increases, parity with other area hospitals and an end to not replacing personnel who quit.

Talks are expected to resume by April 15.

Present economic conditions were given as the reason for the layoffs Friday which idled registered nurses.

One nurse who was laid off and who declined to be identified said Tuesday that she had heard rumors that the ax would fall the day before she and her co-workers found themselves without jobs.

All the layoffs were indefinite, she said.

"Morale was good at the hospital until this started," she said. "Our patient load was up and things looked better. Then this happened."

She said she will probably end up going to work at a Bay City hospital, and indicated the others who lost their jobs will probably not wait to be recalled by Hills and Dales.

She said recently, nurses' duties had increased to a point where during one night shift, she was responsible for

an entire floor of patients plus attending the emergency room.

"I just feel sorry for those nurses who are still there," she said. "We could have gotten by before the layoff, but now I am really concerned about the care of those patients."

She said attendants will also suffer because formerly RN's could assist them in patient care. Now, she added, this will be impossible.

The past two weeks have seen an overload of patients at the facility, the nurse said, which taxed most staff personnel to the limit.

The nurse said most of those affected by the layoff had been working at Hills and Dales and had been employed a year or less.

Another nurse who lost her job and who did not wish to be identified said eight RN's and one licensed practical nurse plus four attendants were laid off Friday.

She had been employed since September and said she had two days' notice that her layoff was coming. She blamed the hospital board for the economic situation and said if the union goes out on strike, a complete shutdown of the hospital is likely.

"I can't understand why this was allowed to happen," she said. "Aren't they (the board) supposed to know what's going on?"

Hospital officials were not available at press time to comment on the latest series of layoffs.

sound economic ground.

He indicated patient care will not suffer following the layoffs and said the hospital was overstaffed prior to Friday's action.

House said the action should aid in getting the hospital on a solid economic footing. He again said labor problems at the facility should not be negotiated in the newspapers and said published reports from union sources regarding the situation were inaccurate.

He did not elaborate.

Want Help Finding What You Want?  
 Try The Want-Ads Today!

# BEN FRANKLIN®

## Easter Savings

**PANTY HOSE**  
3 for \$1.00

**JELLY BEANS**  
TO FILL YOUR BASKET  
Tiny Eggs  
Jelly Bird Eggs  
Spiced Eggs  
**59¢** lb.

**FILLED EASTER BASKETS**  
**1.99**  
Filled with delicious Easter candies & toys.

**EASTER GRASS**  
Non-flammable.  
**39¢** Bag

**EGG DECORATOR**  
Turn egg holder & decorate with felt tip pens.  
**1.19**

**Shoulder Strap BEADED BAGS**  
Eye-catching accessory with hand-crafted look. Zipper closing. Two-tone color combinations.  
Our Low Price  
**1.88**

**LADIES SEAGRASS BAGS**  
**\$4.99** EACH

**Charge It!**  
Master Charge

**RUTH BARRY NAVY PANTY HOSE**  
**99¢**

**Candy Filled Pails**  
**87¢** Ea.  
Pretty play-pails and chock-full of tasty Easter goodies.

**PADDLE BALLS with CANDY**  
**47¢** Ea.

**Candy Filled Cowboy Hats**  
**97¢** Ea.  
Colorful straw cowboy hats and filled with tasty candy.

**Little Girl STRAW PURSES**  
**\$1.29**

**Ladies STRAW PURSES**  
**\$5.99**

**Ladies WHITE HAND BAGS**  
**\$3.99**

**LITTLE GIRL'S - WHITE ONLY BEADED BAGS**  
WITH GOLD CHAIN HANDLE  
**\$1.19**

**BEN FRANKLIN®**  
CASS CITY WHERE EVERYTHING YOU BUY IS GUARANTEED!

Services set at Baptist church

A crucifixion service was scheduled at First Baptist church Wednesday evening, April 10, at 7:30. Pastor Milton Gelatt of the Halbrook Baptist church was to speak and special musical selections were slated.

An Easter sunrise service is to be held at First Baptist at 7 a.m. Sunday. Lee Taylor, a ministerial student at Midwestern Bible College, will be the speaker. The service will be followed by a breakfast in the fellowship hall.

Regular services will be held Easter Sunday, with Sunday School at 10 a.m., worship service at 11 and the evening service at 7:30 p.m.

**We selected our best... to out-value the rest !!!**

- 1973 Vega Hatch-back coupe. New tires, very clean, only **\$1995.00**
- 1973 Nova SS auto, V-8 engine, power steering, vinyl roof **\$2995.00**
- 1972 Chev. Impala coupe, V-8 auto, power steering & brakes **\$2195.00**
- 1972 IHC 3/4 ton pickup 4 wheel drive, extra clean **\$2795.00**
- 1972 Dodge 1/2 ton pickup, red, like new, only **\$2395.00**

**THE BIG DIFFERENCE IN THE INNER CIRCLE IS VALUE!**

**OUVRY CHEV.-OLDS, INC.**  
Cass City

## DON'S AUCTION HOUSE

Auction every 1st & 3rd Friday  
7:00 p.m. till ?

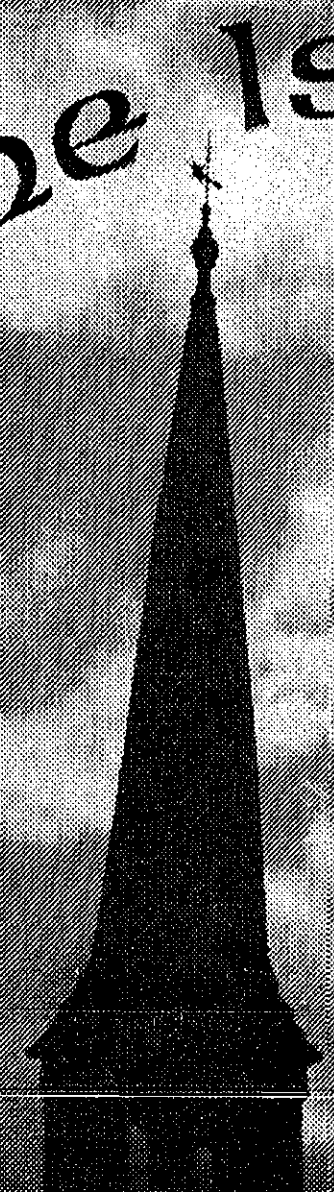
ANTIQUES, RELICS, COLLECTABLES,  
MISCELLANEOUS ITEMS

2019 Black River Rd. (W. Deckerville Rd.)  
18 miles east of M-53 or about 6 blocks  
west of red light in Deckerville, Mich.

Call Cass City 872-2406 for information  
**Next Sale Friday, April 19**

Advertise It In The Chronicle.

# He Is Risen



Clouds . . . and Light . . . and a bold spire! The symbols of man's wondering—his hope—his aspirations.

On a Friday the One they called Christ was dead. The world rolled on . . . nothing seemed changed. Then it was Sunday: Newness everywhere! He is risen! Men believe . . . gather . . . rejoice . . . promise.

He is Risen! Clouds break. Light shines in darkness. Our faith reaches upward . . . in bold certainty!

Copyright 1974 Keister Advertising Service, Inc., Strasburg, Virginia      Scriptures Selected By The American Bible Society

Sunday	Monday	Tuesday	Wednesday	Thursday	Friday	Saturday
Philippians 2:6-11	Matthew 27:11-54	Psalms 22:1-8	Mark 15:1-39	Luke 23:1-49	Exodus 14:15-15:1	Psalms 30:1-12

<b>Message Sponsored by These Progressive Firms</b>		<b>IGA FOODLINER</b> TABLETERITE MEATS 6121 Cass City Road, Cass City Phone 872-2645	
CROFT—CLARA LUMBER, INC. Phone 872-2141      Cass City, Mich.		KLEIN FERTILIZERS, INC. Phone 872-2120      Cass City, Mich.	
VERONICA'S RESTAURANT Phone 872-2550 "Good Home Cooked Food"		CASS CITY AUTO SUPPLY Machine Shop Service Paint PHONE 872-2626	
MAC & LEO SERVICE TOTAL PRODUCTS Cass City, Mich.      Phone 872-3122		FUELGAS CO. OF CASS CITY BULK—PROPANE SYSTEMS—FURNACES—RANGES—WATER SOFTENERS & OTHER APPLIANCES Junction M-81 & M-53      Phone 872-2161	
ANDERSON'S THUMB APPLIANCE 6422 West Main Street, Cass City, Mich. Phone 872-3505		Open 10 till 10 7 days a week <b>QUAKER MAID DAIRY</b> Groceries—Ice Cream Take Outs—Party Supplies Phone 872-9196	
HOTPOINT—KELVINATOR—GIBSON—MAYTAG—NORGE Phone 872-3850		<b>WESTERN AUTO ASSOCIATE STORE</b> 6467 Main St. Cass City, Mich.      Phone 872-2040	
VILLAGE SERVICE CENTER TIRES—BATTERIES—V-BELTS—TUNE-UPS—MUFFLERS—BRAKE SERVICE Cass City, Mich.      Phone 872-3850		<b>KRITZMAN'S CLOTHING</b> 6447 Main Cass City, Mich.      Phone 872-3470	
CASS CITY FLORAL FLOWERS & GIFTS Phone 872-3675      Cass City, Mich.		<b>OUVRY CHEVROLET-OLDS, INC.</b> Cass City, Michigan (Our aim is to please) 872-2750      872-3830	
MUTUAL SAVINGS & LOAN Your Investments Are Our Mutual Concern Open Saturday morning Cass City      Phone 872-2105		<b>GAMBLE STORE</b> Cass City, Michigan      Phone 872-3515	
<b>J &amp; C TOTAL</b> TIRES—WHEEL ALIGNMENT MECHANIC ON DUTY WRECKER SERVICE Cass City, Mich.      Phone 872-2967			

**BAD AXE THEATRE**  
WED.-TUES. APR. 10-16  
ONE WEEK  
SHOWS 7:00-9:00  
**WALT DISNEY PRODUCTIONS**  
**Robin Hood**  
TECHNICOLOR®  
©1973 Walt Disney Productions

# Cass City Bowling Leagues

**SUNDAY NIGHT MIXED**  
April 7, 1974

Gutter Dusters 18 1/2  
Big J's 18  
Yellowjackets 17  
Mix Up's 17  
Channellmasters 13 1/2  
D.J.'s 11  
Dead Beats 11  
Pintippers 6

High Women's Games: N. Anderson 169, M. Frederick 168, J. Lapp 164.  
High Women's Series: J. Lapp 468, N. Anderson 458, M. Frederick 439.  
High Men's Games: K. Crawford 207, A. Zimmerman 196, T. Furness 192.  
High Men's Series: T. Furness 550, A. Zimmerman 527, K. Crawford 526.  
High Team Game: Gutter Dusters 563.  
High Team Series: Gutter Dusters 1898.  
Splits Converted: S. McCrumb 4-5, M. Frederick 5-10, N. Anderson 3-10, O. Crawford 5-6, J. Deering 3-10, C. Furness 4-7-9, D. Randall 5-6, J. Lapp 4-5-7.

**E. Buehrly 456**  
High Individual Games: P. Little 201-163-152, M. Kerbyson 189, B. Schott 189, N. Bauer 185-156-153, M. LaPeer 184-155, N. Wallace 184-171-151, M. Guild 171-164, I. Schweikart 168-158, E. Buehrly 166-152, Pat McIntosh 166, V. Kilbourn 164, J. LaRoche 163, M. Zdrojewski 162, N. Helwig 160, P. Johnson 159, J. Smithson 156, D. Taylor 155, B. Deering 154-151, Phyllis McIntosh 154, G. Tomi 151.  
Splits Converted: P. Johnson 5-6, C. Kraeger 2-4-10, J. LaRoche 5-7, Pat McIntosh 5-7, K. Rutkowski 3-10, D. Taylor 3-10.

**CITY LEAGUE**  
April 1, 1971

**MONDAY NIGHT TRIO**  
April 8, 1971

Ten Pins 12  
Warren Electric 10  
Gadabouts 9  
Newcomers 9  
Dreamers 8  
Blank Electronics 7  
Bar Hoppers 7  
Referees 4

**MERCHANTS "A" LEAGUE**  
April 3, 1971

Kritzmans 19  
Croft-Clara Lumber 18  
J.P. Burroughs 17  
New England Life 17  
Fuelgas 15  
Erla Food Center 13 1/2  
Bigelow Nuts & Bolts 7  
Village Service Center 5 1/2

High Team Series: Warren Electric 1270, Referees 1215.  
High Team Games: Bar Hoppers 460, Warren Electric 444.  
High Individual Series: N. Anderson 433, C. Teets 456, S. Reynolds 420.  
High Individual Games: N. Anderson 175-175, C. Teets 158-171, S. Reynolds 152-180.  
Splits Converted: M. Nicol 4-5-7, S. Wooliver 6-7-10, L. Holcomb 2-7, M.L. Bergman 4-5.

**MERCHANTS "B" LEAGUE**  
April 3, 1971

Schneeberger TV 19  
Tuckey Block 16  
Croft-Clara Lumber 16  
Wesley Quaker Maid 14  
Winter's Truck Sales 13  
Clare's Sunoco Service 13  
Veronica's Restaurant 12  
Rabideau Motor Sales 9

**MERCHANTS LEAGUE**  
April 1, 1971

Kritzmans 15  
Walbro 14 1/2  
Cass City Lanes 14  
Richard's TV 13  
Herron Builders 13  
Albee Hardware 12  
Cole Carbide 11 1/2  
Clare's Sunoco 3

**500 Series: H. Copeland 583, B. Thompson 539, N. Willy 528, L. Taylor 521, C. Vandiver 511, D. Ouvry 509, R. Ouvry 507.**  
200 Games: H. Copeland 213, B. Bartle 200.

**LADIES CITY LEAGUE**  
Pat's Beauty Salon 34 1/2  
Johnson Plumberettes 34  
Gambles 30  
WKYO 27  
Sandy's "Beauties" 26  
Woods Research Co. 22  
Deering Packing 18  
General Cable 16 1/2

**CASS CITY**  
STARTS THURSDAY (4 Days)  
SPECIAL EASTER DOUBLE!  
ADULTS \$1.50 Children 50¢  
SHOWTIME:  
"CRUDE" 7:30 & 11:25  
"CARATS" 9:20

1913... a good year for oil companies, a bad year for wildcatters, and even worse for women.

GEORGE C. SCOTT  
FAYE DUNAWAY  
JOHN MILLS  
JACK PALANCE

OKLAHOMA CRUDE

2nd Comedy Hit!  
HE WAS 22 AND SHE WAS 40  
"A delightful comedy romance  
Go see it!" "Boy, is it fun!"

Liv Ullmann  
Edward Albert  
Gene Kelly

FRANKOVICH PRODUCTION  
40 Carats

**OUT THE PLACE TO SAVE IS MUTUAL SAVINGS**

THE WORD IS OUT

**PASSBOOK SAVINGS**  
**5 1/4 %**  
Compounded Daily, Earnings Paid Quarterly. Annual Yield 5.39%. No Minimum Balance. Withdraw Anytime. Add Anytime. All Funds in by the 10th of the Month Earn from the 1st of that Month.  
(Effective October 1, 1973)

**CERTI-BOOK SAVINGS**  
**5 3/4 %**  
Earnings Paid and Compounded Quarterly. Annual Yield 5.88%. Minimum Balance \$1000.00 with Additions or Withdrawals in Multiples of \$100.00 or More. Withdrawals Anytime or on 90 Days Written Notice. Earnings Then Paid to Date of Withdrawal.

OPEN  
9:00 A. M. - 3:00 P. M. MON.-THURS.  
9:00 A. M. - 5:00 P. M. FRI. - 9:00 A. M. - NOON SAT.

**MUTUAL SAVINGS**  
6459 Main St. Cass City, Mich.  
Phone 872-2105

**THURSDAY NIGHT TRIO**

Draves Dist. 19 1/2  
Francis Builders 17  
Van Dale 14  
Smith 12  
Nemeth 11 1/2  
Carpenter 9  
Essenmacher 7  
Cottick Radiator 6

High Team Series: Van Dale 1547, Cottick Radiator 1528.  
High Team Games: Van Dale 568, Cottick Radiator 541.

**Deford**

Mrs. Nellie Mathews had as guests for pre-Easter dinner Sunday Mr. and Mrs. William Mathews and family of Clio, Mr. and Mrs. Kenneth Mathews of Lapeer and Harriet Holloway and Charlie Schedawin, both of Sault Ste. Marie. Mrs. George Iverson of Detroit, who spent the week end with Mrs. Mathews, was also a dinner guest.

**Built like the BIG ONES!**  
8, 10, 12, 14, 16 hp models.

Yard care is fun again! Case compacts offer the same precision engineering, performance, durability and service as big Case farm and construction tractors. There's plenty of guts and power to mow 34 to 48 inches wide - rototill big gardens - blow snow from long drives. Exclusive Case Cushion-Control hydraulic drive!

TEST DRIVE ONE TODAY — Just for the FUN of it!  
**RABIDEAU MOTOR'S, INC.**  
6080 Cass City Road  
Cass City, Michigan 48726

**STRAND**  
CARO MICHIGAN PHONE CO. 3-9933

Wednesday thru Tuesday Apr. 10-16  
CONTINUOUS SUNDAY FROM 3:00  
PLEASE NOTE: Not shown on Thursday, April 11 due to the Rotary Travel Series show.

Pass the warning  
JULIE CHRISTIE DONALD SUTHERLAND  
"DON'T LOOK NOW"  
A PSYCHIC THRILLER

YOU ALWAYS SEE THE REAL BIG ONES AT THE STRAND...SEE THESE COMING UP SOON!

**Eastwood Magnum Force**  
THE WAY WE WERE

Where were you in '62?  
**American Graffiti**

Others Get Quick Results With The Chronicle's Classified Ads —  
You Will Too!

Phone: Caro 673-2722  
**CARO DRIVE-IN THEATRE**

Wed.-Thurs.-Fri.-Sat. Apr. 10-13  
PLEASE NOTE: NO ONE UNDER 18 YEARS OF AGE WILL BE ADMITTED TO SEE THIS PROGRAM.....

**THE COMEDY SHOW OF THE YEAR!**  
COME AND HUDDLE WITH THE CHEERLEADERS  
**THE CHEERLEADERS**  
AND "We're a new breed of cat, baby!"  
ADULTS ONLY NO ONE UNDER 18 ADMITTED  
**FRIZ**  
...he's X rated and animated!

Sunday-Monday-Tuesday April 14-16  
2 SPICY HITS! RATED "R"  
**"SENTA BERGER COMES ON STRONG"**  
-PLAYBOY

WHEN WOMEN HAD TAILS  
A HILARIOUS NEW S-E-X COMEDY THAT WILL MAKE YOU ROLLING IN THE AISLES!  
STARRING SENTA BERGER AND SEVEN BAWDY CAVE MEN

Plus This ADULT Co-Hit!  
**Human Lust**  
**Animal Desires**  
**TWILIGHT PEOPLE**

It's too late to stop and think after the accident happens.

There's so little common sense today that many wonder if it is fashionable.

**Henry Block has 17 reasons why you should come to us for income tax help.**

Reason 1. We are income tax specialists. We ask the right questions. We dig for every honest deduction. We want to leave no stone unturned to make sure you pay the smallest legitimate tax.



**HENRY BLOCK**  
THE INCOME TAX PEOPLE

6440 Main St.  
Cass City  
Open 9-6  
Mon.-Sat.  
872-4490

**Anticipation mounts for bowling classic's second round**

Anticipation among Cass City bowlers is mounting for the singles, doubles and mixed doubles portion of the Cass City First Annual Bowling Classic following a greater-than-anticipated event held March 29, 30 and 31 at Cass City Lanes.

The second half of the event is set for April 20, 21 and 22 and to date, 90 entrants have registered.

Winner in the team events for men was Veronica's Restaurant, with a 3,062 pin total with handicap. Led by Captain Jim Curtis, who sparked his team to victory with a 613 series, Jim Lefler notched team high honors with a 655.

Also contributing some sparkling pin splattering were Doug Salgat with 623, Dale Curtis with 611 and Spike Curtis with a 560 series.

The team split \$200 in prize money.

Finishing just 10 pins behind the winners was the Dan's Sunoco-Miracle Grocery Wednesday night team, racking up 3,052 pins, good for

\$150 in prize money.

The Monday night league entry from Dan's Sunoco-Miracle Grocery finished third with 3,034 pins, and split \$110 in prize money.

Following close behind in fourth place was the Croft-Clara A-team with 3,019 pins, good for \$85.

Other top finishers included Evans Products of Gagetown with 3,006 pins winning \$55, Fuelgas of Cass City with 2,990 pins and \$40, and Tuckey Block with 2,963 pins and \$25.

On the distaff side, the Walbro team finished 31 pins in front of its closest competition with a 2,989 total, good for \$100 in prize money.

Led by Donna Wischmeyer with a team high of 665, other scores included Joann Morell with 615, Norma Wallace, team captain, with 567, Phyllis Little with 564 and Belva Schott with 588.

Finishing second was Sandy's Beauties with a 2968 score, good for \$40 in prize money.

Third place finisher was

Kritzman's with a 2931 score, good for \$25.

Amie Ouvry, one of the organizers of the classic, said the response was far greater than they expected when he, Elyvn Helwig, Archie McLachlan, Fred Martin and Dick Wallace set out to develop the event.

"We really intended to make this thing go," Ouvry commented. "The fact that we had 34 teams in the event was far and away more than we ever expected."

Prize money totaled \$830, \$665 for the men and \$165 for the women.

With this initial success behind them, planners look for interesting singles and doubles competition next week.

Already looking at next year, Ouvry said the goal is to have 100 per cent participation of all Cass City teams in the event next year. He said he would like to see the leagues in town sponsor the teams in 1975 instead of having each participant pay a

\$5 entry fee.

He added that it is hoped that trophies can be awarded in next year's competition. Prize money for this year's winners is expected to be paid by the end of April, Ouvry said.

He said participation by women in the event should be greater next year, due to scheduling. Many area women's teams had already committed themselves to bowl in the Thumb Area tournament—and could not come up with free time or entry fees for the Cass City Classic.

Next year, however, sponsors hope this can be changed.

Ouvry said he and the rest of the organizers were pleased with the way this year's tournament went.

"When we first tried to get this thing going, they told us it would never work," Ouvry said. "They said we wouldn't get enough people interested in it. But I think the turnout proved them wrong."



TOP MEN'S team in the recent Cass City Bowling Classic was Veronica's Restaurant. Team members are, from the left, Douglas Salgat, Dale Curtis Sr., Jim Lefler, Jim Curtis and Spike Curtis.



THIS DISTAFF team from Walbro captured women's team honors in the Cass City Bowling Classic. Shown are, from the left, Donna Wischmeyer, Belva Schott, Phyllis Little, Joanne Morell and Norma Wallace.

**Set MSU Thumb survey**

About 7,500 residents of Huron, Sanilac and Tuscola counties are being asked by Michigan State University to express their views on local community development and services.

Selected at random by university researchers, those Thumb Area residents requested to participate in the survey will receive mailed questionnaires this month.

The questionnaires will deal with two related surveys — one emphasizing community development and the other community services. Sponsored by the Thumb Area Human Development Commission and MSU, in cooperation with the Cooperative Extension Service and county officials in the three counties, the project will be coordinated by Dr. Raymond Vlasin, chairman of MSU's Department of Resource Development. He will be assisted by graduate students Alan Kirk and Fritz Sauer.

The community development survey is concerned with residents' opinions about future growth and development. It will focus on such issues as population growth, industrial and residential development, and land use planning and controls.

The community services questionnaire is designed to find out whether residents feel the community's public, private and charitable services are meeting the needs of its citizens. It will solicit citizen evaluation of services provided in the areas of education, health, recreation, public works and a number of similar categories.

Information gained from the study will be provided to community groups and civic leaders as a potential basis for improving community services and community development efforts to better meet citizen needs.

MSU researchers believe the success of the project will depend on the cooperation received from Thumb Area residents in filling out the

questionnaire forms they receive in the mail. They feel a strong response will provide

information that will prove useful to local communities for many years.

**FARM MACHINERY AUCTION**  
Saturday, April 13

AT 12:30 P.M.

Located 4 miles East, 1 mile North and 1/4 mile East of Unionville or 1 mile South and 1 1/2 miles West of Bach on Huron Line Road.

- |   |  |
|---|--|
| <p><b>TRACTOR &amp; MACHINERY</b></p> <ul style="list-style-type: none"> <li>Farmall Super H tractor, WF, excellent condition</li> <li>John Deere '60' tractor, good shape, narrow front</li> <li>John Deere 3-14 mtd. plow</li> <li>John Deere '40' tractor, WF, good running condition</li> <li>John Deere VanBrunt grain drill, 13 hole</li> <li>John Deere tractor spreader</li> <li>John Deere '66' beef &amp; bean planter</li> <li>John Deere heavy duty loader w/stone fork</li> <li>Two John Deere farm wagons, w/grain tight boxes</li> <li>John Deere 3 section rotary hoe</li> <li>John Deere 10 ft. spring tooth harrow</li> <li>John Deere 4 row cultivator and bean puller</li> <li>John Deere 9 ft. double disc</li> <li>John Deere '900' field cultivator, coil leg</li> <li>Brillion 9 ft. cultipacker</li> <li>John Deere 3 section 9 ft. spring tooth harrow</li> <li>John Deere 4 bar integral rake</li> <li>John Deere '216' trailer plow</li> <li>John Deere 2 row corn cultivator</li> <li>John Deere 7 ft. mower, semi-mtd.</li> <li>Buzz rig</li> <li>Hay loader</li> <li>Scalding kettle &amp; jacket</li> <li>Two stock tanks</li> <li>Fuel oil tank</li> <li>Two wheel trailer</li> <li>Cement mixer</li> <li>International corn binder</li> <li>Platform scale</li> <li>Land leveler, 10 ft.</li> <li>Clipper fanning mill</li> <li>Quantity of rough lumber, new</li> <li>Quantity of chicken equipment, nests, wire</li> <li>Portable compressor</li> <li>Quantity of steel fence-posts</li> <li>Grain elevator, 18 ft.</li> <li>Chain fall, 1/2 ton</li> <li>Quantity of 30 weight oil</li> <li>Table saw</li> </ul> | <p><b>TRUCK, CAR &amp; HOUSE TRAILER</b></p> <ul style="list-style-type: none"> <li>1946 Chevrolet truck, dump box</li> <li>1966 Dodge Fordor sedan</li> <li>1965 98 Olds Fordor sedan, good running condition</li> <li>House trailer, 36x8 ft.</li> <li>1961 Ford 6 cylinder, motor and trans.</li> </ul>   |
| <p><b>ANTIQUES</b></p> <ul style="list-style-type: none"> <li>Hand seed cleaner (bean picker)</li> <li>Walking plow</li> <li>Beet lifter</li> <li>Cream separator</li> <li>Shovel plow</li> <li>Sausage press</li> <li>Weeder wooden wash tubs</li> <li>Several milk cans</li> <li>Dishes, fruit jars</li> <li>Chairs</li> <li>Kitchen cabinet</li> <li>Good wine barrel</li> <li>Chest</li> <li>Hand corn sheller</li> </ul>   | <p><b>HOUSEHOLD</b></p> <ul style="list-style-type: none"> <li>Wizard upright freezer</li> <li>Maytag wringer washer</li> <li>Several tables w/chairs</li> <li>Duo Therm space heater, new</li> <li>Two kitchen ranges, gas</li> <li>Several chests of drawers</li> <li>Crib &amp; high chair</li> <li>Buffet &amp; china cabinet</li> <li>3 steel beds, mattresses, &amp; springs</li> <li>Quantity of dishes and cooking utensils</li> <li>Several large pictures</li> <li>Lawn mower</li> <li>Planet Jr. garden planter</li> <li>Silvertone radio-phonograph</li> <li>Hollywood bed</li> <li>Oak chest &amp; dresser</li> <li>Steel wardrobe</li> </ul> |

**BOAT**  
14 ft. boat 3/trailer w/Evinrude 18 motor

25 cords of firewood  
Quantity of logging equipment  
Large quantity of antique furniture and dishes

TERMS: Contact bank clerk prior to sale date for credit arrangements.

The Farmers & Merchants Bank of Sebawaing, Clerk

**ALFRED FRITZ, Owner**

BOYD TAIT, AUCTIONEER Ph. Care 673-3525 For Auction Data

**SAVE AT CROFT-CLARA**

3/8" X 4 X 8  
GOTHIC OAK  
**PRE-FINISHED PANEL \$14.95**

3/8" X 4 X 8  
**MEDITERRANEAN PANEL \$14.95**

Interior **LATEX PAINT** LOW AS **\$5.39 GAL.**

Ceiling **TILE** LOW AS **10c SQ. FT.**

Complete Line **OLYMPIC HOUSE STAINS** QUARTS **\$2.95** GALLONS **\$7.75**

**PRE-FINISHED PLYWOOD** **\$3.99**

OVER 40 KINDS PRE-FINISHED PLYWOOD IN STOCK

**CROFT-CLARA LUMBER, INC.**  
PHONE 872-2141  
CASS CITY

SIMULATED ENGRAVED BUSINESS CARDS AVAILABLE 1-COLOR OR 2-COLOR  
The Chronicle



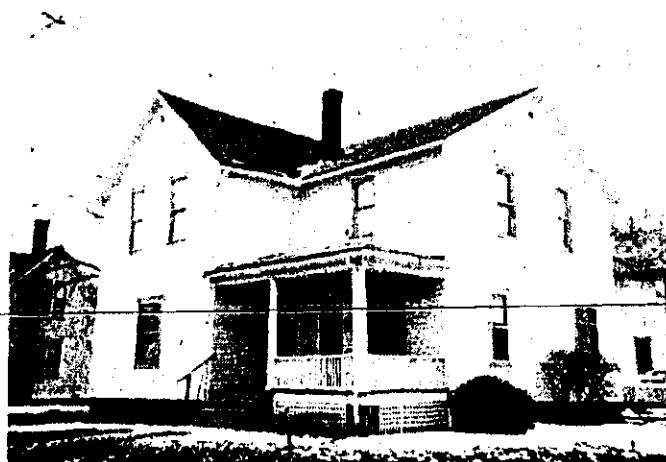
# 'FOR LAND SALES'



Brick home, has new roof, new oil furnace, new hot water heater plus many other added attractions. Has a small barn, silo and an acre of land. \$9500. Cash or terms. Plus additional land at \$650. per acre.



This 3 bedroom home is completely furnished and is located on E. Irwin St. in Bad Axe. This house is also rented and is a very good investment for continued rental or as an inexpensive home. Priced to sell at \$16,000. with \$2000. down and \$140. month.



This 2 family apt. is located on a corner lot in Bad Axe, has a good history of responsible renters and is tops in tax deductions. Priced to sell at \$18,500. with \$3500. down and \$150. month. Why not invest \$3500. and let the rent pay for the house?



This lovely 40 acres is all cropland, 3-4 bedroom home, large barn in good condition plus other buildings. A square corner 40 acres, school bus to excellent schools. \$37,500. Cash or terms. Or will divide!



4 bedrooms, 2 baths, new roof, corner lot, hot water heat, 2 blocks to school, 2 blocks to stores, immediate possession, priced for cash sale, terms available, shown by appointment anytime. \$20,000.

**JUST NEW ON OUR LIST**

Beautiful home, approximately 8 years old, on main highway, yet secluded in exquisite grove of tall stately trees. This home has everything a selective buyer would appreciate. Natural gas, fireplace, privacy, big 2 car garage etc. Full price for quick sale \$35,000. Shown by appointment only.



This 20 acre parcel with older house and barn is located near Argyle and near large State Game hunting area. There is an exceptional amount of good road frontage with this parcel. Priced for Quick sale at \$16,000. with \$2000. down and \$110. monthly at 8% int.

**SAVE THIS AD & SHOW IT TO YOUR FRIENDS!**

**THE FOLLOWING PROPERTIES ARE OFFERED BY McCORMICK REALTY INC., 6491 MAIN STREET, CASS CITY, MICHIGAN 48726. THERE ARE NO OTHER CHARGES OF ANY KIND, ALL CONTRACTS ARE AT 8 PER CENT AND ABSTRACTS OR TITLE INSURANCE WILL BE FURNISHED WHEN PAID.**



This beautiful fast flowing spring fed fishing stream is an ideal spot for year around recreation or home site. The stream runs along side and crosses this 14.68 acre parcel. \$12,500. with \$2500. down & \$100. month.

- No. 1-14.68 acres, fast flowing fishing stream, Spring fed & wooded \$12,500. \$ 2,500. dn. & \$100. Mo.
- No. 2-11.61 acres, adjoining above parcel, wooded & stream crosses \$ 8,500. \$ 1,000. dn. & \$ 75. Mo.
- No. 3-31 acres on East Shabbona road, all wooded, nice trees, good inv. \$15,000. \$ 2,500. dn. & \$125. Mo.
- No. 4-10 acres good cropland, buy now & get a share of the crop \$18,000. \$ 3,000. dn. & \$135. Mo.
- No. 5-44 acres good cropland, big barn, Bad Axe School district \$20,000. \$ 3,000. dn. & \$135. Mo.
- No. 6-10 acres, good house, excellent barn, Cass City School district \$37,500. \$ 9,500. dn. & \$235. Mo.
- No. 7-20 acres, 3 bedroom house, big barn, lots road frontage \$16,000. \$ 2,500. dn. & \$110. Mo.
- No. 8-35 acres, no buildings, 30 acres cropland, 5 acres woods \$15,000. \$ 2,500. dn. & \$125. Mo.
- No. 9-34 acres, no buildings, all cropland & tiled, good soil \$20,000. \$ 3,000. dn. & \$135. Mo.
- No. 10-12 acres, Crane Rd. West of Cass City, excellent clay loam \$12,000. \$ 2,000. dn. & \$100. Mo.
- No. 11-8 acres, Crane Rd. excellent level clay loam cropland \$ 8,000. \$ 1,000. dn. & \$ 75. Mo.
- No. 12-10 acres, square, 2 1/2 miles Cass City, blacktop road good inv. \$16,000. \$ 5,000. dn. & \$100. Mo.
- No. 14-11 acres, one mile off M-53 in Bad Axe School District \$ 6,500. \$ 1,000. dn. & \$ 75. Mo.
- No. 15-20 acres, frontage 2 roads, all plowed & ready for crops \$12,500. \$ 2,500. dn. & \$100. Mo.
- No. 16-Approx. 12 acres on Ritter Rd. 358' frtge. Cass River \$ 8,000. \$ 500. dn. & \$ 60. Mo.
- No. 17-10 acres on Argyle Rd. 3/4 mile off M-53 (NICE) \$ 8,000. \$ 500. dn. & \$ 75. Mo.
- No. 18-10+ acres, all wooded, on East Shabbona Road, reasonable at \$ 6,500. \$ 750. dn. & \$ 75. Mo.
- No. 19-Square 10 acres on Leslie Rd. all cropland and good soil \$ 6,500. \$ 750. dn. & \$ 75. Mo.
- No. 20-Square 10 acres on Pringle Rd., Cass City School District \$ 7,500. \$ 750. dn. & \$ 75. Mo.
- No. 21-13 acres, recreation land & home site, wooded & pleasant \$ 6,500. \$ 500. dn. & \$ 75. Mo.
- No. 22-10 acres, on Pringle Rd. about 1/2 woods, nice parcel \$ 6,500. \$ 650. dn. & \$ 75. Mo.
- No. 23-10+ acres, Shabbona Rd., nice trees, Cass City School District \$ 6,500. \$ 750. dn. & \$ 75. Mo.
- No. 24-10 acres, all cropland, 1/2 tiled, Cass City School District, Pringle Rd. \$ 7,500. \$ 750. dn. & \$ 75. Mo.
- No. 25-5 acres, square corner parcel, tiled, 2 miles off M-53 \$ 5,500. \$ 500. dn. & \$ 75. Mo.
- No. 26-5 acre parcel, square, good gravel road, good land too \$ 5,000. \$ 500. dn. & \$ 75. Mo.
- No. 27-10 acres, all woods, quiet & peaceful country road, Good hunting too \$ 6,500. \$ 750. dn. & \$ 75. Mo.
- No. 28-10 acres, Pringle Rd., 1/2 tiled, good cropland, nice location \$ 7,500. \$ 750. dn. & \$ 75. Mo.
- No. 29-885 Ft. frontage on M-53, 660 ft. deep, 660 ft. frontage N.B. Cass River, ideal for any purpose, Excellent Camp Site etc. \$20,000. \$ 5,000. dn. & \$150. Mo.
- No. 30-255 ft. frontage on M-53, 660 ft. deep, choice high ground \$ 5,500. \$ 500. dn. & \$ 75. Mo.
- No. 31-In Cass City, 2 family apt. always rented, good investment \$12,000. \$ 2,000. dn. & \$100. Mo.
- No. 32-In Bad Axe, 2 fam. apt. Excellent inv. Choice location, priced to sell \$18,000. \$ 2,000. dn. & \$150. Mo.
- No. 33-In Bad Axe, 3 bedroom furnished home, good condition, good location \$16,000. \$ 2,000. dn. & \$140. Mo.
- No. 34-In Bad Axe, 3-1 bedroom older home in good condition, good location \$16,000. \$ 2,000. dn. & \$140. Mo.
- No. 35-In Cass City, 4 bedrooms, 2 baths, hot water heat, nat. gas, garage \$20,000. \$ 2,500. dn. & \$150. Mo.
- No. 36-1 mile from Cass City, large trailer & 1 acre on Cass River \$ 9,500. \$ 2,500. dn. & \$100. Mo.
- No. 37-Beautiful two bedroom home, mint condition, big wood lot, nat. gas \$35,000. \$10,000. dn. & \$200. Mo.
- No. 38-Small home in Shabbona, kitchen, living room, utility room, & 1 bedroom \$ 8,500. \$ 2,500. dn. & \$ 75. Mo.
- No. 39-20 wooded acres, nice trees, choice of 30 acres, good inv. \$11,500. \$ 1,500. dn. & \$125. Mo.
- No. 40-20 acres cropland, 1/2 tiled, good land, choice of 40 acres \$15,000. \$ 1,500. dn. & \$150. Mo.



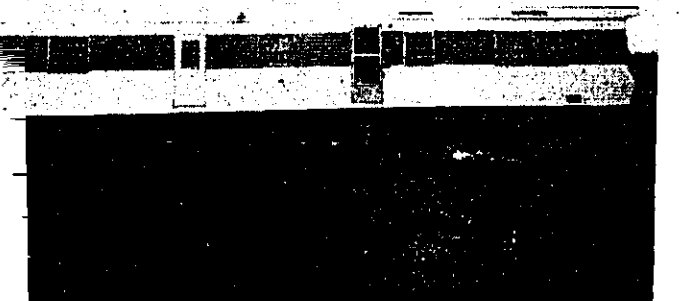
This 3 bedroom home is located on North Port Crescent Street in Bad Axe, is presently rented to good tenants. Good reasonable home or for investment. Priced to sell at \$16,000. with \$2000. down and \$140. month.



This 2 family apartment has new gas furnace, new roof and is an excellent investment. If you are looking for some tax free income, this is it! \$12,000. with \$2000. down and \$100. month.



2 house trailers, 1 acre of land. Rent one, live in other or rent both. Excellent investment. \$11,500. with \$2500. down and \$75. month.



This big trailer on acre lot on Cass River. New well and septic system. \$9500. with \$2500. down and \$100. month.



This comfortable little doll house has spacious rooms, big kitchen, living room, one bedroom, large bath & utility room. Very pleasant summer home for those who winter in Florida. Extra large shaded country lot. Also ideal for year around economical living. \$8500. with \$2500. down & \$65. month.

**WANTED LISTINGS--ANY PROPERTY--IMMEDIATELY!!!!**

Country homes, any condition, farms, recreation land, any size, city homes and lots.

**A SPECIAL MESSAGE TO OUR CUSTOMERS**

THESE ARE PRECARIOUS TIMES!

One year ago I wrote in this space that neither you nor I had seen anything yet as far as inflation was concerned!

In the fall of last year I wrote of the asinine "Land Sales Act" that was going into effect on Oct. 1, 1973. After a short trial period that law has been amended.

I don't dare write what I am thinking now because John Haire wouldn't print it anyway. So just be prepared for more taxes and inflation!

JOHN V. McCORMICK, Broker

**McCORMICK REALTY INC.**

6491 MAIN ST.  
CASS CITY, MI 48726  
CALL ANYTIME: 517-272-2712

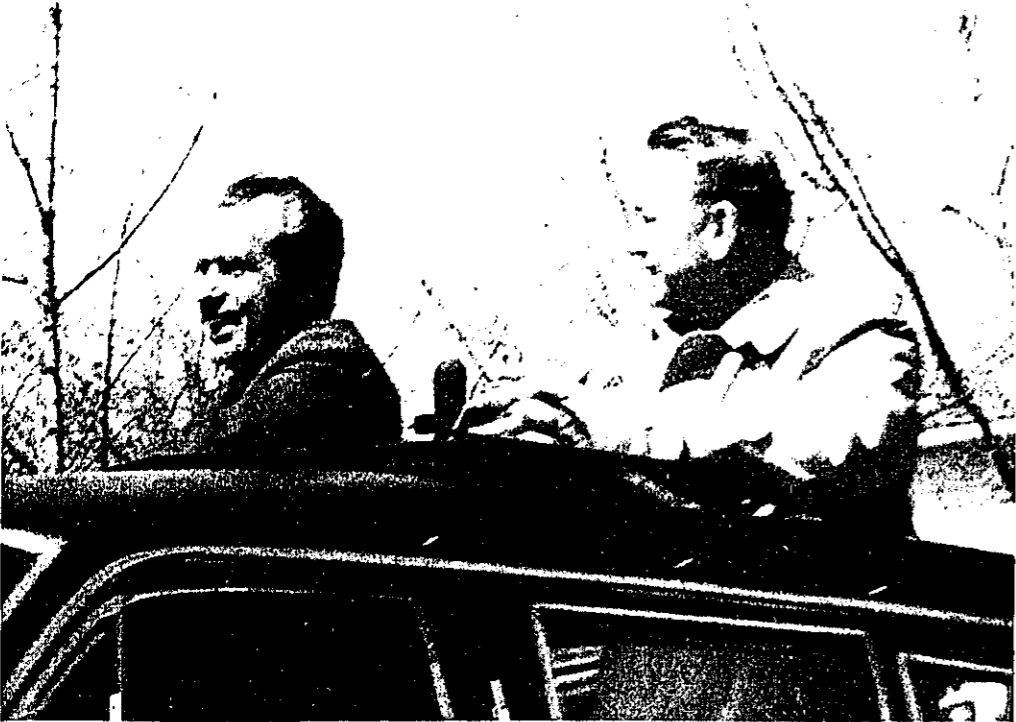




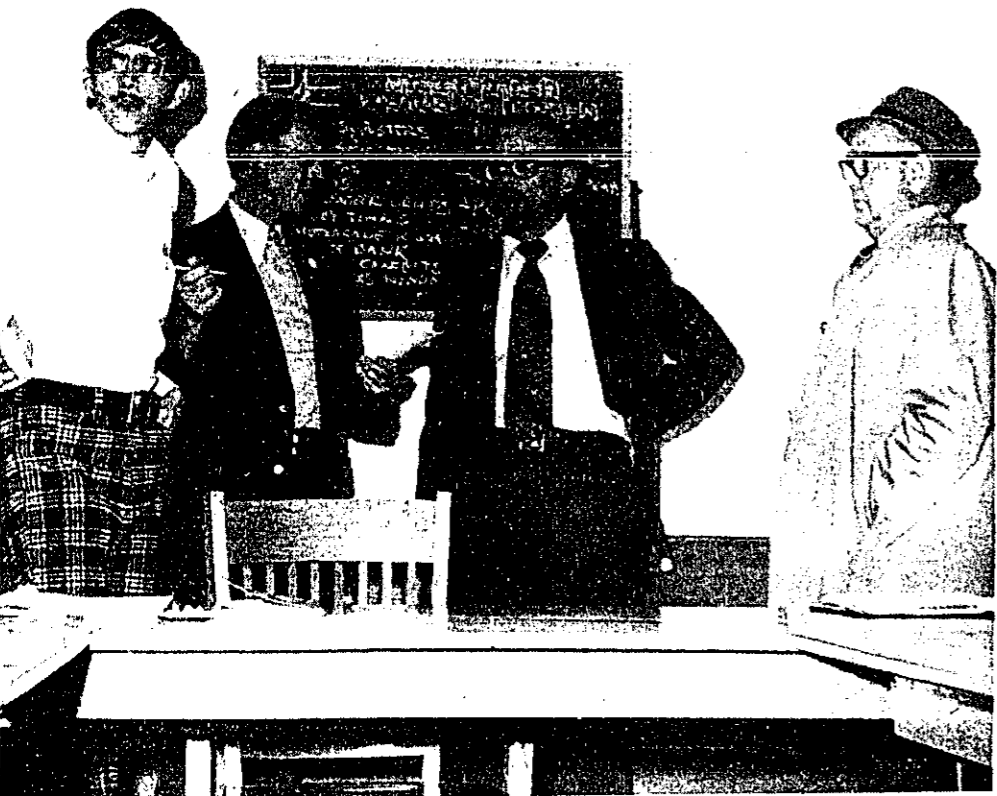
# President's visit galvanizes community into action



EVERY DETAIL was mapped in advance at a meeting at the fire hall Sunday under the direction of an advance man from Washington (standing).



PRESIDENT NIXON, accompanied by Republican congressional candidate James Sparling, smiles warmly to well-wishers as he motorcades through Cass City Wednesday. Nixon was stumping for Sparling's election.



A SPECIAL MEETING Sunday helped get in motion plans for the president's visit. Talking over details are, from left: Bill Bliss, co-ordinator; Jim Sparling, Caro; Lambert Althaver, village president, and Maynard McConkey, Tuscola county commissioner.



THE GIANT SIGN placed at the corner of Main and Seeger was built by volunteers Tuesday.



SPRAY-PAINTED signs dotted the community, the work of many students.



TIGHT SECURITY - a secret service man waxes the top of a barrel of water to make sure that it was tamper proof. The barrels were used for crowd control on Main and Seeger Streets.



THESE STUDENTS work diligently to prepare signs to welcome President Nixon.

The announcement Friday that President Richard Milhous Nixon would visit galvanized Cass City and the Thumb into a fever of activities to prepare for the arrival of the chief executive.

In Bad Axe, Sandusky, Cass City and all along the motorcade route citizens hurried with assigned tasks designed to make the president's visit a pleasant and memorable occasion.

Besides the principal communities in the route, other smaller communities were planning a welcome for the first president ever to visit in the Thumb.

Authorities at Wilmot announced plans to have the Kingston High School Band present and to decorate the community.

In Cass City the air was almost festive this week as big city reporters, network television personnel and radio men flocked to the area to prepare for the visit.

Guided by an advance man for the motorcade the entire Cass City community leaped willingly to assigned tasks to leave no stone unturned to make the visit as prestigious as possible.

Cub Scouts, Little Leaguers, Boy Scouts, and other groups were alerted by Councilman Jim Ware who was in charge of seeing that these groups were on the street to see Mr. Nixon.

Many of the details were ironed out in two planning sessions with various chairmen and the motorcade representative. Co-ordinator of this campaign was councilman William Bliss.

Signs and posters that dotted the buildings and route of the motorcade were arranged under the direction of Lynn Albee and Elkland Supervisor Ed Karr. Banners for streets was the responsibility of Albee and Mrs. Dorothy Stahlbaum, Chamber of Commerce president.

Robert Walpole helped organize signs on the roads outside of the community while Commissioner Maynard McConkey coordinated plans with other communities. Handbills were created under the direction of Tom Proctor while Ed Bergman furnished the sound truck.

Mrs. Geraldine Prieskorn supervised the building of the 10x36-foot sign at the corner of Main and Seeger. Vic Guernsey was placed in charge of establishing a phone bank. Ten special phones for reporters were installed at L & S Sports Center.

### MANY BANDS

Bands from every school district in Tuscola county except Kingston were in Cass City. The arrangements were made by Donald Crouse, George Bushong, Gary Christner and Dick Wallace.

Crouse was also in charge of alerting various schools about the president's visit and announced that 41 school buses were expected Wednesday.

### ELABORATE SECURITY

Agents for the United States Treasury department arrived in Cass City Friday to arrange for the president's safety during his visit.

A command post with eight radio circuits was established at the top of the Michigan Bean Co. silo. It connects with walkie talkie units of various police units at the parade site.

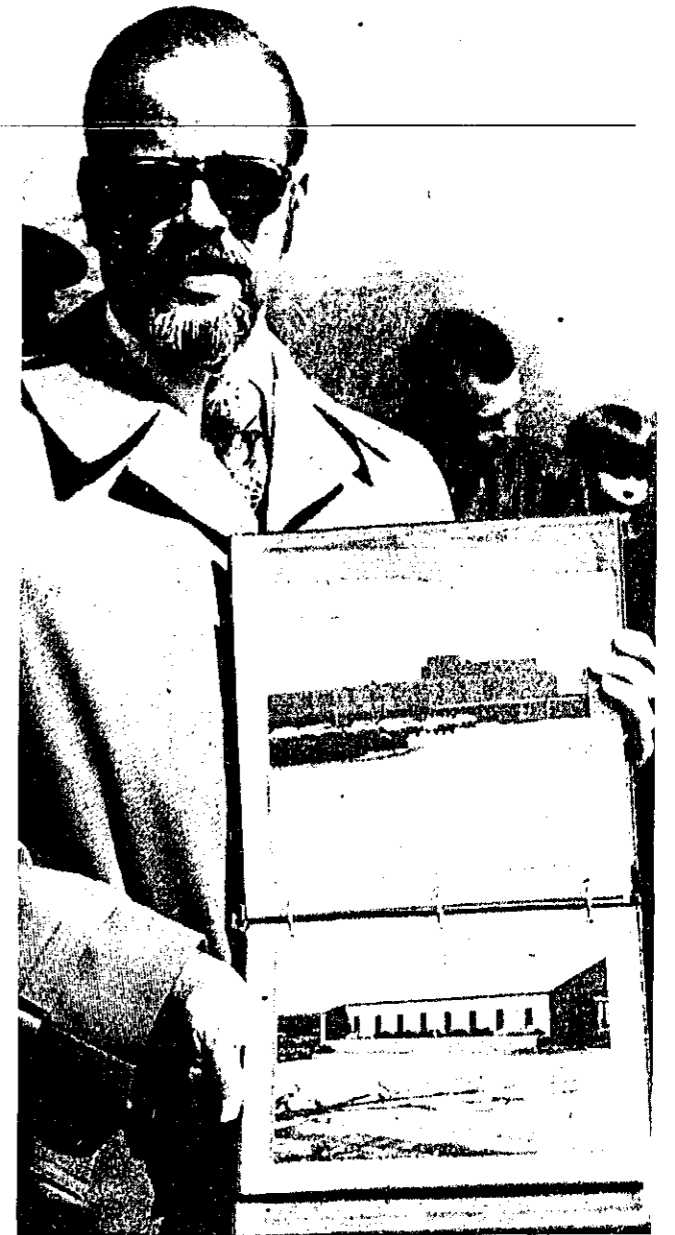
Police Chief Gene Wilson estimated that there would be

a minimum of 175 law enforcement officials in the village all under the direction of the Secret Service.

These security people have been busy in the community for several days. They checked all upstairs buildings facing Main street and requested that windows be kept closed during the president's visit.

Cars used in the parade were given careful checks and even the items used for barricading the streets were examined closely by agents.

Chief Wilson said that a couple of miles of rope was needed to rope off Main and Seeger Streets. Main Street was blocked off at 6 a.m. Wednesday in anticipation of the President's noon arrival.



VILLAGE PRESIDENT Lambert Althaver displays the photo album he presented to President Nixon on his visit to Cass City. The pictures were gathered under the direction of Dr. D. E. Rawson, who made a special trip to Detroit to have the engraved cover ready for the presentation.



CARO HONORED the president with a ceramic egg created by Gladys Galloway, Caro. It was presented by Max Lawrence, Caro village president.

## Vote set Tuesday

Continued from page one

University, graduating with a political Science degree and received his law degree at the Detroit College of Law.

Traxler served as an assistant Bay county prosecutor from 1960-62 when he was elected to the State House of Representatives.

He served as House majority floor leader from 1965-66 and chairman of the House Judiciary Committee from 1969-73. He resigned the chairmanship of the committee to run for congress, although he still retains his \$17,000 per year House seat.

During his tenure in the House, Traxler authored the Michigan State Lottery Bill and the Charitable Bingo Law. Other pieces of legislation sponsored by the Bay City Democrat include the Controlled Substances Act, Alcoholism, Treatment and Rehabilitation Bill, Revised Probate Bill and a pending Revised Criminal Code.

He has received numerous legislative awards and was named Most Effective House Member in 1966 by the Capitol

Press Corps.

Traxler is a director of the American Judicature Society and a member of the Uniform State Law Commission, The Michigan Crime Commission, Governor's Committee on Alcohol and Drug Abuse and Law Revision Committee.

Traxler is a member of Trinity Episcopal Church, Bay City.

In Huron county, Clerk Edward A. Swackhamer predicted nearly 50 per cent of the county's 14,202 registered voters will cast ballots Tuesday. He indicated an increase in the number of absentee ballot requests as well compared with the primary election.

In Sanilac county, Clerk Walter Behn said he expects between 4,500 and 5,000 of the county's 15,000 registered voters will make it to the polls Tuesday.

Behn said there is a greater interest among county voters in this election than in the primary last month. He added it is impossible to tell how many absentee ballots have been taken out because this is handled by the individual voting precincts.