

The value of what one says is not measured by the number of words used saying it.

EDITOR ENDORSES ALVIN DeGROW

(Continued from page one)

ORDER OF PUBLICATION

State of Michigan, Probate Court for the County of Tuscola. File No. 20357. Estate of John Eria, deceased. It is Ordered that on August 6, 1970, at 11 a. m., in the Probate Courtroom Caro, Michigan a hearing be held on the petition of Dan Eria, administrator w/w/a for allowance of his final account and for the appointment of a trustee. Publication and service shall be made as provided by Statute and Court Rule. Dated: June 29, 1970. C. Bates Wills, Judge of Probate. A true copy. Beatrice P. Berry, Register 7/9/3

wanting to maintain the ban against abortion have nothing going for them with either candidate. The choice for all practical purposes narrows down to who may be expected to do the best total job in Lansing. On this basis, we supported DeGrow when he was a long-shot candidate in the special election that won him his seat originally and on the same basis we support him again in the upcoming Aug. 4 primary. Both DeGrow and Somerville are successful and respected businessmen of proven capabilities. What makes DeGrow the better choice is that he has learned the ropes in the Senate and started up the seniority list so vital in being named to important committees where the influence in the Senate really is.

It's acknowledged that where a man lives has little to do with the job he can do. But it does have some effect. As a small town businessman in Pigeon, for instance, DeGrow spent years dealing with farmers and listening to their problems. It's reasonable to feel that as a member of the agriculture committee he would understand and be sympathetic to the problems of the people he spent his life working with. When he won the special election two years ago he defied the odds to become the first Senator from the Upper Thumb since it was reorganized into the 28th district in 1963. We have a local voice in Lansing after years of representation by a resident of populous St. Clair county. Let's keep him.

In accident

Chris McCullough injured

Chris McCullough, 23, of Cass City remained in "guarded" condition Tuesday at Hubbard Memorial Hospital in Bad Axe as a result of an auto accident Sunday. Miss McCullough was a passenger in a car driven by Lawrence P. Wasierski, 26, of Jackson. Wasierski was attempting to shift gears and inadvertently stepped on the brakes rather than the clutch, which threw the car into a skid. The auto ran off the road, overturned and came to rest in an area of heavy brush. The accident occurred on Thompson Road near the south limits of Bad Axe.

Two other passengers, William C. Gucwa, 26, and Angeline Polega, 19, both of Bad Axe, along with the driver and Miss McCullough, were taken to Hubbard Memorial Hospital. Only Miss McCullough was seriously hurt. A Saginaw truck driver, Patrick M. Kenney, 28, was only slightly injured last Friday when he lost control of his semi-truck and trailer 7 1/2 miles east of Cass City. Kenney told state police officers he swerved to avoid hitting a hole in the road, losing control. The vehicle then veered off the road and went into a bean field. The truck struck a

tree and the trailer overturned in the process. Alma Marie Mouton, 58, of Gagetown escaped injury Monday when she lost control of her car striking a bridge abutment and going off the road. The accident occurred on Koepgen Road near Milligan Road. She told police officers she was slowing down as she approached some railroad tracks, but struck a large hole in the road causing her to lose control. Two Cass City residents, Mary Kloc, 71, and Peter Kloc, 74, were passengers in a car driven by Frances Marie Kloc, 48, of Detroit which struck a

horse on Deckerville Road Sunday night. She told investigating officers she was driving with the car lights on dim and did not see the horse in the road in time to avoid hitting it. The horse was owned by Gary Parsell of Caro. No injuries were reported in an accident between a pickup truck and a station wagon Saturday morning in Akron. The car, driven by Lambert E. Althaver, 39, Cass City, and the truck, driven by Milford H. Gainsforth, 62, Unionville, collided at the intersection of Dickerson and Ringle Roads when Gainsforth allegedly failed to stop for a stop sign.

Brock pleads innocent

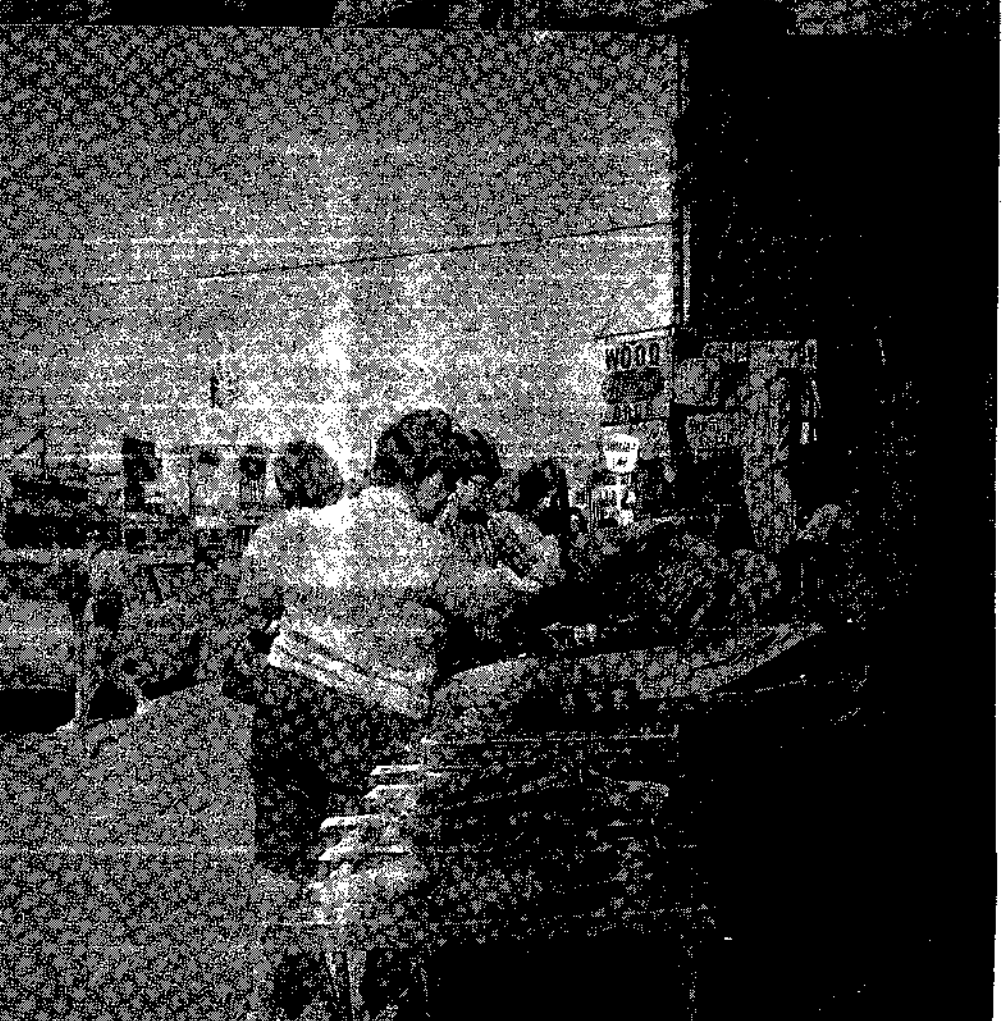
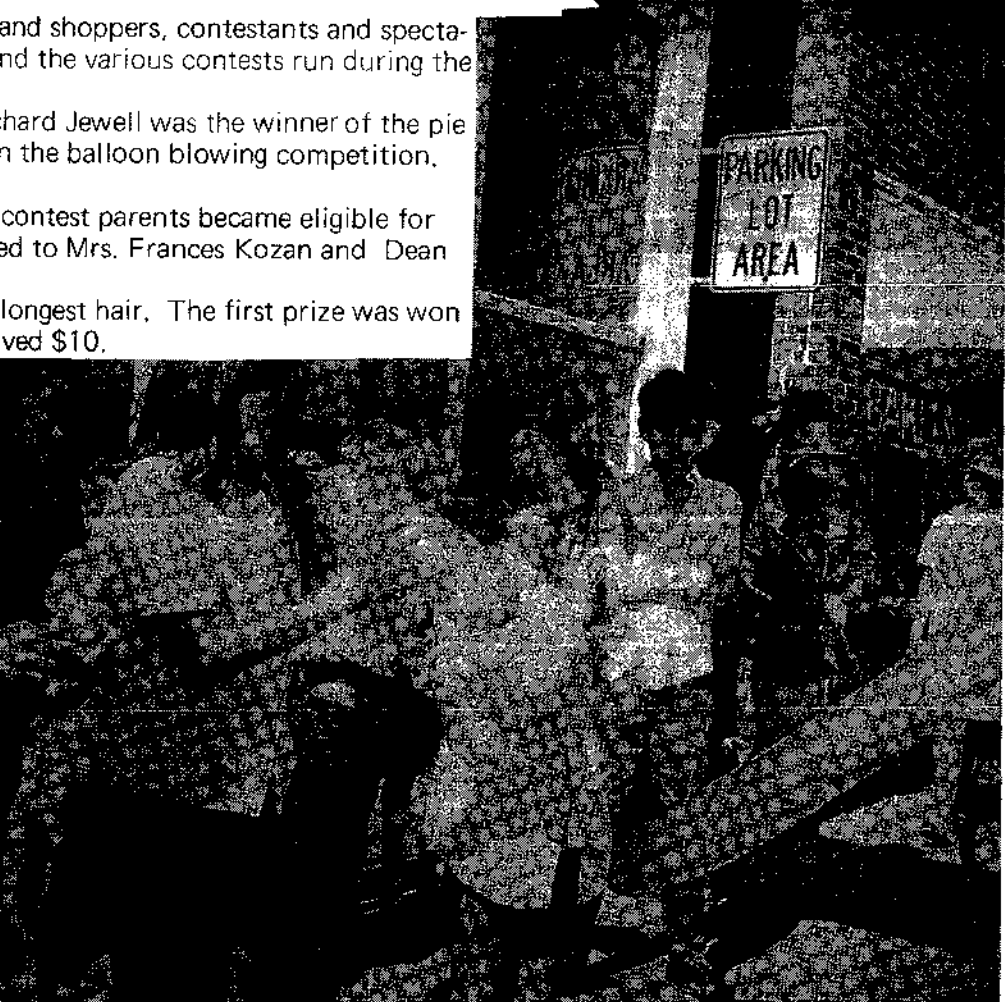
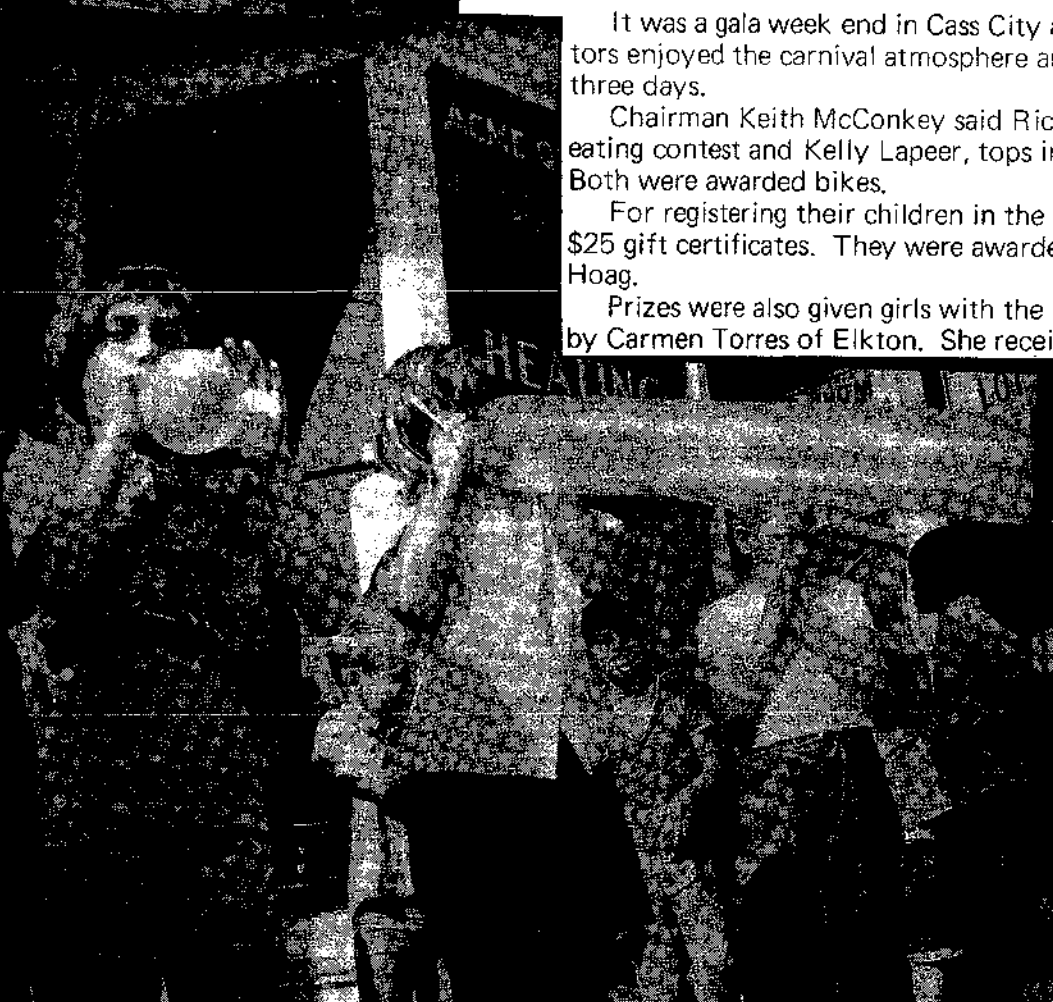
Glen Nelson Brock, 69, of Caro pleaded innocent Monday to a charge of drunk on a public street before District Court Judge Richard Kern. He was arrested July 16 in Cass City and held at the Tuscola County jail overnight. A trial date is pending. Robert Allen Murray of Allenton was found guilty of driving with license suspended or revoked by Judge Kern Monday. He was fined \$50 and ordered to pay costs of \$28. Lloyd Michael Gray, Gagetown, appeared before Judge Kern Monday on a charge of drunk and disorderly. He was ordered to pay a \$25 fine and \$25 in court costs.

Schneeberger's Grand Opening FREE GIFTS FOR ALL THE KIDS! 25 lbs. DETERGENT WITH ANY APPLIANCE

FREE MIXING BOWL With Purchase of your Stove INSTANT CREDIT TERMS LIVE CAREFREE LIVE BETTER ELECTRICALLY WITH AN ELECTRIC RANGE No-Charge Service: Edison repairs or replaces, after warranty, the electrical operating parts of Electric Ranges without charge for parts or labor.

Whirlpool—the range that talks your language... CLEANABILITY! OVEN CLEANS ITSELF Whirlpool 30" ELECTRIC RANGE Never touch a dirty oven again SELF CLEANS MODEL PVE 337 WE ARE NOT ALLOWED TO PUBLISH OUR LOW, LOW RANGE PRICES! Plus all these wanted features! Automatic Mealtimer* clock starts and stops oven cooking while you're away... Labeled oven rack guides indicate best position for single or double-rack baking... Spillguard* recessed cooktop helps contain spills and is at a more convenient work level.

OPEN ALL DAY SATURDAY. FRIDAY 'TIL 9 Schneeberger's TV APPLIANCES FURNITURE Phone: 872-2696 Cass City



SIDEWALK DAYS

It was a gala week end in Cass City and shoppers, contestants and spectators enjoyed the carnival atmosphere and the various contests run during the three days.

Chairman Keith McConkey said Richard Jewell was the winner of the pie eating contest and Kelly Lapeer, tops in the balloon blowing competition. Both were awarded bikes.

For registering their children in the contest parents became eligible for \$25 gift certificates. They were awarded to Mrs. Frances Kozan and Dean Hoag.

Prizes were also given girls with the longest hair. The first prize was won by Carmen Torres of Elkton. She received \$10.



AROUND THE FARM

Need total planning for top yields

By William L. Bortel

Every farmer has problems.. and every field he works to supply American homes and industries has problems. But he keeps plugging away to make sure we have enough to eat and supply industries...thank goodness. The key--and hope--for any future is to control and prevent as many yield-robbing problems as possible...

- Wrong hybrid or variety for a specific fertilizer-management program.
- Planting too late and incorrect number of plants.
- Wide rows that waste valuable sunlight.
- Diseases and pests at work on lush plants.
- Hidden hunger for nutrients often there but unable to get into plants.
- Lime placed wrong -- or not at all.
- Pruned roots from careless cultivation, etc.

Now--during the growing season--is the time to trouble shoot. The facts you find may not help you this year but will help you adjust for a champion year next season. Top farmers trouble shoot during summer stress.

1 - What is HIDDEN hunger, exactly? Say you Fertilize for 110 bushels of corn but Manage everything else (seed choice, planting date, etc.) for 150 bushels. You can lose 40 bushels to Hidden hunger. Top farmers prevent it by fertilizing according to soil and plant test findings--and often beyond them!

2 - Will full fertilization insure me against average yields? No, sir. Well fertilized crops sometime produce half or less of what they are capable of giving you. It can happen when you use the wrong hybrid or improper plant spacing or poor pest control or any one practice that puts hidden brakes on fertility. A good researcher carefully watches all factors when working to improve just one factor. So does a good farmer. Forty or 50 bushels per acre more is worth it. This is what trouble shooting is all about.

3 - If my soils test high in a certain nutrient, should I add more of it? Many do. Most labs label a soil "high" not because of super-high conditions, but because odds point to little response to applications of that nutrient that year. Top farmers remember the heavy appetite of some crops and the hazards of soil environment. A certain P test may be "high" for corn but "low" for potatoes.

A certain K test may be fine until soil conditions (too cool, too wet, too dry, too compacted) restrict root reaching or aeration. Potash rate can go from "high" at the start to "medium" at the end of just one season after cutting 6 tons of alfalfa hay.

4 - Why does my advisor or test lab want a complete management record? Because many things besides fertility can affect chemical composition of plant parts. Increasing stand or heavy weeds may pull down leaf nitrogen. Very dry soil for a time before sampling may cause low leaf P or K. A crop rotating after a heavy potash eater may show low plant K. Certain corn hybrids may use nutrients more efficiently than others. Short N or P may cause your field tissue test to show adequate K even when the plant does not get enough potassium for good growth. If the plant had gotten enough N or P, the K test would have shown low or very low. Many interactions occur in today's high-yield varieties getting high-yield fertilizer rates. It's a complicated picture. It demands a sharp eye on nutrient balance at all times.

5 - Some folks swear by quick tissue tests in the field. Why? Let a crop tell you what it needs on the spot and you'll understand. With a kit of test papers, chemical solutions and powders, vials, extracting pliers, and knife, the tester gets results you can see right beside the crop. He can recheck results that "don't seem right." If no NPK problems show, he and the farmer can probe further. Such tests fascinate many farmers making them better crop watchers and high-yield chasers.

6 - When is the best time to sample a plant for field tissue tests? Several times, if possi-

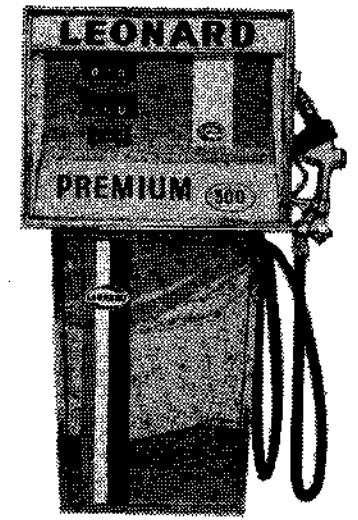
ble, test field 5 or 6 times to follow nutrient uptake through the season. If you can run only one test, do it when the plant is under greatest stress--flowering and seed-setting time in mid-season. Don't test in early morning, on cloudy days, during drought, or right after a rain. Tests during these periods tend to show nitrate accumulations, even when deficiency exists. Watch for higher nutrient levels in early season when plant is not pushed. Don't let effects of starter fertilizer fool you. A plant can "run out of gas" later if basic soil fertility is not up.

Sponsors needed for queen contest

The Tuscola County Bean Queen Committee is looking for sponsors to enter young ladies in the Bean Queen Contest. The only requirements for the young ladies are that they be unmarried and a farmer's daughter who has or is now growing beans and between 17 to 25 years of age. Entry blanks are available at the Extension Office in Caro. Prizes will be awarded to each candidate and the 1970 Tuscola County Bean Queen will be named in front of the grandstand during the County Fair.

Better work today qualifies a man for tomorrow's duties.

Leonard Premium 500 rallye-proved for total performance!



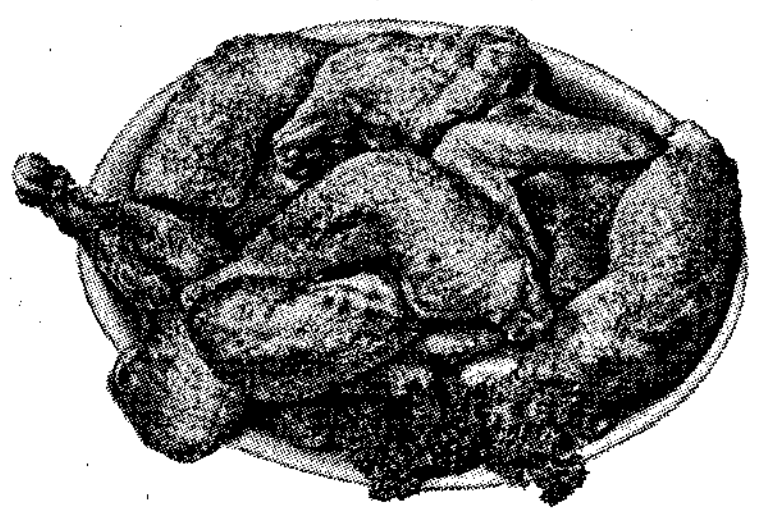
During a rallye, fuel gets a total test. It has to operate finely-tuned engines without a miss. Provide quick acceleration with lots of stops and starts. Maintain sustained speeds. And deliver top mileage to boot. Isn't that the same thing you want from a gasoline? Then switch to Leonard Premium 500: the official fuel for the Press-On-Regardless, voted best national rallye of the year by the Sports Car Club of America.

LEONARD
A great gasoline!
MAC and LEO SERVICE
PHONE 872-3122

FOR SALE POLICE CAR

1969 Chevrolet 4-door Biscayne. Submit bids to the Village Clerk, Municipal Building, 6737 Church Street, Cass City, Michigan by July 28, 1970, 7:00 p. m. The Village has the right to accept or reject any bid.

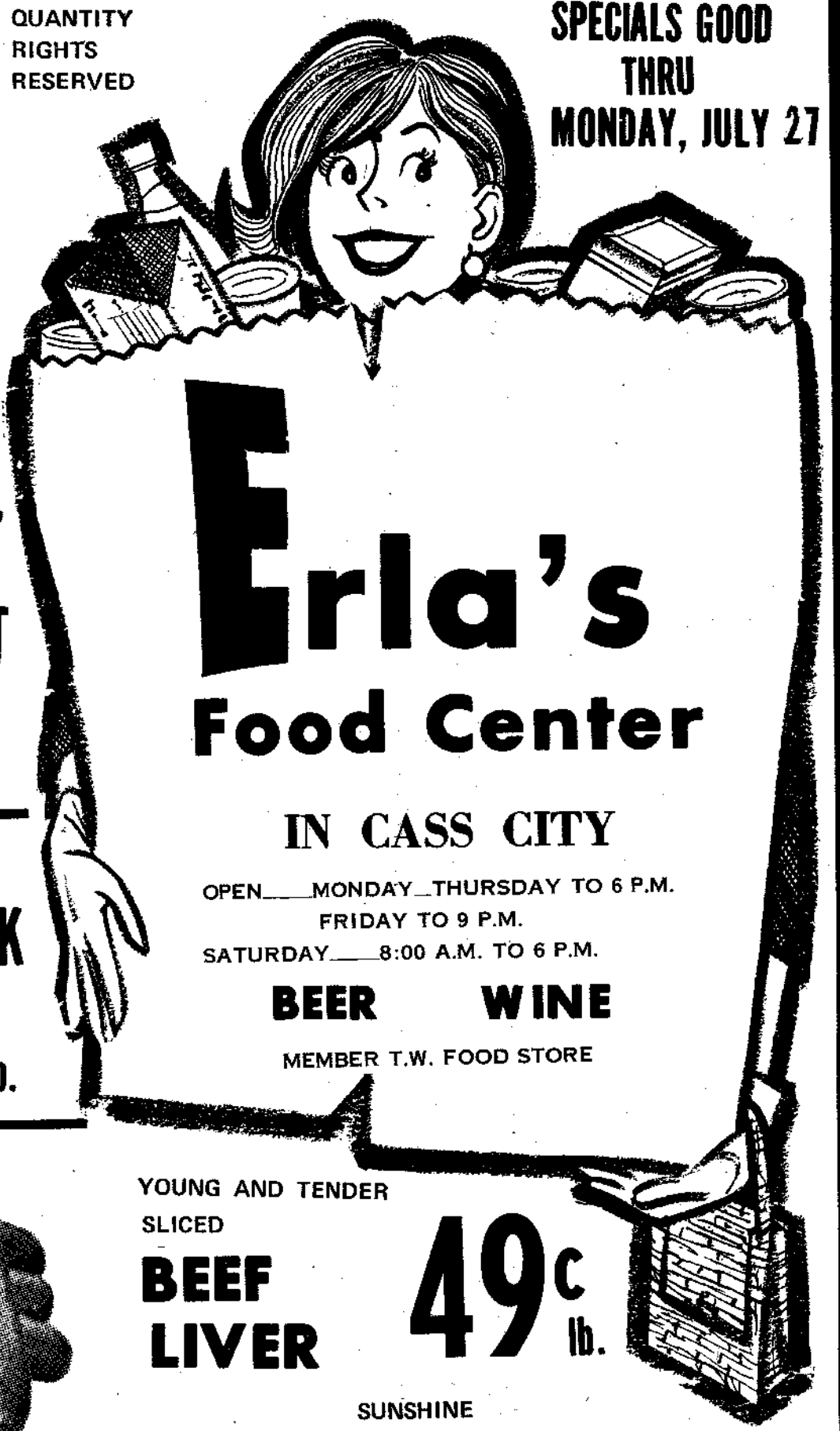
LEAN AND MEATY
BEEF SHORT RIBS
45¢ lb.



Fresh Pan Ready
Fryers
 WHOLE **32¢ lb.**
 CUT-UP **35¢ lb.**

QUANTITY RIGHTS RESERVED

SPECIALS GOOD THRU MONDAY, JULY 27



Erla's Food Center

IN CASS CITY

OPEN MONDAY-THURSDAY TO 6 P.M.
 FRIDAY TO 9 P.M.
 SATURDAY 8:00 A.M. TO 6 P.M.

BEER WINE

MEMBER T.W. FOOD STORE

ERLA'S HOME MADE
CLUB FRANKS RING BOLOGNA LIVER RINGS
59¢ lb.

ERLA'S HICKORY SMOKED
HAMS
 WHOLE OR SHANK HALF
59¢ lb.

FRESH PICNIC CUT
PORK ROAST
43¢ lb.

ERLA'S HICKORY SMOKED
RINDLESS SLICED BACON
79¢ lb.

TENDER AGED BEEF
CHUCK STEAK
69¢ lb.

FRESH SLICED BOSTON BUTT
PORK STEAK
65¢ lb.

ERLA'S HOME MADE SLICED
LARGE BOLOGNA LB. **59¢**
 ERLA'S HOME MADE
SUMMER SAUSAGE LB. **79¢**
 TENDER AGED BEEF
CHUCK ROASTS LB. **59¢**
 Blade Cut

ERLA'S MILD SENSATION
Skinless Franks
 2 lbs. **\$1.15** or **59¢ lb.**

YOUNG AND TENDER SLICED
BEEF LIVER **49¢ lb.**
 SUNSHINE
SHREDDED WHEAT 12 Lg. Biscuits Only **25¢**

Finest Foods at Greater Savings

AMERICAN LEADER
SALAD DRESSING Qt. Btls. **39¢**

KRAFT PHILADELPHIA BRAND
CREAM CHEESE 8-oz. pkg. **29¢**

SANI-SEAL
BUTTER MILK Qt. Btl. **18¢**

SWIFTENING
SHORTENING 3-LB. CAN **59¢**

JIFFY
CAKE-FROSTING-BROWNIE MIXES 10¢ EACH
 YOUR CHOICE

KRAFT
CHEEZ-WHIZ 1-lb. Jar **79¢**

FAYGO DIET
 16-oz. No-Deposit Btl.
POP **12¢**

SANI-SEAL HOMOGENIZED
MILK Gal. Ctn. **99¢**

FLYING JIB BREADED
Shrimp Pieces 2-LB. PKG. **\$1.89**

FARM CREST HOME KITCHEN
JELLY ROLLS Large Size **55¢**

LADY KAY WHITE
BREAD 5 1-lb. 4-oz. loaves **\$1.05**

BANQUET FROZEN
CHERRY PIES 1-lb. 4-oz. pkg. **25¢**

FROZEN R.S.P. On Hand Now
CHERRIES 30 LB. TIN **\$5.99**
 WE ARE NOW TAKING ORDERS ON
BLUEBERRIES 20-LB. TIN
STRAWBERRIES 30-LB. TIN
DARK SWEET CHERRIES 22-LB. TIN
RED RASPBERRIES 28-LB. TIN

DEL MONTE TOMATO
CATSUP 14-oz. Btl. **\$1.00**

KEYKO QUARTERED
OLEO 3 lb. pkgs. **89¢**

LADY KAY
HOT DOG or HAMBURG BUNS 8 ct. pkg. **29¢**

Lady Kay
POTATO CHIPS 13-oz. pkg. **49¢**

U.S. NO. 1 MICH.
POTATOES 10 LB. BAG **59¢**
 U.S. No. 1
BANANAS Lb. **10¢**
 U.S. No. 1
PEACHES Lb. **19¢**

LONG GREEN
CUKES OR CELLO
RADISHES 3 for **25¢**

Dutch Treat-Sugar Wafers or Waffle Cream
COOKIES 3 Reg. 39¢ Pkgs. **\$1.00**

VALUABLE COUPON
 WORTH 50¢

TASTER'S CHOICE 8-oz. Jar **\$1.49**
 WITH THIS COUPON
 Limit: 1 Coupon per purchase
 Redeemable only at **Erla's** W/O Coupon **\$1.99**
 Expires **SATURDAY, AUGUST 15**

FRESH THUMB APPLIANCE CENTER WHERE OVER 50 YEARS YOU STILL GET THE BEST DEALS



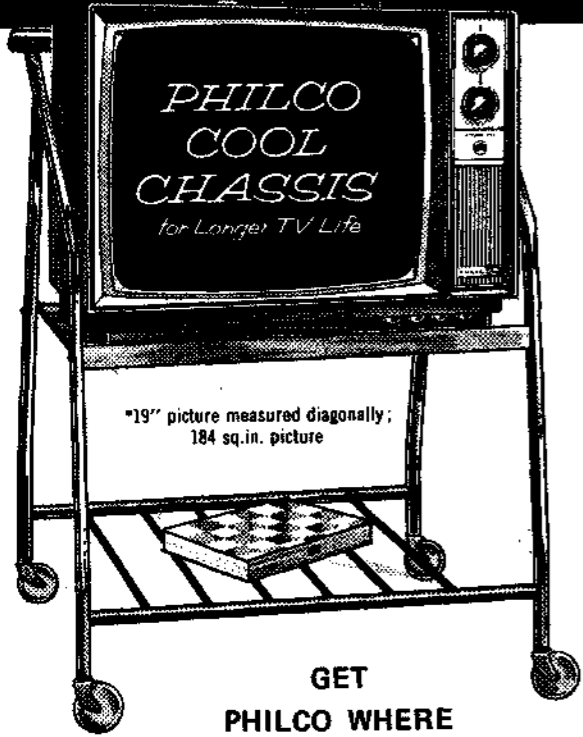
CHICKENS

5¢ Per Lb.

Limit 50 Lbs.

USDA 1 With purchase of any Major Appliance - Refrigerator-Range-Air Conditioner-Freezer-Washer-Dryer-Dishwasher-Television-Console Stereo-Furniture and Carpeting.

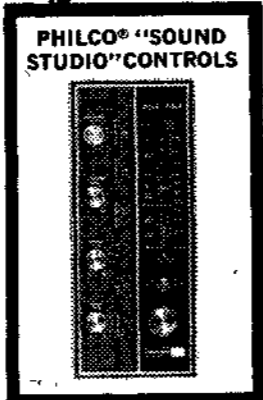
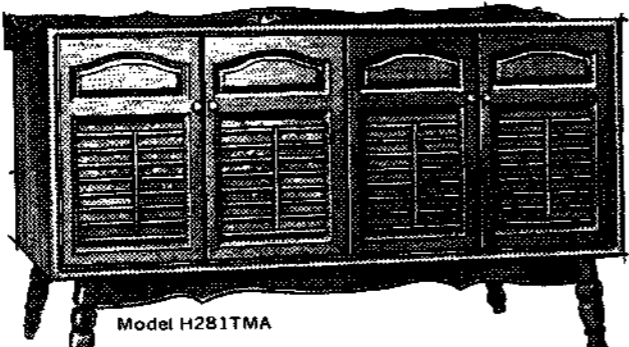
NEW BIG SCREEN PHILCO 19" PORTABLE TV



GET PHILCO WHERE ALL CONTROLS ARE IN THE FRONT - ANOTHER BETTER IDEA FROM PHILCO-FORD

Try this for Size, Sound and Value!

Solid State Stereo Phono/Radio from PHILCO-FORD



Outstanding Value!

YOU'LL LIKE OUR LOW, LOW PRICES

Early American Styling This authentically styled compact is finished to match Maple furniture.

Also Available in Spanish and Contemporary Styling

Beautiful Sound from Stereo Phono and FM Stereo, FM/AM Radio

PHILCO Big-Screen COLOR TV with New Hi-Brite MagiColor Picture Tube

PHILCO GETS THE FACTS RIGHT . . . THE REST IS EASY



Come in now! See and compare our low price for Color TV with an amazing new color brightness

PHILCO Solid State Component FM STEREO, FM/AM RECEIVER with matched AIR-SUSPENSION STEREO SPEAKER SYSTEM

- 40 watts peak music power
- One 9" oval and one 2 1/2" speaker in each detached enclosure
- Up to 28 feet of stereo separation
- Jacks for phono, tape, "record", tape playback and extra speakers
- Pecan veneer cabinets finished to match Walnut furniture

Turntable and cassette tape deck plug-in and play through the receiver-speaker system.

Model M3730TWA Receiver and Speakers

PHILCO-FORD. The better idea people in Stereo

GOLD BOND STAMPS 100 FREE WITH COUPON BELOW

Nothing To Buy

100 GOLD BOND STAMP COUPON 100
THUMB APPLIANCE CENTER

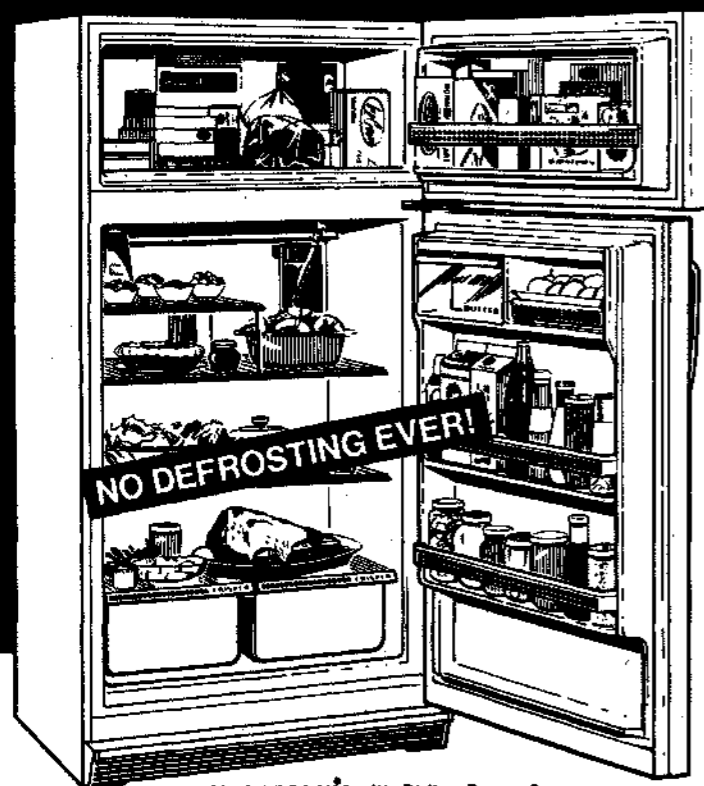
NAME _____

100 ADDRESS _____ 100



LISTEN CAREFULLY when we tell you our deal on this Philco 14.3 cu.ft. 2-door refrigerator. It could save you a bundle!

PHILCO NO FROST Refrigerator-Freezer ends messy defrosting!



Gives you 6 to 8 cu.ft. more storage space if your refrigerator is over 10 years old

- Bigger capacity in less space - freezer alone holds 102 lbs. of frozen foods
- 3 deep door shelves; 1 freezer door shelf
 - 3 1/2 roomy refrigerator shelves
 - 2 porcelain-enamel vegetable crispers
 - Separate adjustable cold controls for freezer and refrigerator

ONLY 30" WIDE Fits in the space of your old refrigerator

BUY 50 LBS. OF CHICKEN AT 5¢ per lb. - Store in Freezer Section and still have room for 52 more lbs.

AND IT'S GUARANTEED!

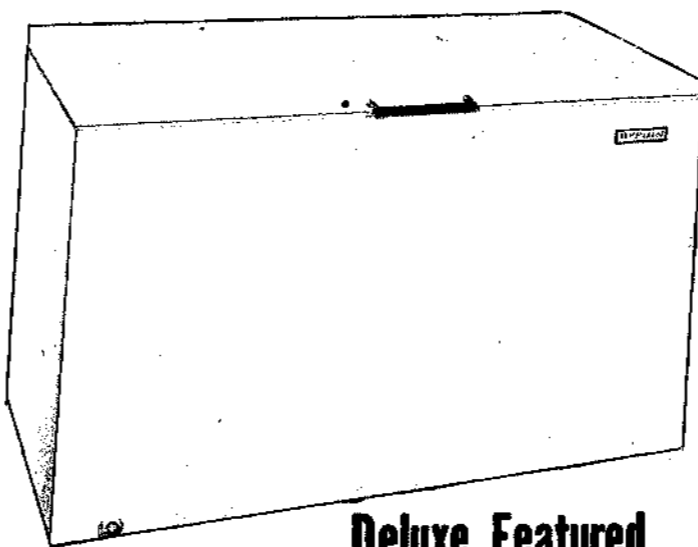
- 1-Year Component and Service Guarantee
- 5-Year Component and Service Guarantee - Sealed System

Philco-Ford guarantees original U.S. purchaser to replace any component, if found defective, and to perform any required product repair, without charge for the replacement component or service labor for one (1) year after delivery. Sealed system (compressor, evaporator, condenser and interconnecting tubing) so guaranteed for five (5) years after delivery.

WE HAVE HAD MANY VALUES OVER THE PERIOD OF 50 YEARS BUT WE HAVE NEVER HAD A SALE LIKE THIS - COME IN SEE STAN OR HAROLD

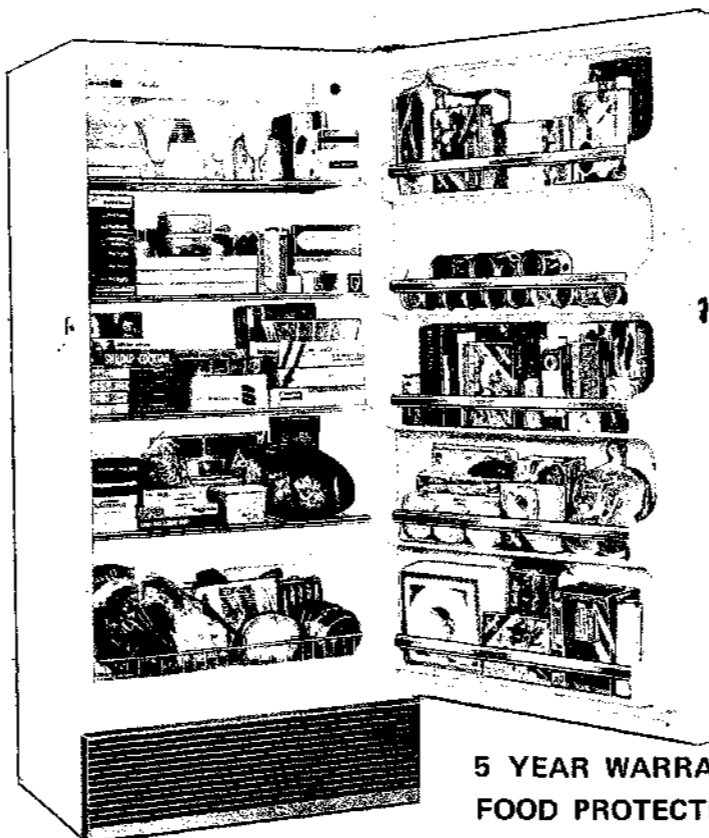
QUALITY CHEST FREEZERS THAT MEANS EXTRA VALUE

CHILL CHEST



Deluxe Featured

Terrific Deals On All Sizes



5 YEAR WARRANTY FOOD PROTECTION PLAN

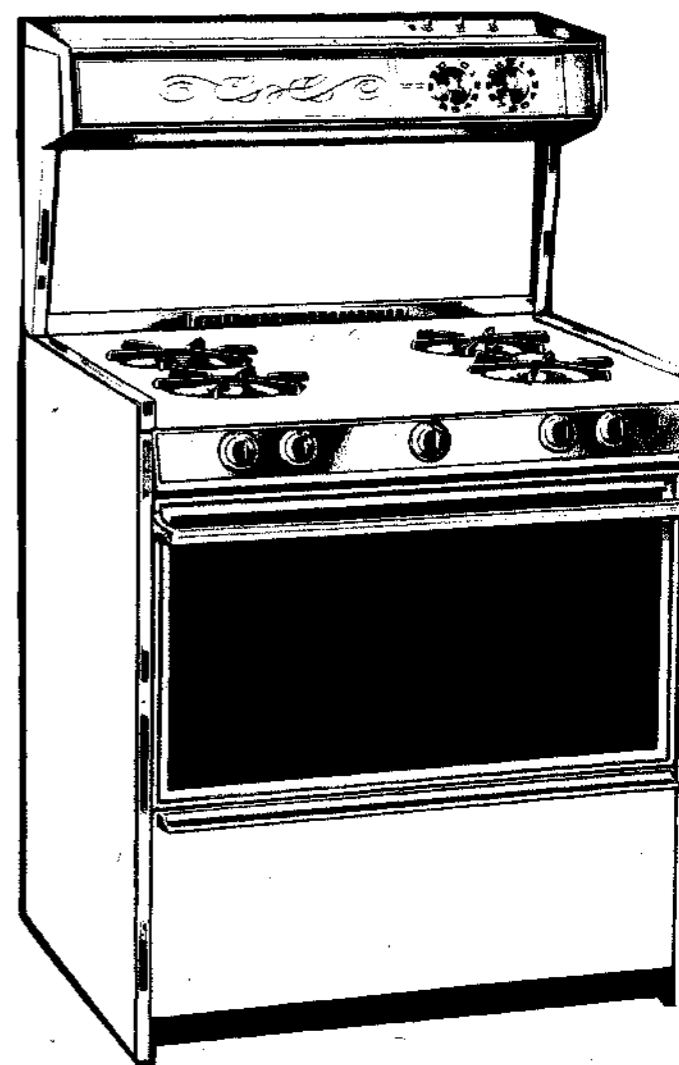
PHILCO QUALITY FREEZER ALL SHELVES SHARP FREEZE

HARDWICK

AND

CHEF'S PRIDE ELECTRIC & GAS RANGES

BUILDERS OF FINE RANGES OVER 91 YEARS



CHOOSE FROM MANY MODELS - CHOICE OF WHITE, COPPERTONE, AVOCADO BEAUTIFUL GOLD - EITHER ELECTRIC OR GAS

THUMB APPLIANCE CENTER

Phone 872-3505

Cass City

SHOP IGA... HOME OF WINNING PRICES



TABLETITE 'WHOLE'

FRYERS

GRADE 'A'

27¢

lb.

FAME 'THICK' 2-lb. Pkg.
SLICED BACON
\$1.39

HYGRADE "Great American Picnic"

- HYGRADE WEST VIRGINIA 'WHOLE' **Semi-Boneless Hams** lb. **99¢**
- HYGRADE WEST VIRGINIA **Sliced Bacon** 1-lb. 8-oz. Pkg. **\$1.49**
- HYGRADE WEST VIRGINIA 'WHOLE' **Boneless Hams** lb. **\$1.29**
- HYGRADE **'Ball Park' Franks** lb. **89¢**
- HYGRADE 'SLICED' **'Ball Park' Bologna** lb. **89¢**

Register at IGA Food Stores for Prizes . . .

- TABLETITE **Chuck Steaks** lb. **69¢**
- TABLETITE **Cube Steaks** lb. **\$1.39**
- TABLETITE **Round Steaks** lb. **99¢**
- TABLETITE **Sirloin Steaks** lb. **\$1.39**
- GLENDALÉ PIK-NIK-PAC **Skinless Franks** 2-lb. **\$1.19**
- FAME **Sliced Lunch Meat** lb. **79¢**
- COOKED & BATTERED **Omstead Smelt** lb. **59¢**

MICHIGAN

CELERY

'24 SIZE' **19¢**

STALK

FRESH **Peaches** lb. **25¢**

HOME GROWN **Peppers or Cucumbers** 3 For **29¢**

AQUA NET HAIR SPRAY

- Regular
- Hard-To-Hold
- Unscented

net 13-oz. Can **39¢**

FAME **Buffered Aspirin** 100-ct. Btl. **59¢**

REGULAR or SUPER **Meds** 30-ct. Pkg. **\$1.09**

- TABLE TREAT **SALAD DRESSING** Quart Jar **39¢**
- MICHIGAN **BEET SUGAR** 5 - lb. Bag **49¢**
- NORTHERN — WHITE or ASSORTED **TOILET TISSUE** 4 - Roll Pkg. **29¢**
- STOKELY — ORANGE or GRAPE **FRUIT DRINKS** 1-Qt. 14-oz. Can **25¢**
- FAME **APPLESAUCE** 1-Pt. 9-oz. Jar **29¢**
- MOTT'S LO-CAL **PEACH HALVES** 4 1-lb. CANS **49¢**
- DOLE LO-CAL **FRUIT COCKTAIL** 4 1-lb. CANS **49¢**
- FAME **PORK & BEANS** 1-lb. 14-oz. Can **23¢**
- VAN CAMP'S **PORK & BEANS** 1-lb. 15-oz. Can **25¢**
- GENERAL MILLS **CHERRIOS CEREAL** With Coupon Below net 10½-oz. Pkg. **25¢**
- PILLSBURY 2-LAYER — 7 VARIETIES **CAKE MIXES** With Coupon Below 4 1-lb. 2-oz. PKGS. **\$1.**

- FAME **Cider Vinegar** Gallon Jug **69¢**
- SWEET, HOT DOG or HAMBURG **Vlasic Relishes** net 10-oz. Jar **25¢**
- WAGNER — 6 FRUIT FLAVORS **Fruit Drinks** 4 1-Qt. BTLs. **99¢**
- FIRESIDE REGULAR **Marshmallows** 1-lb. Pkg. **25¢**
- STA-PUP **Fabric Softener** Gallon Jug **89¢**
- IGA Regular, Menthol, Filter **Cigarettes** 'KING' SIZE 10-Pack Ctn. **\$2.99**
- FAME **Strawberry Preserves** 1-lb. 4-oz. Jar **49¢**
- TASTY **Dog Food** 5 - lb. Bag **59¢**

- NABISCO **RITZ CRACKERS** net 12-oz. Pkg. **39¢**
- IGA **HAMBURG or HOTDOG BUNS** 12-ct. Pkg. **29¢**
- OVEN FRESH 'FRUIT' **TURNOVERS** 8-ct. Pkg. **49¢**



FAME 'SOFT' **MARGARINE** 1-lb. Pkg. **29¢**

MORTON • CHICKEN • BEEF • TURKEY **POT PIES** 6 net 8-oz. PKGS. **\$1**



BORDEN'S **ICE POP STIX** 12-ct. Pkg. **49¢**

FAME 'FROZEN' **ORANGE JUICE** 5 net 6-oz. CANS **89¢**

NORDIC COOKWARE

Join the Club... 25 COUPONS AND THE SET IS **YOURS!**

NORDIC WARE PURCHASE CLUB COUPONS FOR ONLY **99¢**

Heaviest gauge cookware with china-like Permo-Porcelain exteriors

Cooking surfaces of triple-layer scratch-tipped hard base Shield Coat Teflon™ durable enough to use with metal spatulas or spoons. It's our finest cook and serveware and comes in beautiful blended contemporary colors of Avocado Green and Flame Red

HEATPROOF • FADEPROOF • STAIN RESISTANT

Pillsbury's 2 LAYER **CAKE MIXES** with this coupon 4 1-lb. 2-oz. PKGS. **\$1.**

LIMIT ONE COUPON PER UNIT PURCHASED COUPON EXPIRES ON July 25, 1970

GOOD ONLY AT CASS CITY IGA STORE

40 EXTRA **GOLD BOND STAMPS** With Purchase ANY BAG **POTATOES 10 LB. OR LARGER** Void after Sat., July 25

Cheerios **CHERRIOS CEREAL** with this coupon net 10½-oz. Pkg. **25¢**

LIMIT ONE COUPON PER UNIT PURCHASED COUPON EXPIRES ON July 25, 1970

GOOD ONLY AT CASS CITY IGA STORE

40 EXTRA **GOLD BOND STAMPS** With Purchase 1 LB. **IGA POTATO CHIPS** Void after Sat., July 25

40 EXTRA **GOLD BOND STAMPS** With Purchase ANY BEEF ROAST Void after Sat., July 25

40 EXTRA **GOLD BOND STAMPS** With Purchase 3-OZ. SIZE **LIPTON INSTANT TEA** Void after Sat., July 25

CASS CITY IGA FOODLINER