

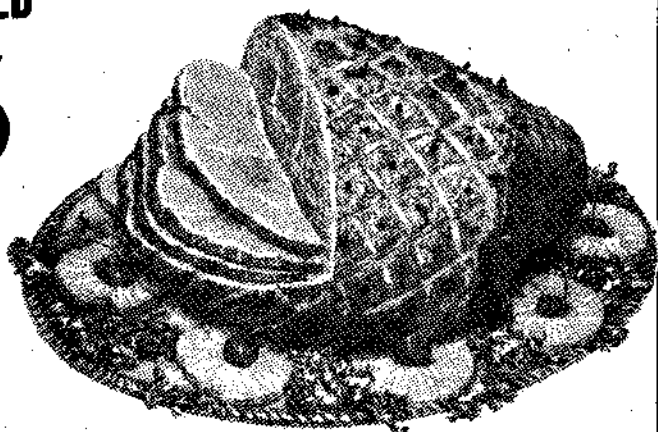
SAVE MONEY ON THESE MENU MAKERS

ERLA'S HOME CURED SMOKED

HAMS

59¢ lb.

(Whole or Shank Half)



FRESH WHOLE OR HALF

PORK LOINS

65¢ lb.

(SLICED FREE)

ERLA'S HOMEMADE RINDLESS

SLICED BACON

69¢ lb.

TENDER AGED BEEF BLADE CUT

POT ROAST

59¢ lb.

ERLA'S MILD SENSATION

SKINLESS FRANKS

2 lbs. \$1.15 or 59¢ lb.

BOSTON BUTT SLICED

PORK STEAKS

65¢ lb.

BOSTON BUTT

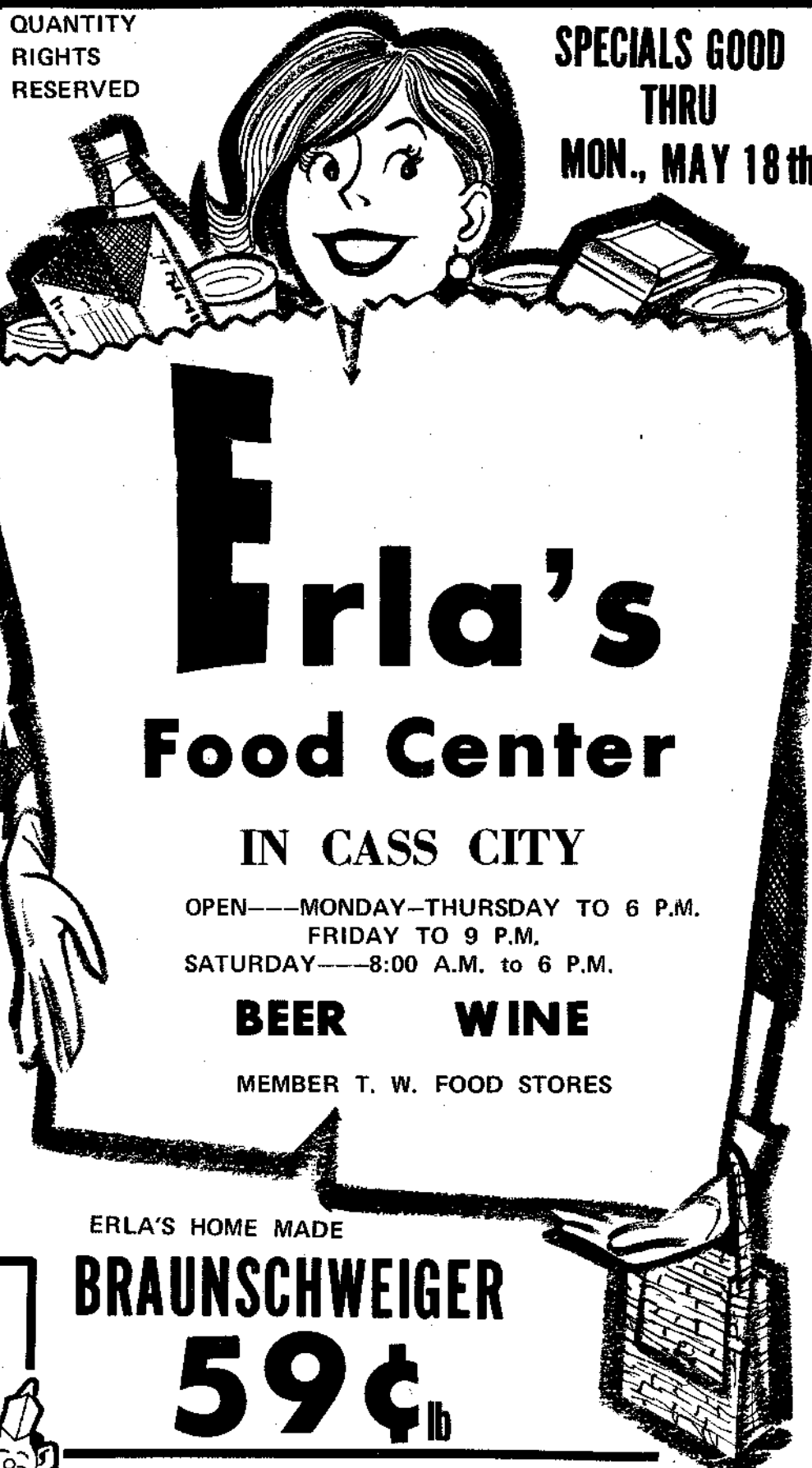
PORK ROASTS

59¢ lb.

ERLA'S HOME CURED SMOKED

PICNICS

45¢ lb.



SPECIALS GOOD THRU MON., MAY 18th

QUANTITY RIGHTS RESERVED

Erla's Food Center

IN CASS CITY

OPEN—MONDAY—THURSDAY TO 6 P.M.
FRIDAY TO 9 P.M.

SATURDAY—8:00 A.M. to 6 P.M.

BEER WINE

MEMBER T. W. FOOD STORES

ERLA'S HOME MADE

BRAUNSCHWEIGER

59¢ lb.

FRESH PICNIC CUT

PORK ROASTS

43¢ lb.

TENDER AGED BEEF

RIB STEAKS

89¢ lb.

FRESH OR SMOKED

PORK HOCKS

45¢ lb.

YOUNG AND TENDER

BEEF LIVER

SLICED

49¢ lb.

McDONALD'S

POPSICLES

doz. 49¢

Banquet Frozen

APPLE or PEACH PIES

1-lb. 4-oz. pie 23¢

McDonald's

SHERBET

All-Flavors

1/2-Gal. Ctn. 59¢

THANK YOU NEW!

BLUEBERRY - APPLE CHERRY or PEACH

CRISP

1-lb. 9 3/4-oz. pkgs. 69¢

DUNCAN HINES

CAKE MIXES

1-lb. 2-oz. pkg. 3 89¢

ALL FLAVORS

OLD SOUTH FROZEN

ORANGE JUICE

12-oz. cans 3 \$1.00

TROPICANA LOW-CAL

FRUIT DRINKS

ORANGE OR GRAPE

1/2-Gal. Jug 39¢

BLUE SEAL SOLID PACK

OLEO

1-lb. pkg. 18¢

MEADOWBROOK

GREEN PEAS CUT CORN MIXED VEGETABLES

1-lb. 8-oz. cans Each 33¢

JENO'S DOUBLE SIZE

CHEESE PIZZA

1-lb. 13-oz. size 69¢

JENO'S DOUBLE-SIZE

PEPPERONI PIZZA

1-lb. 13-oz. size 79¢

REAL PRUNE

PRUNE JUICE

1 pt. 8-oz. btl. 29¢

MICHIGAN

COTTAGE CHEESE

1-lb. 33¢

OLD FARM RASPBERRY AND STRAWBERRY

PRESERVES

4-lb. Jar 99¢

FIRST PRIZE

SHORTENING

3 lb. can 49¢

KEEBLER'S

SWEDISH KREMES (13-oz.) DUTCH APPLE (14-oz.)
COCOANUT-CHOCOLATE DROPS (15-oz.)
CHOCOLATE FUDGE SANDWICH (16-oz.)
GRAMMY'S (16-oz.)

2 pkgs. 89¢

PRODUCE SPECIALS

FRESH

Asparagus

1-lb. bunch 29¢

U.S. No. 1 MICHIGAN

Potatoes

20 LB. BAG \$1.19

CELLO

Radishes

10¢ pkg.

GREEN

Onions

10¢ bunch

U.S. No. 1 NEW TEXAS COOKING

Onions

3 lb. bag 39¢

LONG GREEN

Cukes

10¢ each

CLOSE-UP

TOOTHPASTE

3-oz. pkg. 49¢

NORTHERN

BATHROOM TISSUE

8 Roll Pack 79¢

FONDA WHITE

PAPER PLATES

100 ct. pkg. 59¢

DOW ZIPLOC

STORAGE BAGS SANDWICH BAGS

20 ct. pkg. 33¢ | 25 ct. pkg. 29¢

MADE-RITE

CHEESE CORN

4 1/2-oz. pkg. 24¢

LADY KAY WHITE

BREAD

1-lb. 4-oz. loaves 5 \$1.05

LADY KAY HOT DOG OR HAMBURG

BUNS

8-ct. pkg. 29¢

SCHAFFER'S ITALIAN

BREAD

1-lb. 4-oz. loaves 3 \$1.00

Legion Auxiliary plans poppy sale

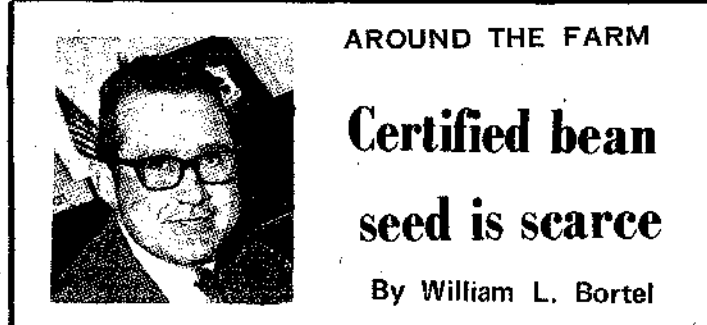
Twenty-two were present Monday evening for the May meeting of the American Legion Auxiliary. The group included four members of Tri-County post, who had been invited to attend.

During the business meeting, with Mrs. Philip McComb presiding, plans were discussed for the poppy sale to be held May 21-23.

Mrs. McComb appointed a nominating committee, Mary Gultis, Peggy McConnell and Esther Dinkmeier.

There were games and refreshments at the close of the business meeting with Mrs. Cass Bartnik, Mrs. Leo Tracy and daughter, Teresa in charge.

The door prize went to Mrs. Henry Cherry.



AROUND THE FARM

Certified bean seed is scarce

By William L. Bortel

A bean grower in 1970 has many decisions to formulate before he plants beans early in June.

First of all, a grower must decide what quality of bean he will be satisfied with this year. Bacterial blight diseases during 1969 seriously reduced the supply of certified bean seed for the 1970 planting. Some certified seed of all varieties is available but in limited supply. If you do not have your bean seed located, trying to find good bean seed is very difficult. It sounds as if all of the certified seed is spoken for and the year from certified seed should not be bought if it was not tested for blight through Michigan State University. The year from certified seed should have a reading of 8 and more than 16 possible beans infected per acre.

The second decision might have influence on the first decision—what kind of beans to plant. Red kidney beans have gained popularity and on the good dark loams (preferably sandy loams), the red kidney bean has consistently outyielded the white bean. There is room for a few more acres of red beans and every acre planted to

red beans will take pressure off from the white beans. The source of red kidney bean seed is strictly limited to certified seed and you have four choices: (1) Western Dark, (2) Western Light, (3) Charlevoix, and (4) Manitou. The maturity of the Western Dark, Western Light and Manitou are about like the Michelite beans. The Charlevoix is more similar to the Sanjac in maturity.

You may have a field very conducive to the red beans and the seed easier to locate than good white bean seed. However, never plant red kidney bean seed unless it is certified because they are very susceptible to bean blight.

The third decision is what herbicide to use. There are about four chemicals to select from this year: (1) Eptam, (2) Amiben, (3) Trefluralin, and (4) Preforan. Comments on each chemical is as follows: (1) Eptam has been a consistent herbicide giving excellent results. However, there has been a little bean injury and this usually can be controlled by using a little less Eptam, working the ground shallow and putting the Eptam on 2 days prior to planting. Some growers have had excellent results with a quart and one half of Eptam. This herbicide has given the bean grower the best results to date. (2) Amiben is an excellent herbicide if you get rain within ten days to two weeks after using the chemical. Amiben can be incorporated like Eptam and this will help the activation of the chemical. Some growers band Amiben at planting, which cut the costs and have given them excellent results. (3) Trefluralin has been used in the past with poor results. This year Trefluralin representatives suggest that you apply the chemical two weeks before planting and return to the field just prior to planting and work the soil again which kills the ragweed. (4) Preforan is new and growers will learn more about the product after seeing the results through this growing season.



Computer offers instant answers

Picking up the receiver and talking to a computer will be part of an experiment conducted at the Tuscola County Cooperative Extension Office. Tuscola County will be one of seven counties where Michigan State University is installing a touch-tone phone for a trial basis.

The touch-tone phone will have a series of cards to reach the computer. Upon reaching the computer, a series of questions will be punched so the computer can formulate an answer as to what herbicide to use on your corn crop when sugar beets will be planted next year and the main weed problem is quackgrass.

Many other programs have been worked out with the computer such as custom harvest of your crop versus owning the harvesting equipment, fertilizer recommendations and many other programs where there are several alternatives.

By having access to the computer, the Tuscola County farmers will have the latest in research at their fingertips. The farmer may stop at the Extension Office in Caro any time and the computer can be reached for their answer.

After six months in evaluating the use of a computer with

agriculture problems the Tuscola County Board of Commissioners will decide if the experiment is of merit to the county. Michigan State University will be covering the costs during the first six months.

Methodist men hold district rally

The Northern subdivision of Methodist men from the Port Huron district attended a rally Monday evening, May 4, at the Brown City Methodist church. About 200 attended.

A business meeting was held and entertainment was by the Calvarymen, a vocal quartet from the Flint area. All officers were re-elected for another year. Dr. Willard Haist of Pigeon is president; William O'Dell, vice-president, and Donald Buehrly, secretary-treasurer.

Those from Trinity Methodist church who attended were Keith McConkey, Albert Gallagher, Frank Hutchinson, Stuart Merchant and William O'Dell. Men from Salem United Methodist church who attended were Rev. Ira Wood, Eldon Stoutenburg, Stanley Kirt, Donald Bushrly, Maurice Joos, Albert Troup and Leonard Damm.

"If It Fitz. . ." Two different trips

BY JIM FITZGERALD

You might call this a tale of 2 trips.

It was during the last meeting of our poker club that I was struck by the big difference between these 2 trips.

The Apollo 13 astronauts were on their way back from moon country. That's 1 of the trips. Between beers and shuffles, there was considerable talk about the 3 men risking their necks in space.

And later, when the space talk faded, the host of that night's party was asked the whereabouts of his wife. He explained that she was out of town but "she'll walk through that back door at 10:20 p.m."

But I had to wonder, that poker night of Apollo 13. Three astronauts soar away and return to the adulation and tears of an entire nation. Thousands of boys go to Vietnam and return battered, or in boxes. And only their families weep and care, really care.

Sure, I am awed by the incredible technology and courage that puts us on the moon. But I am saddened by a nation that sweats blood with the astronauts and doesn't care that 300 men were killed in Vietnam last week. Or that thousands of young men are doomed to hospitals

for life.

Who has given the most for his country? And when will this country deserve what these few people are giving?

Shoot me if you will, but I don't give a damn about trips to the moon. Not as long as my friends are making trips to that hospital.

Formal Wear
RYAN'S
Men's Wear and Formal Wear Rental
Phone 872-3431

Want Ads
Help You Sell
Unused Items
FAST
Call 872-2010

Carefree comfort with Gulf housewarming Service

All these benefits add up to carefree comfort with our exclusive Gulf Housewarming Service.

Expert equipment service
Gulf Solar Heat® oil
Automatic delivery
Easy, equal monthly payments
Plus the availability of the fuel-saving Gulf Econojet oil burner.
Call us today!

CASS CITY OIL & GAS CO.
Phone 872-2065

For the Finest Selection of GREETING CARDS and GIFT CANDLES

COACH LIGHT PHARMACY
CARD 'N CANDLE SHOP

YOUR ONE STOP SHOPPING CENTER

Want Help Finding What You Want? Try The Want-Ads Today!

GROSS & O'HARRIS MEAT MARKET	
SPECIAL THIS WEEK	
FARMER PEETS -- OLD FASHIONED -- FULLY COOKED	
BONELESS HAMS	
WHOLE OR SHANK HALF	69¢ lb.
BUTT-HALF -- 79¢ lb.	
LEAN - MEATY	39¢ lb.
BEEF SHORT RIBS	TENDER
	69¢ lb.
FRESH	FRESH - GRADE A - LARGE WHITE
GROUND BEEF	EGGS
GROUND MANY TIMES DAILY FROM FRESH BEEF ONLY	2 DOZ. 89¢
PORK STEAK	LONDON'S
79¢ lb.	MILK
	NEW PLASTIC GALLONS
	\$1.07 GALLON

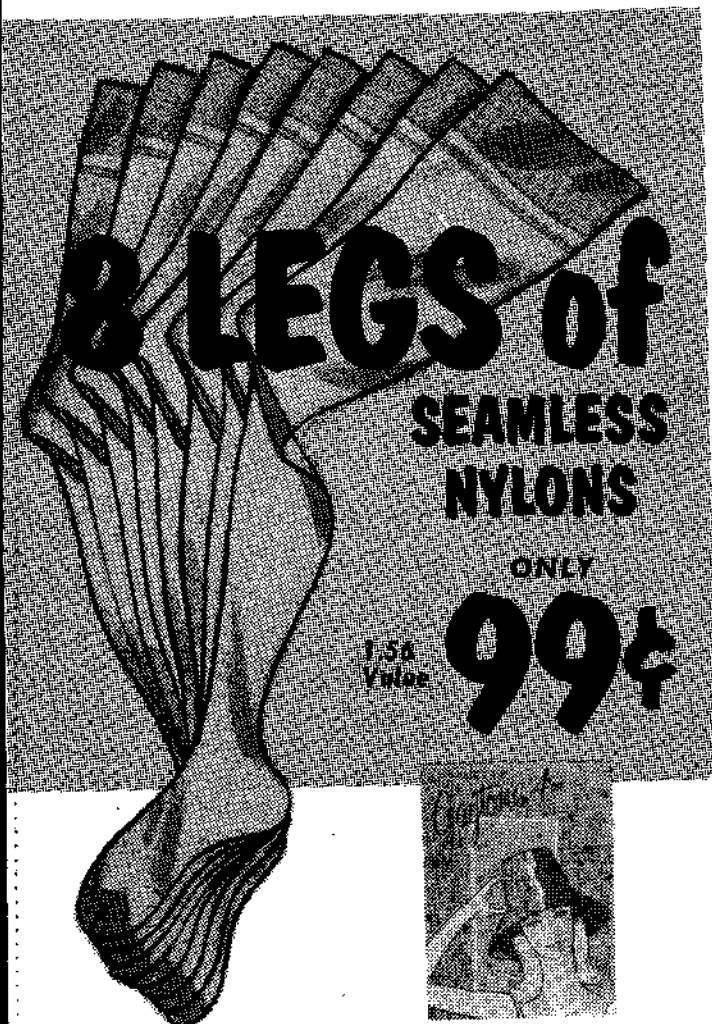
Park In Rear - USE OUR NEW REAR CUSTOMER ENTRANCE

GROSS & O'HARRIS MEAT MARKET	WE FEATURE . . .
FREE PARKING IN REAR	HOME MADE SAUSAGE
SERVING CASS CITY FOR OVER 74 YEARS	TURKEYS
LARGE CITY LOT--ALSO AT BACK DOOR	GROCERIES
	FRESH DRESSED CHICKENS
	BULK CORNED BEEF
	HOME DRESSED MICHIGAN BEEF AND PORK

FINAL 3 DAYS

BEN FRANKLIN

GRAND OPENING



8 LEGS of SEAMLESS NYLONS
ONLY **99¢**

1.56 Value

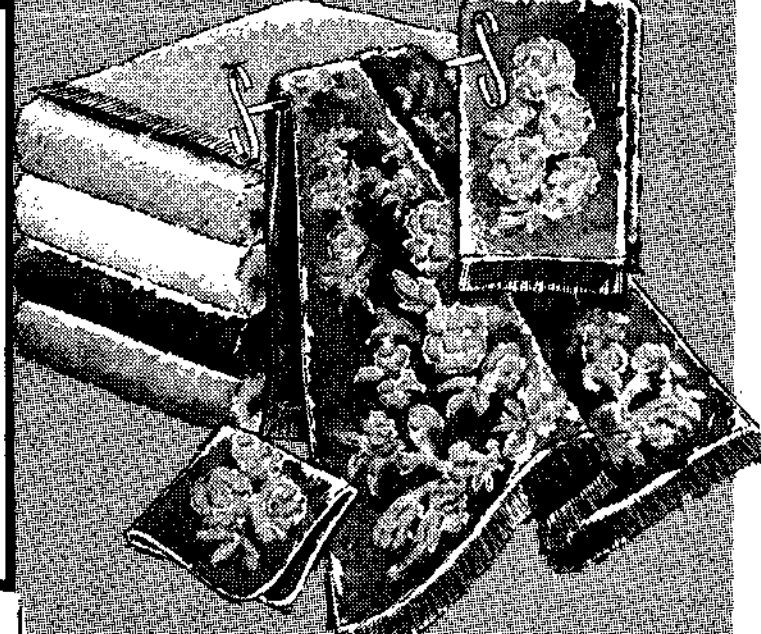
MORE WEAR FOR YOUR MONEY...
You get 8 nylons (4 pr.) of one color and size. If one is ruined, you still have 7. First quality micro mesh in choice of shades. Women's 9-11.




Ruth Barry PANTY HOSE
One Size Fits All!
Eliminate sagging with new super stretch panty hose! For women 5-ft. to 5-ft. 7-in. 4 shades.
Reg. 1.49 **99¢**



NEW! DUSTERS
In Solids & Prints
OUR LOW PRICE 28¢
Linger over breakfast while looking your best in a snap-front, short sleeve duster. Buy 2 at this low price!



MIX & MATCH TOWELS
24x44-in. BATH TOWELS
Cannon velour sheared towel sets in solids and jacquards... brighten your bath!
Reg. 1.19 16x26-in. Hand Towels 97¢
Reg. 59¢ Matching Wash Cloths 47¢
157 Reg. 1.99

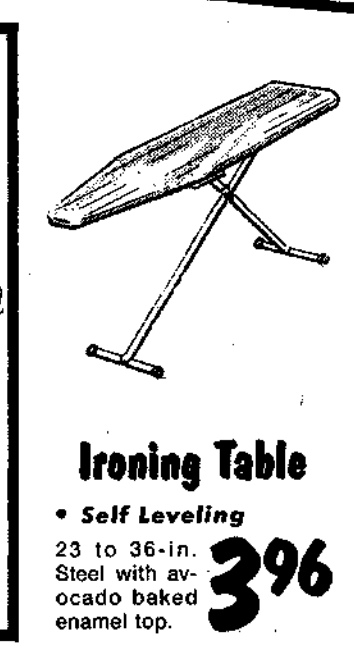


Infant Seat
• 4 Positions!
Reg. 3.99 **299**
Take baby along in new avocado plastic seat, safety belt.



Boys' Jeans
• Sanforized Denim
Reg. 1.59 **99¢**
Riveted; double stitched seams. Many popular colors.

Women's Sneakers
• White Duck Canvas
Reg. 1.99 **148**
Crepe type outsole for comfortable support. Sizes 4-10.



Ironing Table
• Self Leveling
23 to 36-in. Steel with avocado baked enamel top.
396



YOUR CHOICE 88¢

HOUSEWARES SPECIALS

Now you can really clean-up... save more than ever before on these handy household helpers. Items to use from the kitchen to the bath that make your work easier... for less money!

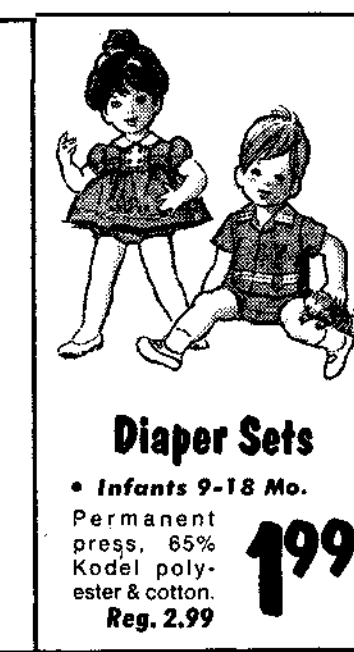
- Laundry Basket Reg. 1.39... 88¢
- 4 Mixing Bowls Reg. 1.29... 88¢
- 5-Cup Percolator Reg. 1.79... 88¢
- 3-Qt. Saucepan Reg. 1.49... 88¢
- Covered Cake Pan Reg. 1.98... 88¢
- 3 Extension Cords Reg. 2.25... 88¢
- 2-Quart Covered Saucepan Reg. 1.49... 88¢



Boys' Underwear
• T-Shirts & Briefs
Preshrunk cotton, he won't wear them out!
White.
Reg. 1.59 **99¢** Pkg. of 2




Matching Accessories Kitchen Coordinates
Gold Rooster & Green butterfly patterns. Soft cotton. Pot Holder & Dish Cloth 53¢ ea. Half Apron. Reg. 2.00... 1.63
Towel **83¢**



Diaper Sets
• Infants 9-18 Mo.
Permanent press. 65% Kodel polyester & cotton.
Reg. 2.99 **199**



Girls' Dresses
• Juvenile Size 4 to 6X
Permanent press 'big-girl' styles in bright colors.
Reg. 3.99 **366**



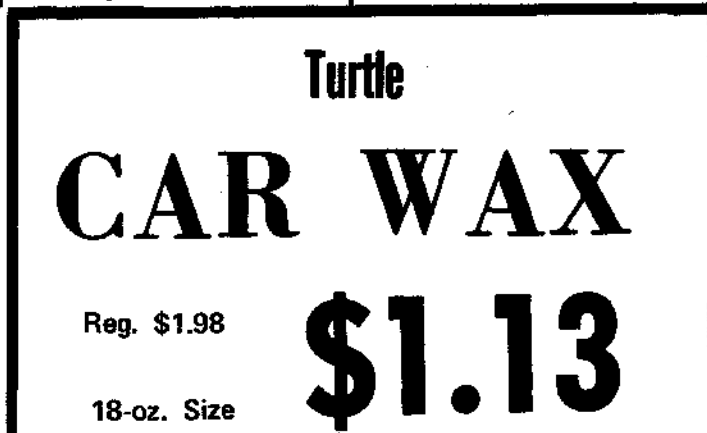
Spanish Accent Rugs
• 27x48-Inch
2-tone patterns. Viscose & rayon. Non-slip.
Reg. 5.99 **447**



No-Iron Dresses
• In Toddler Sizes
Permanent press blends in bright wash-fast colors.
Reg. 3.99 **366**



Mens' Underwear
• T-Shirts & Briefs
Preshrunk cotton, smooth and long-wearing. White.
Reg. 1.99 **133** Pkg. of 2



Turtle CAR WAX
Reg. \$1.98 **\$1.13**
18-oz. Size

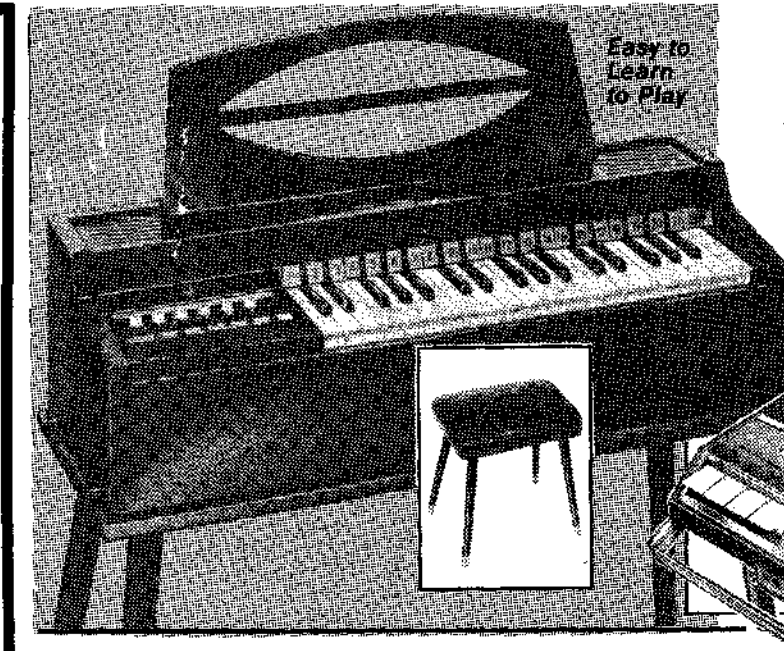


Ironing Table Covers
• Homecrest®...
Sanforized cotton, silicone or Teflon finish. Colors.
Reg. 98¢ **77¢**

Bright Colors... Terry Cloth WASH CLOTHS
12x12-in. terry wash cloths in a wide range of vivid colors to suit you!
ONLY **9¢**



Majesty Rug Yarn
• 7-Yard Skeins
Spun yarn of 25% cotton, 75% rayon. Many colors.
Reg. 39¢ **27¢** SKEIN



MAGNUS CHORD ORGAN ENSEMBLE
37 Ivorytone treble keys, 12 chord buttons. Includes rack, bench & 3 music books. Mahogany plastic.
OUR LOW PRICE **39.95**



CASSETTE RECORDER
Reg. 29.95 **22.22**
Includes recording mike, carrying strap, & earphone.
Reg. 1.59 Tapes... 99¢



Tweed Rug Runner
• 24x60-in. Long
100% loop pile. Rayon rug runner for hall or stairs.
Reg. 2.29 **183**

G.E. Alarm Clock
• 3 1/2-in. high
Plastic case. Perfect for students.
296

BEN FRANKLIN

CASS CITY

WHERE EVERYTHING YOU BUY IS GUARANTEED



IGA LEADS THE WAY WITH

LaCHOY net 3-oz.
Chow Mein Noodles 17¢
 CHICKEN or BEEF
Chow Mein lb. 49¢

GREATER SAVINGS

40 EXTRA GOLD BOND STAMPS
 With purchase Any 6 pkgs.

40 EXTRA GOLD BOND STAMPS
 With purchase any 1-lb. 6-oz. jar

40 EXTRA GOLD BOND STAMPS
 With purchase each pkg

GARDEN SEEDS
 Void after Sat., May 16

VELVET PEANUT BUTTER
 Creamy or Krunchy
 Void after Sat., May 16

WHOLE OR CUT UP FRYERS
 Void after Sat., May 16

FAME **LUNCHEON MEAT** 1-lb. Pkg. **79¢** TABLETITE **Rib Steaks** lb. **\$1.09**

40 EXTRA GOLD BOND STAMPS
 With purchase ANY BAG POTATOES 10 lbs. or larger

Void after Sat., May 16



TABLETITE 'Arm Cut' **Chuck Roast** lb. **79¢**
 FAME Whole **Semi-Boneless Ham** lb. **79¢**

TABLETITE 'Arm Cut' **Swiss Steak** lb. **89¢**
 TABLETITE **Hamburger** lb. **69¢** or 3 lb. pkg. or more **63¢** lb.

FAME FRANKS 59¢ lb.

TABLETITE

'BLADE CUT'

CHUCK ROAST lb. 57¢

TABLETITE **Mixed PORK CHOPS** lb. **79¢**
 FARMER PEET'S **RING BOLOGNA** lb. **69¢**
 TABLE KING **SLICED BACON** 1-lb. Pkg. **79¢**

TableRite 'BOSTON BUTT'

PORK ROAST lb. 49¢



Golden Ripe

BANANAS lb. 10¢

CUCUMBERS
RADISHES
Green ONIONS
 'Your Choice'

3/39¢

SUNSHINE HYDROX net 1 1/2-oz.
 Cherry **COOLERS** net 10-oz.
2/89¢

IGA 'WHOLE' **Sweet Pickles** Pint Jar **49¢**
 WARSAW 'FALCON' **'Polish' Dills** Qt. Jar **49¢**
 FAME **Applesauce** 1-lb. Can **3/49¢**
 FIRESIDE 'MINIATURE' **Marshmallows** net 10 1/2-oz. **19¢**
 FAME **Salad Oil** 1-Pint 8-oz. **45¢**
 IGA **Potato Chips** net 14-oz. **49¢**
 BRACH'S **Fruit Pillows** net 10-oz. Pkg. **39¢**
Jelly Rings 1-lb. Pkg. **39¢**

FAME 'FRUIT' **COCKTAIL** 1-lb. Can **19¢**
 FAME **SHORTENING** 3-lb. Can **69¢**
 FAME 'LIQUID' **DETERGENT** Quart Btl. **39¢**

FAME 'LIGHT CHUNK' **TUNA** net 6 1/2-oz. Can **37¢**
 OSCAR MAYER **BEEF STEW** 1-lb. 8-oz. **49¢**
 DUNCAN HINES 1-lb. 2 1/2-oz. **CAKE MIXES** **25¢**

10¢

• Tomato • Bean
 • Vegetable
 • Chicken Rice
 • Chicken Noodle
 • Mushroom
 net 10 1/2-oz.

FAME SOUP

IGA CLIP-A-COUPON

ROBIN HOOD **FLOUR** 5-lb. Bag **39¢**
 (WITH COUPON)

Limit One Per Customer - Expires May 16, 1970
 Good Only at Cass City IGA Foodliner

IGA CLIP-A-COUPON

HILLS BROS. **COFFEE** 2-lb. Can **\$1.29**
 'ALL GRINDS' (WITH COUPON)

Limit One Per Customer - Expires May 16, 1970
 Good Only at Cass City IGA Foodliner

FAME - QUARTERS **MARGARINE** 1-lb. Pkg. **6 for \$1**

Borden's **ICE CREAM BARS** 6-ct. Pak **49¢**

MORTON 1-lb. 4-oz. **FRUIT PIES** • Apple • Cherry • Peach **4 for \$1**

Morton **CREAM PIES** '6 Delicious Flavors' net 14-oz. **4 For \$1.**

IGA Table Treat **BREAD** 1-lb. 8-oz. Loaves **4 FOR \$1**

Oven Fresh Lunch Box **CAKES** net 2 1/2-oz. **9/99¢**

Farm Crest 'Lemon Creme' **TURNOVERS** 6-ct. Pkg. **59¢**

LEMON FRESHENED **BORAX** with this coupon **Fab** **59¢**
 LAUNDRY DETERGENT WITH THIS COUPON
 LIMIT ONE COUPON PER CUSTOMER
 COUPON EXPIRES ON May 16, '70
 SAVE 24¢
 This coupon redeemable at Cass City IGA Foodliner

AJAX with this coupon **AJAX** **59¢**
 LAUNDRY DETERGENT WITH THIS COUPON
 LIMIT ONE COUPON PER CUSTOMER
 COUPON EXPIRES ON May 16, '70
 SAVE 16¢
 This coupon redeemable at Cass City IGA Foodliner

BLUE RIBBON 10 **Toilet Tissue** Rolls **69¢** THANK YOU • TOMATO • APPLE **Juice** Quart **29¢**

CASS CITY IGA FOODLINER
 STORE HOURS: THURSDAY & FRIDAY NIGHTS 'TIL 9:00.
 DAILY TO 6:00.

NORDIC COOKWARE
 Join the Club... 25 COUPONS AND THE SET IS **YOURS!**
 PURCHASE CLUB COUPONS FOR ONLY **99¢**
 Heaviest gauge cookware with china-like Permo-Porcelain exteriors
 Cooking surfaces of triple layer, scratchproof, hard base Shield Coat Teflon II, durable enough to use with metal spatulas or spoons. It's our finest cook and serveware and comes in beautiful, blended contemporary colors of Avocado Green and Flame Red
 HEATPROOF • FADEPROOF • STAIN RESISTANT

DIAL 'Anti-perspirant' **DEODORANT** net 5-oz. Can **59¢**
 PEPSODENT **TOOTHPASTE** net 3 1/2-oz. Tube **2/\$1.**
TOOTHBRUSHES MEDIUM or HARD **3/\$1.**
 FAME 'Buffered' **ASPIRIN** 100-ct. **2/\$1.**