

Cass City Area Church Notes in Brief

Fraser Presbyterian Church—Rev. John W. Osborn, pastor. Sunday School 10 a.m. George Fisher Sr., Superintendent. Worship service 11:15 a.m. Wednesday, 7:30 p.m. Youth Fellowship. Mrs. Arthur Battel and Morris Taylor, leaders. Friday - 8:30 p.m., choir practice. Mrs. Harry Stine, pianist. Bruce MacRae, Clerk of the Session.

Shabbona Methodist Church—Rev. and Mrs. Joseph Shaw, ministers. Phone Swozer 2899. Sunday School Supt., Dale Turner. Assistant, Arthur Sevrance.

Sunday School 10:30 a.m. Worship service 11:30 a.m. Wednesday night, prayer meeting, 8 p.m. WSCS, second Wednesday every month. MYF (Methodist Youth Fellowship) meets every other Sunday at church, 8 p.m. Everyone is invited to attend all services.

Lamotte United Missionary Church—8 miles north of Marlette. Phone Marlette ME 5-2012. Morning worship, 11:00. Sunday School, 10:00. Sunday evening, 8:00. You are cordially invited to attend.

Mizpah-Riverside United Missionary Churches—Rev. Fred H. Johnson, pastor. Phone 8082-K. Mrs. Ethel Whittaker, Secretary. Phone 495. Sunday School 10 a.m. Junior and senior departments. Morning Worship 11 a.m., the pastor preaching. Midweek Prayer Service, Wednesday, 8 p.m. Riverside Church. Morning Worship 10 a.m., the pastor preaching. Sunday School 11 a.m. Classes for juniors and seniors. Cottage Prayer Meeting, Thursday, 8 p.m. You are cordially invited to at-

tend the services of the Riverside and Mizpah United Missionary Churches.

Hillside Brethren In Christ Assembly at the Hillside School, one-half mile west, one-half mile north of Elmwood Store, Hurd Corners Road. Order of the meeting: Sunday 10 a.m. Breaking of Bread. 11:30 Sunday School and Bible Class. 8 p.m. Sunday, Gospel or ministry meeting. Friday 8 p.m. Prayer meeting and Bible reading.

Cass City Assembly of God—Corner Leach and Sixth St. Pastor, E. E. Moses. Sunday School 10:00 a.m. Morning worship 11:00 a.m. Evening evangelistic service 7:30 p.m. Prayer service 7:30 p.m. Thursday. Women's Missionary Council every other Tuesday afternoon.

First Presbyterian Church—John Hall Fish, minister. 11:00 a.m. worship. Church school 9:45 a.m. Junior, Junior High, Senior High, adult 9:45 a.m. Nursery, Kindergarten 11:00 a.m. Primary Monday 3:30 p.m.

Church of the Nazarene—538 Third Street, Rev. L. A. Wilson, pastor. 10:00 a.m. Sunday Bible School. 11:00 a.m., Morning Worship. 7:15 p.m. Young Peoples' Service. 8:00 p.m. Evangelistic Service. 8 p.m. Wednesday Prayer Service.

Cass City Methodist Church—Rev. James Braid, minister. 10:00 a.m., Church school, nursery through adults. 11:00 a.m. morning worship. Junior High MYF, 6:00 p.m. Sunday. Senior High MYF, 7:00 p.m. Sunday. Choir Practice, 7:30 p.m. Thursday.

Novesta Baptist Church—Pastor, Rev. George Harmon. Sunday School, 10 a.m. Worship service, 11 a.m. Youth meeting, 7 p.m. Evening service, 7:30 p.m. Midweek service Wednesday, 7:30 p.m.

The Lutheran Church of The Good Shepherd—Garfield and Maple, Cass City. Paul H. Heitmann, Pastor. 9:30 a.m. Worship service. 10:30 Sunday School. New Year's Eve Communion Service 7:30 p.m.

Novesta Church of Christ—George Getchel, Minister. 10:00 Bible School. Chuck McConnell, Supt. Mardel Ware, Jr. Supt. Classes for all ages. 11:00 Morning Worship "I was glad when they said unto me, Let us go into the house of the Lord." 8:00 p. m. Evening Worship An hour of praise and prayer Wednesday 7:00 Choir Practice 8:00 Prayer meeting and Bible Study.

Shabbona RLDS Church—2 miles east of M-53 on Shabbona Road. Elder Howard Gregg, pastor. Associate pastor, Elder Dean Smith.

Church School 10 a.m., Voyle Dorman, church school director. Church services 11 a.m. Zion League meetings Friday evening once a month. Wednesday evening worship service 8 p.m. Women's department meeting third Thursday of each month. Leader Mary Kritzman. Everyone is invited to attend all services. **Sunshine Methodist Church**—Church School 10:30. Worship Service 11:30. Wednesday evening prayer service and Bible study.

St. Agatha Church, Gageton—4672 South Street, Telephone NO-5-9966. Frank L. McLaughlin Pastor. Mass Schedule: Sunday 8:30 and 10:30 a.m. Holy Days 7:00 a. m. and 8:00 p. m. Week Days 8:15 a.m. Funeral and nuptial Masses by appointment. Confessions: Daily before Mass Saturday 3:30 and 7:30 p. m. High School Religion Monday 7:30 p.m.

Deford Methodist Church—Sunday services: Church, 9:30 a.m. Rev. Alan Weeks. Sunday School, 10:30 Sanctuary Leola Retherford, superintendent. Sunday evening—Youth meeting, 7 p.m. Evening service, 8 p.m. Prayer and Bible study, Wednesday, 8 p.m., in the church. Family fellowship, fourth Friday night of each month. WSCS, second Tuesday of each month. Primary department, Mrs. Ruth Kelley, supt.

Gageton Church of the Nazarene—Russell Stanley, pastor. Denos Neal, Sunday School Superintendent. Sunday School 10:0. Worship Service 11:00. Young Peoples Service, Edward Howard, president, 7:00. Junior Service, Shirley Howard, director, 7:00. Evangelistic Service 7:30. Mid-week Service, Wednesday, 7:30.

St. Pancratius Church—Schedule of Masses 7:00 Low Mass 9:00 High Mass 11:00 Low Mass Confession, Saturday 3:30 to 4:30, 7:30 to 8:30.

Holbrook Baptist Church—Pastor, Milton Gelatt. Sunday School, 10 a.m. Morning Worship, 11 a.m. Evening service, 7:30 p.m. Bible Class and Prayer Wednesday 7:30

First Baptist Church—Cass City. Rev. Richard Canfield, pastor. Sunday Services: Sunday School, 10 a.m. Worship service, 11 a.m. Youth meeting, 7 p.m. Prayer groups, 7:00 p.m. Evening Service 7:30 p.m. Wednesday, 7:30 p.m. prayer service.

Salem Evangelical United Brethren Church—Corner of Aie and Pine streets, Cass City, Rev. Samuel Roy Wurtz, pastor. Sunday services: Bible school 10 a.m., Don Buehry - superintendent. Morning worship service at 11 a.m. Prayer service each week at 2:00 p.m. Friday in the church.

Gageton Methodist Church—Fred Werth, pastor. Worship service 9:30 a.m. Sunday school for all ages at 10:30 a.m.

New Greenleaf United Missionary Church—Homer E. Bassett, pastor. Morning worship, 10:00 a.m. Sunday School, 11:00 a.m. Evening services at Bad Axe. Cottage Prayer service at Greenleaf, Thursday, 8 p.m. You are cordially invited to attend all services.

Slate Ice Review At Flint's IMA

Holiday On Ice of 1963 will open January 13 at the IMA Auditorium in Flint for a four-day engagement through Jan. 16, presenting six complete shows. Morris Chalfen, the international showman, has assembled an exciting array of champions and new personalities for the 18th edition of his ice spectacular. Rosemarie and Robert Unger, Ray Balmer, The Williams Family, Tommy Allen, Alice Quessy, Jane Morris, Darlene and Jinx, Alfredo Mendoza and Juanita Percely are established favorites returning in featured roles. But, to accent the "new look", 60 per cent of the skating troupe will be new to Holiday On Ice, U.S.A. Barbara Martin, Hanna Walter and Sandy Wirwille make their American debut this year. Barbara Martin, professional world's champion, represented Germany at the last Winter Olympics held in Squaw Valley. Hanna Walter, the 1959 European Champion, was star of Holiday In Europe for the past two seasons. Sandy Wirwille, just 16, turned professional for this edition after an outstanding amateur career as a member of the Detroit Skating Club.

New comedy is in the hands of the great team of Deeley and Leech, number one fun-team of Holiday in Europe, Africa and the Far East for several seasons. Two performances are scheduled Sunday, Jan. 13, at 3:00 p.m. and 7:00 p.m.; Monday and Tuesday at 8:00 p.m.; Wednesday at 4:30 p.m. and 8:00 p.m. At the 4:30 p.m. matinee Wednesday, children through 16 years will be admitted at half price.

BAD AXE MARBLE AND GRANITE WORKS CEMETERY MEMORIALS

Large and Fine Stock of Merchandise

RICHARD CLIFF

4300 West St., Cass City Local Representative

ROBERT M. BADGLEY

Bad Axe, Mich. Phone CO 9-7421

HAPPY NEW YEAR



PEACE

We look to the New Year with the heartfelt hope that the spirit of enduring peace may soon spread to all men and all nations, heralding an even brighter future. Wishing you personal peace, health and prosperity.

THE CHRONICLE STAFF

- MELVA GUNTHER
- BETTY BALL
- DAVE KRAFT
- JIM MOORE
- ART RANDALL
- DOROTHY HAIRE
- JOHN HAIRE

• ALL OUR CORRESPONDENTS

R & M AUTO PARTS

Cass City
SPECIAL Gas Line Anti-freeze 12 oz. Can 29c
Windshield De-icer Spray 14 oz. Can \$1.20

SPECIAL FAMILY NEEDS
Rexall DRUG STORE

A whole year's supply in a beautiful decanter-style bottle
Rexall SUPER PLENAMINS
Your family, or any family you know, can now be sure of adequate vitamin-mineral protection, with SUPER PLENAMINS to supplement their diets. Exclusive Rexall formula contains 11 vitamins and 10 minerals, including liver concentrate and iron.
365 TABLETS (Save \$8.76 over small size)
AMERICA'S LARGEST SELLING VITAMIN-MINERAL PRODUCT
\$7.50

Rexall BISMA-REX POWDER
Fast relief from acid-indigestion. Calms "butterfly stomach", Pink or white.
5 oz. 98c

1963 WEATHER CHART CALENDAR
With our compliments
Just ask for your
1963
Rexall
FAMILY ALMANAC
Hurry, Get Yours Today

Rexall THRU
Goes thru the skin to kill muscle pain. Warming LINIMENT or cooling ANALGESIC.
2 oz. 149c

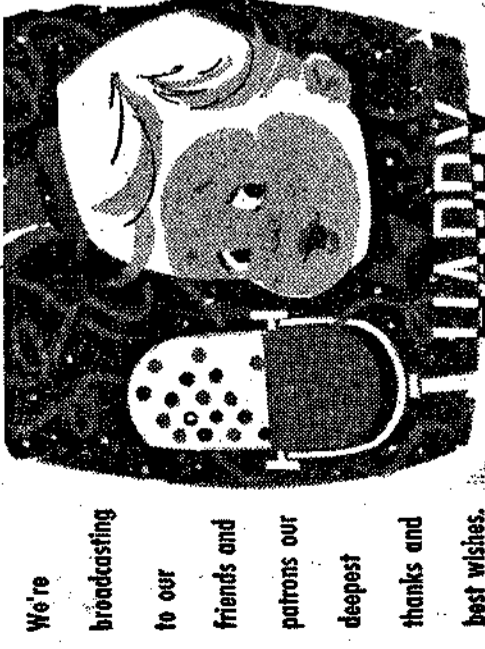
At Last!
AVAILABLE IN CASS CITY
DuBarry Fine Cosmetics
1. Lipstick and powders
2. Complete Treatment line
3. Deodorants and face creams
4. Eye and complexion cosmetics

wishing you the best of HEALTH for the Holidays!
We wish we could wrap up for you a "health package" for you and your family, especially for the happy holidays. Even if we could, we hope you won't need one. But, should you feel under par, check with your doctor. If he gives you a prescription, bring it to us for prompt, personal service.
YOUR Rexall PHARMACY

STORE HOURS
Monday, Wed., Fri., Sat. 8 a. m. - 9:30 p. m.
Tuesday & Thursday 8 a. m. - 6 p. m.
Open Sunday 9 a.m. - 2 p. m. Alternating with Mac & Scotty.
PRESCRIPTION SERVICE STORE 872-2075
NIGHT EMERGENCY NUMBER 872-2555

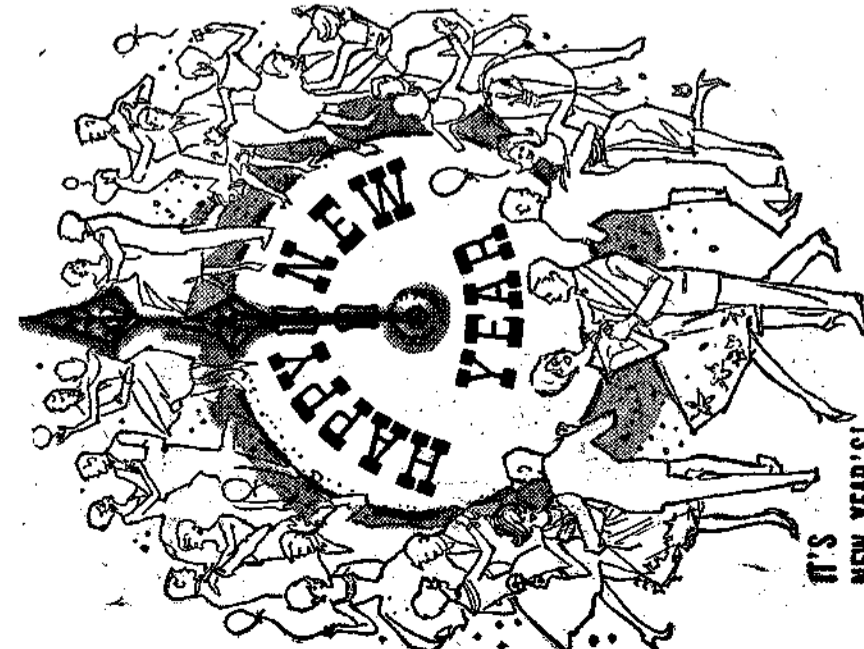
WOODS DRUG STORE

"GUARDIANS OF YOUR HEALTH"



KING'S CLEANERS
Cass City

We're broadcasting to our friends and patrons our deepest thanks and best wishes.

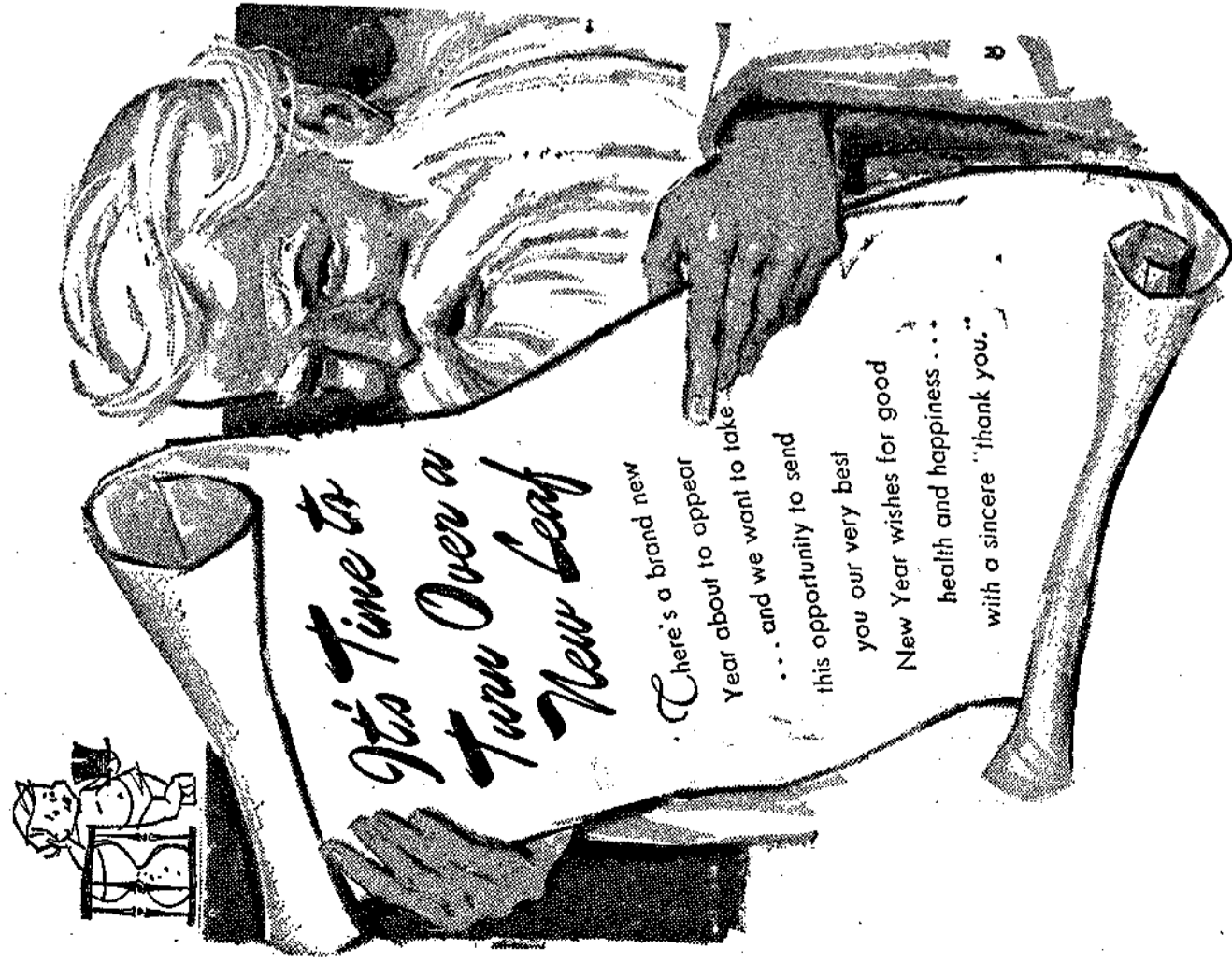


GROSS & MAIER
Cass City

Jim, Paul, Jim S. Bruce, Ginny, John, Bob

IT'S NEW YEAR'S!
Time to greet our friends... time to say "Thanks" for your kind patronage.

Cass City



MAC & LEO SERVICE
Cass City

It's Time to Turn Over a New Leaf
There's a brand new Year about to appear... and we want to take this opportunity to send you our very best New Year wishes for good health and happiness... with a sincere "thank you."

Bowling News

City League table listing teams like Stafford, Helwig, Peters, etc. with scores.

Merchant Bowling League

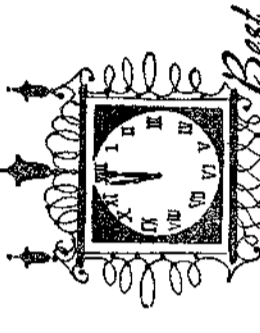
Standings of week Dec. 19 table for Merchant Bowling League.

Franchisee table listing names like Frutiger, Helwig, Evans, etc.

Teams (B) table listing teams like Iseler's, Frankenthum, etc.

Personal News and Notes from Gagetown

Alta Society... preceding the St. Agatha Altar Society meeting... James LaFave, Corinne and Billy and Mrs. George Purdy...



Best Wishes in the New Year and Thanks!

Herr Radiator

Before Christmas people are armed with a list... Mrs. Anna Close went to Muskegon Wednesday to spend the holidays with her son...

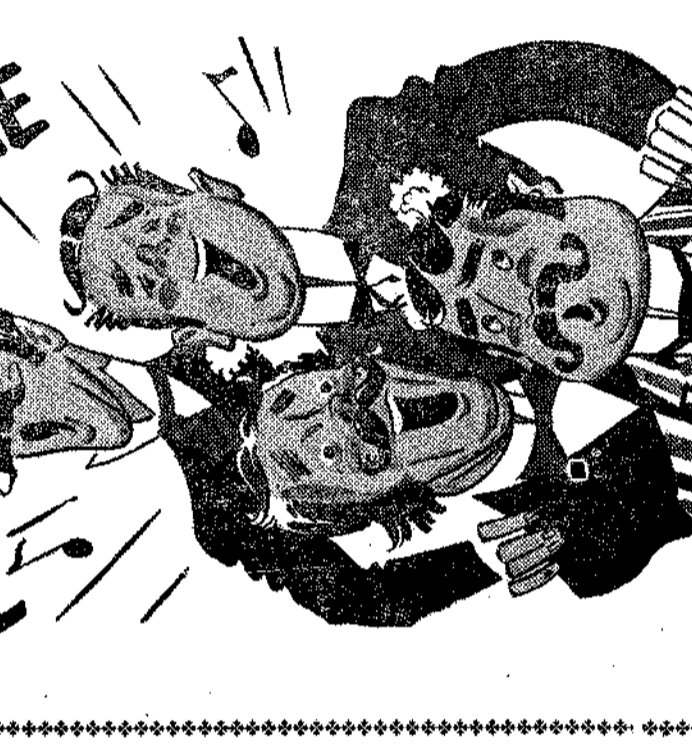
what's ahead

We hope a successful year for you, and an opportunity for us to serve you!

NEED MOBIL SERVICE

Jerry, Clayton and Chuck Cass City

Greetings for the New Year



As the bells ring out the old year... please accept our sincere gratitude for the friendly associations we have enjoyed with all our customers and neighbors...

Farm Produce Co.
Purina Chow - Coal - Grinding
Cass City

Large table with multiple columns listing bowling scores, league standings, and team names.

MAC & SCOTTY DRUG STORE
Cass City

MAC & SCOTTY DRUG STORE
Cass City

MAXWELL HOUSE
COFFEE 1 lb. Can
 With Coupon **49c**

— CLIP THIS COUPON —

SAVE 16c
 With purchase of (Maxwell House)
COFFEE 1 lb. Can **49c**
 Good only at your IGA Food Store
 Expires Monday December 31st



TableRite
EGG NOG Quart **59c**
 IGA
PEANUT BUTTER . 18 oz. jar **39c**
 Dole Crushed
PINEAPPLE . . . 4 No. 211 cans **89c**
 Dole Chunk
PINEAPPLE . . . 4 No. 211 cans **89c**
 Dole
PINEAPPLE JUICE 4 No. 211 cans **89c**

Hi C
FRUIT DRINKS 3 46 oz. cans **\$1.00**
 100 Count - Independent
ASPIRIN Only **15c**
 In Oil
MAINE SARDINES . . Flat can **9c**
 Taste O Sea Frozen
FISH STICKS . . . 1 1/2 lb. pkg. **69c**

**Happy '63
 New Year**



FROM ALL

OF US

AT IGA!

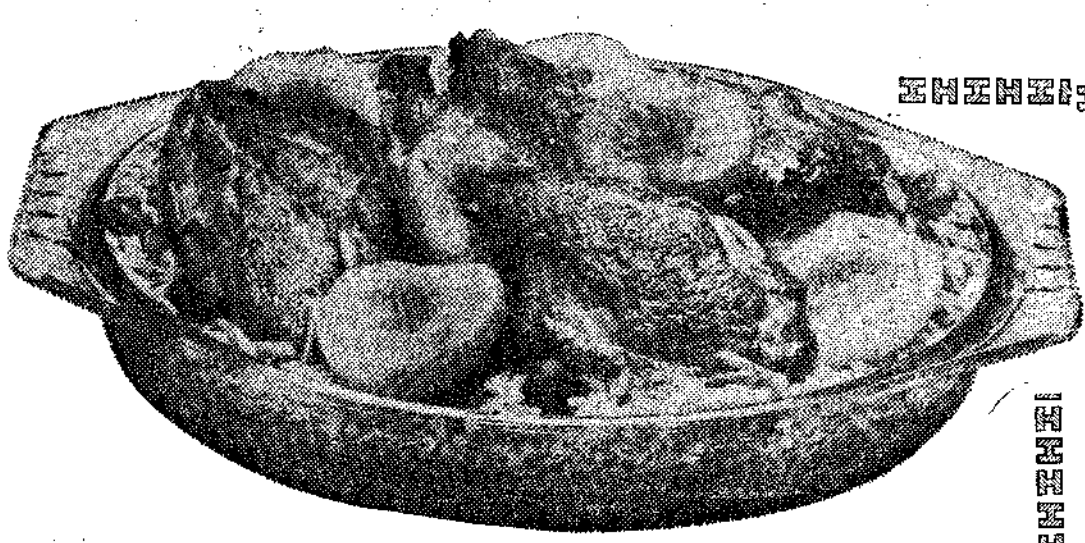
...A VERY HAPPY AND PROSPEROUS NEW YEAR!

TableRite Grade A - Fresh Frying

CHICKEN Whole lb.

25c

IGA FANCY
TOMATO JUICE
 4 46 oz. cans **\$1.00**



=====

Only The Finest Meat Values At IGA

Hygrade Ring **BOLOGNA** lb. **49c**
 Hygrade - Liver **SAUSAGE**
 Whole or Half **HOCKLESS HAM** . . lb. **57c**
 Fresh **OYSTERS** 12 oz. tin **95c**
 TableRite Sliced **BACON** lb. **59c**
 TableRite - Skinless **FRANKS**
 Hygrade Polish **SAUSAGE**
 Fresh - Smoked **WHITE FISH** lb. **69c**
 West Virginia **BONELESS HAMS** . . lb. **89c**
 Fresh **CHICKEN BREASTS** . . **45c**

IGA FOOD MAGIC!
 by Eddie Doucette

BAKED TABLERITE HAM

Place TableRite ham on rack, if possible in shallow baking pan. Bake in slow oven (325°), uncovered. (A TableRite ham is a tenderized ham and has merely to be heated through.) Remove from oven 20 minutes before it is completely baked. With a sharp knife, score into diamond shapes. Insert whole clove into center of each diamond.

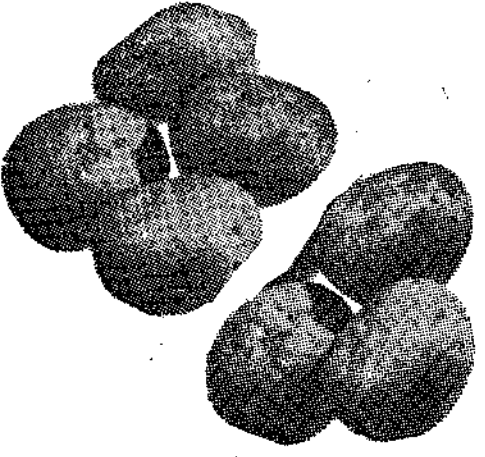
To glaze ham, spread entire surface with mixture of prepared mustard, brown sugar and honey. Return to oven (375°) until surface is glazed, about 30 minutes. Baste a few times to make sure glaze catches. Serve hot with mashed or boiled potatoes and your choice of vegetable.

IGA - TOMATO **CATSUP** 6 14 oz. Bottles **\$1.00**
 IGA **GRATED TUNA** 5 Flat Cans **\$1**
 Early Garden **FREESTONE PEACHES** 4 2 1/2 Cans **\$1**

Detergent **LIQUID CHIFFON** 22 oz. Size **39c**
 IGA **FROZEN DINNERS** each **39c**
 Chef Delight **CHEESE SPREAD** 2 lb. loaf **39c**
 Sunshine **SNAX ASSM'T** Price As Marked

KRUNCHEE **POTATO CHIPS** pkg. **49c** PHILADELPHIA **CREAM CHEESE** 8 oz. pkg. **29c**

Lightens the flavor
LEMONS 6 FOR **49c**
 Flavor Upper
LIMES 6 FOR **49c**
 Crisp, Crunchy, Pascal
CELERY Each **19c**
 Radishes or
GREEN ONIONS Each **9c**



U.S. NO. 1 - MICHIGAN
POTATOES 25-lb. Bag **59c**

PRICES IN EFFECT AT ALL 3 IGA FOODLINERS

KINGSTON
 FOODLINER

CASS CITY
 FOODLINER

CARO
 FOODLINER

