

ERLA FOOD CENTER

NEXT TO TUSCO PRODUCTS, CASS CITY

PLENTY OF FREE PARKING



Savings By The Basketful at Erla's

**Our Every Day Low Prices, Wholesale To You
Meat Prices and Super Week-end Specials
Add Dollars To Your Food BUDGET Every
Week—Check and See For Yourself**

**OPEN
FRIDAY and
SATURDAY
TILL 9 p.m.**

**BEER—WINE
TO
TAKE OUT**

WE DO
**CUSTOM
SLAUGHTERING**
Cutting, wrapping, curing
and smoking Every day of
the week.

**CRUSHED
ICE**
For Sale At
All Times

**CAPON
CHICKENS**
FOR ROASTING OR FRYING

lb. **39c**

HOME MADE
BULK
SAUSAGE
4 lbs. **\$1.00**

ERLA'S HOME MADE
SLAB BACON chunk lb. **49c**

ERLA'S HOME MADE SLICED
LARGE BOLOGNA lb. **39c**

HICKORY SMOKED PRE-COOKED
Picnics lb. **35c**

FRESH PRODUCE
PASCAL
Celery size 24 stalk **19c**
NEW
Cabbage lb. **5c**
U. S. No. 1 COOKING
Onions 3 lb. bag **25c**
LARGE GREEN
Peppers ea. **5c**
McINTOSH
Apples 8 lb. bag **59c**

out of this world
**FOOD SAVINGS
BIG 10c SALE**

BLUE TOP CUT
Wax Beans
OUR FAVORITE
Green Beans
OUR FAVORITE
Peas
BONNELLES
Spaghetti
STOKELY'S
Diced Beets

10c

FROZEN FOODS
TOP FROST
PEAS & CARROTS 2 for 35c
TOP FROST
MIXED VEGETABLES 2 for 39c
TOP FROST
PEAS 2 for 35c
TOP FROST
STRAWBERRIES lb. pkg. **33c**
DARTMOUTH
ORANGE JUICE 4 6-oz. cans **99c**

HYGRADE
Chili With Beans 1-lb. can **25c**

MUSSELMAN'S
**Apple
Sauce** 2 15-oz. jars **29c**

CROWN OLD FASHIONED
Barrel Kraut qt. jar **25c**

REAL GOOD
Polish Dills 1/2-gal. **49c**

ALL BRANDS
COFFEE
lb. tin **79c**

KOUNTY KIST WHOLE KERNEL
CORN 2 cans **23c**

VELVET
Peanut Butter 10-oz. glass jar **35c**
L & S
Grape Jam 10-oz. glass **19c**

We Have A LARGE SUPPLY
HALLOWEEN CANDY

SWEET APPLE
CIDER gal. jug **59c**

PURE GRANULATED
SUGAR
5 lb. bag **47c**

Tuscola County Board of Supervisors

Official Proceedings

Table with columns for date, item, and amount. Includes July Session 1958, July Session 1959, and various financial reports.

the state for use in penal institutions because of sanitary reasons. This is not an expensive proposition as you will not need the shower heads...

News from Gagetown Area

The Williamson Farm Bureau met Wednesday evening at the Williamson School with 30 members present. The topic under discussion was "Members Must Decide Farm Bureau Future"...

Advertisement for Leonard's triple WINTER DRIVING GUARANTEE. Includes text: "CHECK YOUR LEONARD DEALERS 'SEE ME FOR LEONARD'S triple WINTER DRIVING GUARANTEE!' the most complete winter protection you can get... anywhere!"

Home Demonstration Meeting—Eleven members and one guest, Mrs. Dennis Rocheleau, attended the Home Demonstration meeting Wednesday at the home of Mrs. L. C. Purdy.

Typewriter and Adding Machine Ribbons for all model machines. CHRONICLE Phone 13

Advertisement for Copeland Bros. Service and Adam's Leonard Service. Includes text: "Copeland Bros. Service 6254 Main Phone 49 Adam's Leonard Service Phone 7146-W On M-53 4 south of M-81"

Advertisement for Siegler SUPER FLOOR HEAT. Includes text: "NEW the patented SIEGLER now gives you amazing SUPER FLOOR HEAT PATENTED built-in BLOWER! PATENTED Inner HEAT TUBES PATENTED 100% SAFETY! PATENTED Automatic SAVINGS! Siegler PATENTED FORCED-AIR OIL HOME HEATER Come in for a FREE hot demonstration! Gambles AUTHORIZED DEALER The Friendly Store Cass City, Mich."

Advertisement for MGM movie 'Cat on a Hot Tin Roof' starring Elizabeth Taylor and Paul Newman. Includes text: "MGM PRESENTS 'Cat on a Hot Tin Roof' STARRING ELIZABETH TAYLOR PAUL NEWMAN BURL IVES Jack CARSON Judith ANDERSON STARTS THURSDAY SATURDAY OCTOBER 25 at 2 p.m. PLUS 50 Minutes of COLOR CARTOONS Children 25c - Adults 40c NOTE: 'Francis in the Navy' Also Shown Sat. Midnite NEXT WEEK: NOV. 2 - 6 'DAMN YANKEES'"



YOU CAN'T MAKE A MISTAKE WHEN YOU BUY...

TABLERITE MEATS

CHOICE TENDER TABLERITE

RIB STEAK 69¢ lb.

A tried and true favorite with all the family, you get full value, wholesomeness and nutrition in IGA'S quality beef.

PHILADELPHIA

CREAM CHEESE

3-oz. pkg. **10c**

Hi Neighbor!

We're celebrating! It's FALL FESTIVAL time again! Our opportunity to feature the IGA BRANDS... IGA TABLERITE and TABLEFRESH... which YOU have made so popular! And it's YOUR opportunity to SAVE on QUALITY FOODS! Your friendly NEIGHBORHOOD IGA retailer wants you to take advantage of the VALUES which IGA'S FALL FESTIVAL OF IGA BRANDS allows! Shop at IGA... TODAY!

THIS WEEK'S "NEAT TIP"

A spring clothespin mounted above your work table holds your recipe card... no chance to soil or drop it!

BLADE CUT

CHUCK ROAST 45¢ lb.

IGA TABLERITE THICK

Sliced Bacon 2-lb. pkg. **\$1.19**

IGA TABLERITE **Ground Beef** lb. **49c**

IGA TABLERITE **Short Ribs** lb. **49c**

SUNSHINE KRISPY **CRACKERS**

lb. Box **29c**

NABISCO **COOKIES** DATE AND NUT lb. **47c**

Swift's Premium

TOM TURKEYS 16-18 lb. avg. **39c** lb.

IGA TABLERITE

Pork Sausage lb. roll **49c**

MULLER'S OVEN-FRESH CHERRY

COFFEE CAKE REG. PRICE 39c - SAVE 10c Special Price **29c**

IGA

PEAS 2 17-oz. cans

29c

IGA

PANCAKE MIX

5 lb. bag **43c**

VALUABLE COUPON **FREE \$5.00**

Worth of "Muchmore" stamps when you take this coupon to Foodtown or Frantz IGA and purchase

JOHNSTON

COOKIES 2 pkgs. **58c**

YOUR CHOICE—VANILLA TWILIGHT DESSERT, MELLO DROPS, ICED GINGER OR MELLO STRIPS

GOOD UNTIL OCT. 28, 1958

VALUABLE COUPON **FREE \$5.00**

Worth of "Muchmore" stamps when you take this coupon to Foodtown or Frantz IGA and purchase

IGA KAESPREAD

Cheese Spread 2 lb. pkg. **69c**

GOOD UNTIL OCT. 28, 1958

IGA FROZEN **MEAT PIES** 5 pkgs. **\$1.00** CHICKEN-BEEF-TURKEY

IGA DELUXE, Reg. or drip **COFFEE** lb. vac. tin **79c**

NON-SCUFF **SIMONIZE** qt. size **98c**

IGA ROYAL GOLD **Ice Cream** 1/2-gal. **69c** VANILLA OR 3 FLAVORS

IGA **Potato Chips** lb. bag **59c**

SEE OUR VALUE DAYS SPECIALS ON ANOTHER PAGE IN CHRONICLE

GARDEN FRESH PRODUCE

NORTH DAKOTA RED **Potatoes** 10 lb. bag **49c**

1-LB. CELLO PKG. **Cranberries** **29c**

CALIF. PASCAL **Celery** lg. stalk **23c**

SNOWY WHITE **Cauliflower** ea. **29c**

BLUE BONNET **Margarine** 4 lbs. **\$1.00**

IGA **Tomato Juice** 46-oz. can **29c**

IGA **APPLE SAUCE** 2 303 cans **31c**

10c OFF WITH LABEL—IGA 6-oz. jar **Instant Coffee** **79c**

7c OFF GOLDEN **FLUFFO** 3 lb. can **84c** Shortening

FRANTZ MARKET



FOODTOWN MARKET

PRICES GOOD AT BOTH IGA MARKETS IN CASS CITY

BIRDS EYE FROZEN

PEAS

SAVE 5c WITH COUPON ON BOX

2 10-oz. pkgs. **39c**

Marlette Livestock

Table with livestock prices including Cattle, Pigs, and Hogs. Columns include item, weight, and price.

BAD AXE MARBLE AND GRANITE WORKS

Advertisement for cemetery memorials and granite works, listing services and contact information.

Advertisement for RILEY'S FOOT COMFORT shoes, featuring an image of a shoe and descriptive text.

Smart Dairy Farmers Are Choosing Zero's T-20 Vacuum Milk Tank

Large advertisement for Zero T-20 vacuum milk tanks, including images of the tank and detailed text about its features.

BOWLING NEWS

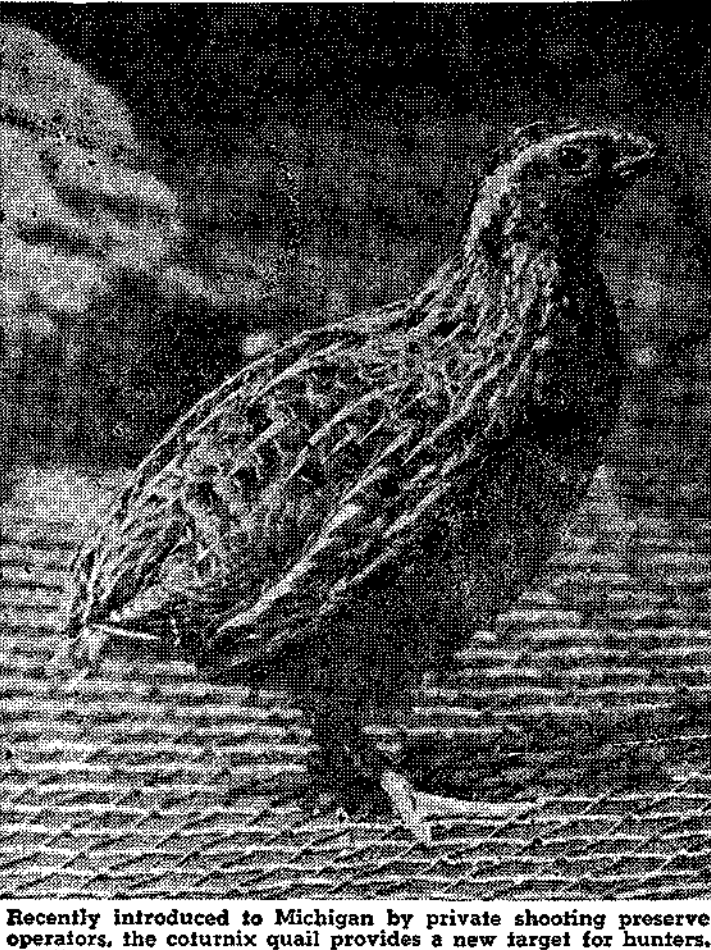
Table of bowling league standings for Ladies City League and Merchants League.

Final Rites Today For Mrs. Greenleaf

Obituary notice for Mrs. Phoebe Greenleaf, detailing her life and funeral arrangements.

Obituary notice for Mrs. Phoebe Greenleaf, detailing her life and funeral arrangements.

Newcomer to Michigan



Recently introduced to Michigan by private shooting preserve operators, the coturnix quail provides a new target for hunters.

Marriage Licenses

List of marriage license applications from Tuscola County, including names and dates.

Schedule Film at Fraser Church

Announcement of a film screening by the Youth Fellowship of the Fraser Presbyterian Church.

Caro Livestock Auction Yards

Table of livestock auction prices for Caro, Michigan, listing items like Veal, Cattle, and Hogs.

ORDER FOR PUBLICATION

Legal notice regarding the estate of Donald E. McAlister, including details of the probate court proceedings.

To Install OES Officers Oct. 29

Announcement of the installation of new officers for the Echo Chapter OES, including a list of names and positions.

Varied Program for Cassland Group

Report on the activities of the Cassland Farm Bureau group, including a list of members and their contributions.

Table of general election results for November, listing candidates and their vote counts.

Cemeteries

Advertisement for cemeteries and memorials, featuring a photograph of a tombstone and promotional text.

Official Proceedings

Large table of official proceedings and resolutions, including names of officials and details of various motions and resolutions.

Advertisement for Charles F. Mudge, local representative, with contact information.

Advertisement for Camings Memorials, featuring a photograph of a woman and text about their services.

FREDERICK STORE

Address and contact information for Frederick Store, located at 6229 Main St. in Cass City.

State Beet Quota Down for 1959

This is a good month to look for "specials" on beef at your market. According to Mrs. Frances T. Clark, cooperative extension agent in home economics, large supplies of choice beef should be available, along with seasonal supplies of lower-grade beef. Choice grade beef comes from young animals and has fat marbled throughout it. It is usually tender, juicy and flavorful -- containing less fat than the higher grade, prime.

And here's a tip for shoppers: The top grade and most expensive cut of meat is not necessarily the best buy or the most nutritious.

Different grades and cuts suit different cooking purposes.

Choice beef gives variety to meals because a particular cut may be cooked in many different ways. For example, choice top round may be broiled, pan fried or braised; whereas lower grades are not tender enough to broil. Likewise, where a lower grade rump is not tender enough for oven roasting, a choice rump roast or blade cut may be roasted in the oven or made into a delicious pot roast.

The order in which crops appear in the rotation can make a difference in yields, say Michigan State University farm crops specialists.

The Want Ads Are Newsy Tool

MICHIGAN MIRROR NEWS BRIEFS

By Elmer E. White
Michigan Press Association

Poverty in state government can wait until after the Nov. 4 election.

Leaders of both parties are happy about the decision of a legislative study committee to hold up its final report and recommendations until after voters go to the polls.

They know there will have to be new taxes if the state is going to avoid a \$50,000,000 to \$80,000,000 deficit by next June 30. The present tax pattern is described as a "patchwork" put together to meet various crises which occurred during the years. But any change in the name of improvement is still likely to cause great reaction.

Parts of the new plan almost leaked out before top candidates headed for the hustings to harvest votes.

The first leak developed last winter when Rep. Rollo G. Conlin (R-Tipton), chairman of the committee, released a tentative report favoring the increase in the intangibles tax.

For weeks, there was conjecture that all bank deposits and the fixed incomes of old folks would be raided.

To make it worse, Gov. Williams supported the idea as the top Democrat. This brought both parties into the fray and the taxpayer sat on the edge of his chair, empowered only to worry.

The legislature finally dropped the idea as Conlin pleaded for more time to develop his whole program, rather than run with the ball after only one of several ideas had been pursued. More time and more facts were required.

Through the summer the research people for the committee worked.

Ominous sounds of an income tax for Michigan came from several sources.

Democrats, led by Williams to abhor anything that sounds like "a consumer tax" (and only people pay non-consumer taxes, too) are saying privately it is "the fairest tax of all."

U-M Prof. Harvey E. Brazer, research director of the legislative tax study, casually mentions the income tax idea and charges that the legislature must get down to work in 1959 and seek out new sources of revenue.

Officially, nothing has been said about any new tax. But, wherever candidates gather, they know what faces the state in 1959 and also that the income

tax is the last new source of sizeable revenue.

Brazer's proposals, he promised, will come up with ideas the legislature can use for "new sources of revenue, but without hurting business and industry."

Investigators on legislative interim committees have come up with one governmental ill administrative agencies might have trouble explaining away.

They are charging that agencies are spending more time looking for loopholes than trying to follow legislative intent.

Highway officials spent \$52,000 for a tourist information lodge at Mackinaw City. Legislators said they did it without legislative authority in the appropriation bills.

Highway officials said the legislature had not forbidden that use of the money.

Senator L. Harvey Lodge (R-Drayton Plains) said he could think of 1,001 things the legislature did not forbid the highway department to do.

Mental health officials were charged with improperly using

money to remodel the home of the superintendent of Ionia State hospital.

The reasoning was identical -- nothing in any law barred them from using the funds.

Senator Edward Hutchinson (R-Fennville) said that in both cases the legislature had opportunity to approve the items but did not. That, he said, established legislative intent.

The Lodge committee is looking for other expenditures, not disapproved -- but not approved, either.

"The legislature has got to fight for its place in the sun," said Hutchinson.

So he said, appropriations bills will be written in much more detail with language specifying a great number of things for which the money cannot be used.

Many of them can be covered in short, crisp blanket phrases, but Hutchinson said the bills would be longer and -- perhaps -- harder to understand.

Davy Jones is the popular name of sailors for an evil sea spirit or the devil generally.

All Corn Eligible For Price Support

"Know how much corn you're leaving in the field?" asks Don Kebler, county extension agent in agriculture. Chances are harvest losses in the form of shelled corn on the ground and ears missed by the picker are amounting to about 10 per cent of the crop.

This average loss valued at \$1 a bushel would cost you \$8 an acre on an 80 bushel crop. Kebler suggests you check to see exactly how much corn you are losing. If it is very much, take immediate steps to correct the loss.

Here's how to check losses: Measure a distance down a row and pick all ears missed by the picker. For 40-inch rows, check 131 feet; 36-inch rows, 145 feet; 38-inch rows, 137 feet, and 42-inch rows, 124 feet. Each good-sized ear weighing around three-fourths pound represents a loss of about one bushel per acre.

You can estimate shelled corn losses by counting kernels on the ground within a 40 inch square. A count of 20 kernels per square equals about one bushel loss per acre. Take several counts in various parts of the field and average them out to get the estimated loss.

Many farmers in Michigan judge the effectiveness of corn harvest by freedom of husk on harvested ears. They measure "clean picking" by the amount of husk attached to ears in the wagon or crib. This is the least important characteristic of good corn harvest.

There is no price penalty for corn with a few husks attached. There is no increase in spoilage in the crib, at recommended moisture content for harvest, when ears have some husks still remaining. Shelled corn losses are frequently high when the picker is adjusted to remove all the husks. Many farmers would improve their corn profits by paying less attention to husks left on the ears and more attention to ear and shelled corn left in the field.

The following suggestions may help reduce these losses:

Harvest early -- 25 per cent for safe cribbing, 35 per cent moisture where driers are available. Losses increase rapidly as harvest is delayed. In one experiment, losses were 5 per cent on October 26, 8.5 per cent on November 20, and 18.4 per cent on December 7. Growing early maturing hybrids will help reduce losses in that these hybrids can be harvested earlier while weather is more

favorable and stalk lodging is less.

Reduce speed at harvest since losses increase at higher tractor speed. Losses average 7, 10, and 15 per cent for tractor speeds of 2.6, 3.4, and 4.6 miles per hour.

Set snapping rolls as close together as possible to reduce shelled corn losses. Increasing roll speed in thick plantings may help to reduce shelled corn loss and clogging of picker.

Keep picker snouts close to the ground so as to get under the down stalks and bring them to the gathering chain. Drive carefully to center the picker on the row. Driving slightly off center of the row may double picking losses.

Plant hybrids that have good records for resistance to stalk breakage.

Only two persons had signed the Declaration of Independence when it was proclaimed July 4, 1776.

Hens getting high-energy rations will need more water than hens on a low energy ration, state poultry specialists at Michigan State University. Hens should not have to travel more than 15 feet between feed and a water fountain.

AUCTION

Furniture Galore

SATURDAY NIGHT

At 7:30 p.m.
Sunday at 2 p.m.

ALL MERCHANDISE
BRAND NEW

5-pc. oak bedroom suites, your choice; 2-pc. living room suites, your choice; 5-pc. kitchen dinettes, your choice; 9x12 holoenums; lamps; clocks; radios; mattresses and box springs; end tables; cedar wardrobes and chests; step tables; coffee tables; corner tables; 9x12 rugs.

FREE DOOR PRIZES

Appliances, tools, dry goods, jewelry, fishing equipment, many other items.

Buy At Your Own Price

Brennan Furniture

M-15 and North Block Road, two miles north of intersection M-46 and M-15, or three miles south of intersection of M-15 and M-81.

Directly in back of Blumfield Inn Tavern
Open 7 Days A Week

FARM AUCTION

Due to the death of my husband, I will hold an Auction Sale of my personal property at the premises located 7 miles north, 3 miles west and 2 miles north of Sandusky, or 2 miles south and 2 miles east of Argyle, commencing at 1:00 p.m., on—

Saturday, Oct. 25

FARM MACHINERY

- 1 Side Rake
- 3 Section Harrow
- 3 Bottom Plow
- 1 Bottom Plow
- Cultipacker Wheelbarrow
- Weeder Mower Spreader
- Farmall Tractor
- Cultivator and Power Mowing Machine
- Disc Wagon Walking Plow
- Hay Forks, Rope and Pulleys
- Surge Milker

- Grain Drill
- Quantity Woven Wire
- 1 Set Ladders
- Corn Binder Grain Binder
- Corn Chopper Fanning Mill
- Truck 2 Fencers
- Chicken Feeders
- Chicken Water Trough
- 2 Water Tanks
- 1 Kettle, large
- Feed Grinder
- Also other items too numerous to mention

Terms: All sums of \$10.00 and under, Cash; over that amount 6 to 9 months on approved bankable notes.

Mrs. William Vatter, Owner

Earl Roberts, Auctioneer
Phone Snover, 3576

State Bank of Sandusky, Clerk

A BOLD STEP FORWARD

New TAPPAN

"Fabulous 400" ELECTRIC Range

Brilliantly new! Completely unlike any other range you've ever seen or dreamed of -- and the most practical, too!

The Greatest Advance in Range Design in Years

CAN BE
INSTALLED
AS BUILT-IN
UNIT...
fits easily
into any
decorating
scheme

CAN BE
USED ON
CABINET
BASE OR
HUNG ON WALL
AT ANY
HEIGHT

"Fabulous" is the only word to describe this completely different range. Now for the first time, any home can have the convenience and beauty of a modern "built-in"... and many NEW advantages besides... without kitchen remodeling. You can hang it on the wall, place it on a cabinet base -- it's wonderfully versatile. And it takes no more space than a conventional 40" range! It's tomorrow's range TODAY.

SLIDES OUT

SLIDES IN

TWO SET 'N FORGET
AUTOMATIC ELEMENTS
Controls cooking temperatures automatically -- no burning, no scorching, makes all utensils automatic. Plus two 7-heat elements... all four units in line for greater working convenience.

TWO CHROME-LINED
"VISUAL HITE" OVENS
Both illuminated, with glass front doors that let you see everything at convenient eye-level. Automatic clock controlled oven, automatic roast control--meat is kept warm after oven is turned off automatically.

REMOVABLE EYE-LEVEL
ROTISSERIE
Mounted left to right, so you can see the entire roast or fowl turning before your eyes. Controlled automatically from the beautiful "Starita" panel at top of range.

CASS CITY OIL & GAS APPLIANCE CO.

Phone 440

Cass City

CERTIFIED VALUE DAYS

TWO DAYS ONLY

FRIDAY and SATURDAY

OCT. 24 and 25

Save from 10% to 50% On Every Purchase!!

Sponsored By

Cass City Chamber of Commerce

The outstanding price reductions offered in these value days pages will not be repeated. The merchants are offering them to you to again acquaint you with the many fine stores and the variety of merchandise offered every week in Cass City. While taking advantage of these money saving specials Friday and Saturday, look over the rest of the merchandise and see for yourself why you'll want to make Cass City your shopping headquarters.

FREE FREE

Pencils and Balloons For The Kiddies

When Accompanied By Their Parents

One Group \$10.95 and \$11.95

FREEMAN SHOES \$7.95

RILEY'S FOOT COMFORT

Cass City

Certified Values

One Group Bobbie Brooks

Calgary Jackets 14.95 value \$7.95

SPECIAL GROUP

Men's Long Sleeve

Flannel Shirts \$1.98

New Patterns - Variety of colors

Selected Group Ladies'

Sweaters values to \$7.95 \$4.77

HULIEN'S

Cass City

BARGAINS

Men's Schick

RAZORS Reg. 29.50 \$18.95

With Trade-in

REVEREWARE

20% off

All Merchandise Now in Stock

Hoover SWEEPERS

Reg. 97.50 \$59.95

With Trade-In

CASS CITY OIL and GAS APPLIANCE STORE

October DONUT DAYS

Are

VALUE DAYS

At Sommers'

Certified Value 10c Off

THE DOZEN OF ANY VARIETIES

Donuts and Fried Cakes

Friday and Saturday Oct. 24-25

Sommers' Bakery

Home of Irish Bread

Cass City

MEN'S

WORK GLOVES

Men's Golden Brown Boss Work Gloves. Heavy 14-ounce Double Construction for Long Wear. Knit wrists for comfort.

3 pair \$1.00

Large Plastic Laundry Basket reg. 2.98 \$1.66

Holds over a bushel! Won't break, rust. In red, yellow, turquoise.

BEN FRANKLIN

Cass City

CERTIFIED

SPECIALS

1/4-inch

Electric Drills \$9.88

6 1/2-inch Portable

Electric Saw \$29.88

14-piece Punch

Bowl Set \$3.99

1/2 pt., 1 pt. or 1 1/2 pt.

Sauce Pans 12c your choice

GAMBLES

Cass City

FREE \$5.00

WORTH OF MUCH MORE STAMPS

Nothing to buy - just present this ad at either IGA Store

BEET

Sugar 5 lbs. 49c

IGA

Milk Half Gal. 39c

Frantz or FoodTown

IGA SUPERMARKETS

Cass City

OPEN HOUSE

Sunday, October 26

FROM 3 TO 6 P.M.

We welcome you as a parent, teacher, group sponsor or advisor to see our contribution to the youth of this area. Bring your friends. We want to meet you.

FREE REFRESHMENT ADMISSION

Dormey's

Cass City Arena

Phone 330

See The New 1959 Patterns in Magee

ACRILAN

CARPETING

REGULAR \$11.95 sq. yd. 9.95 Special For this Event

Your Choice Latest Decorator Colors!

100 % Nylon

Carpeting As low as 5.95 yd.

TAKE 3 YEARS TO PAY

Let us show you how little it will cost for us to carpet your home from wall-to-wall. Average size room completely installed wall-to-wall for as low as \$1.65 per week.

Little's Furniture

Cass City

Be Ready For That Emergency

ELECTREX WET PROOF

HEATING PAD

3 Positive Heats

Reg. \$6.95 \$4.98 special

The Tooth Brush Buy Of The Year

Rexall Deluxe

Tooth Brush 3 for \$1.29

A Regular 69c Each Value

Wood Rexall Drugs

Cass City

Be Sure To Check All The Values On Both Pages All Are Outstanding Bargains

Certified Value Days

TWO DAYS ONLY!

FRIDAY and SATURDAY

OCT. 24 and 25

Take Your Pencil — Check the Values

These progressive merchants of Cass City are offering to you these values in order to better acquaint you with Cass City as your shopping headquarters.

There has been a special reduction of quality merchandise on these two special days. No matter what your needs may be, you'll find it listed at a SPECIAL PRICE during value days.

SPONSORED BY

CASS CITY CHAMBER OF COMMERCE

SPECIALS

Bisquick . . . 40 oz. **39c**

Dinty Moore
Beef Stew . . . 24 oz. can **45c**

Clearfield
Cheese Spread. .2 lb. box **69c**

Charmin Toilet
Tissue . . . 4 rolls **29c**

Freiburger Grocery
Phone 468 Cass City

**STORE WIDE
10 % off**

On purchase of \$1.00 or more

Every Item in our Store Friday and Saturday

**BUY AND SAVE
Bigelow Hardware**
Cass City

Children's Flannel Lined
Slacks . . . \$1.00
Size 3-3 flannel lined boxer denim slacks.

Printed
BroadCloth 3 yds. \$1.00
Sanforized printed broadcloth in a wide assortment of prints. Regular 59c value.

24x70 Chenille
Runners 2 for \$3.00
Washable chenille runner rug. Non-skid back.

Men's Insulated
Underwear ca. \$1.89
Insulated two piece underwear in easy to wash cotton.

Federated

QUALITY FIRST

Home Smoked
Picnics . . . 39c
Fresh

Ground Beef . . . 49c

Swift's
PREM 39c

Hills Bros.
COFFEE lb. tin 79c

GROSS & MAIER
Cass City

FOR CERTIFIED
Value Days Only
CELOTEX

Lock Shingles

165-pound **\$6.45** per sq.

CASH AND CARRY
Brinker Lumber Co.
Cass City

FREE

BEAUTIFUL
Planted Mum
WITH EACH
Purchase of \$2 or More
Friday and Saturday ONLY
Cass City Floral
Phone 97-W

MEAT BUYS
That Save You Dollars

Home Made Bulk
Pork Sausage 4 lb. \$1.00

Home Made Sliced
Large
Bologna . . . 39c

See our full page of Grocery and Meat values in this issue of the Chronicle.

Erla Food Center
Cass City

Adding Machine AND TYPEWRITER Ribbons

For All Make Machines

REG. 1.00 VALUE **79c**

FRIDAY - SATURDAY ONLY

The Chronicle
Cass City

FREE COFFEE

VALUE DAYS ONLY—
FRIDAY AND SATURDAY

Come on in have Coffee on us while Value Day Shopping.

Bush's Restaurant
Cass City

SAVE!

Star-Kist Light
Chunk Tuna 9 1/2-oz. family size 39c

Duncan Hines
Meat Pies . . . 5 for \$1.00
Beef-Turkey-Chicken

Appian Way
Pizza Mix . . . 3 for \$1.00
Fresh Roasted

Peanuts . . . 3 lbs. \$1.00

Hartwick's Market
Cass City
Open Till 10 Saturday Night

Down Memory Lane

FROM THE FILES OF THE CHRONICLE

Five Years Ago
Star Scout badges were presented to Charles Patterson, Tom Hulien, Bob Hunter and Dick Hanby at the Parents' Night and Court of Honor last week.
The Gordon Drilling Company struck oil on a farm three miles west and a mile south of Cass City. Emory Lounsbury owns the oil rights to the property, which is under lease to Don Rayborn.
Over 375 persons crowded into the Presbyterian Church Sunday night to hear Mrs. Lucile Champion talk of her recent trip to the Holy Land. She also showed colored slides and relics brought back from the trip.
The American Legion Post 507

Ten Years Ago
Mr. and Mrs. Charles Bond celebrated their 40th wedding anniversary Sunday.
Funeral services were held Wednesday at Gagetown for Pfc. Louis Giroux, who was killed in action March 23, 1945, at Ramon, Iwo Jima.
Willis Campbell has been elected to membership in the

Home Extension Agent's Corner
Frances T. Clark
County Home Demonstration Agent

The extension women from the Caro area can begin to think about the workshop on seat weaving and caning. This workshop will be open to any interested homemaker in this area. The date of the first workshop will be November 18 and 19, at the 4-H memorial building from 10 a. m. to 3:30 p. m. If non-extension women will give me their names, I will send them literature so they can have all the supplies they need when they come to the workshop.

As I go about the county, I find that lamb is one of the neglected meats. From now until early spring is the best season for lamb, and some cuts of lamb will help the homemaker stretch her budget. Of course, the favorite cuts are on the leg of lamb, either rib roast or the loin chops.

Have you tried shoulder roasts of lamb? Ask your butcher for a lamb square-cut shoulder roast and have him remove the shoulder meat by cutting close to the ribs and backbone. Then roll the boneless meat and fasten with skewers. Then slice the meat between the skewers for Saratoga chops. Be sure to tell the butcher you want the bones and the trimmings from the rest of the cut so you can use them for a lamb stew dinner.

A shoulder roast will usually weigh about 3 pounds and will cut into six or seven 3/4-inch chops, plus the bones and trimmings. Such a roast will cost around \$1.85 to \$2.00. The chops will be free from all bones and will not have too much fat, so one chop should make an adequate individual serving.

In contrast, rib lamb chops have a great deal of bone, more fat and usually require 2 per person per serving and are more expensive per pound. Also you won't have the ingredients for an extra meal of lamb stew.

To prepare stew, use about 1 cup of water for each pound of meat and let it simmer until the meat is tender. More liquid may be added if needed. Here is an opportunity to add just a little different touch. Why not try seasoning the meat while it is cooking with a small amount of thyme, marjoram or rosemary. It may add just the right flavor for your family.

Your home agent was one of three home agents from the state of Michigan who have been asked to attend a seminar on resource development held on the campus of Michigan State University. I feel very honored to have been selected and hope to bring back to Tuscola County many ideas to help me in my work.

Where oats are included in the swine ration, it will probably pay a farmer to use pelleted feeds, believe swinemens at Michigan State University.

Uncle Tim From Tyre Says:

Dear Mister Editor:
The fellers up at the country store Saturday night covered the situation pretty good, from wimmen to Congressmen and from science to inflation.
What they decided about wimmen and Congressmen might not be fitted to put in a family newspaper. On the subject of science, Ed Doolittle allowed as how it was gitting to the place a feller had to be a mechanic to git his clothes on. He said it took him two year to git used to a zipper on his pants, then his old lady give him a zipper jacket fer Christmas and he has to put cylinder oil on it to make it work. He claims that in another year they'll be putting out a suit of clothes that calls fer a pair of pliers and a screwdriver. Ed thinks the time is not long off when, if you call a doctor, he'll have to fetch along a mechanic to git the patient undressed.
But I'm all in favor of these scientific improvements, Mister Editor. I'm living fer the day when they'll come up with a rooster that won't crow at daylight and salt colored red so's you can tell how much you're gitting on your eggs and potatoes.
When the discussion got down to inflation, I told the fellers that me and Congress handled that situation the same way. We view the situation with alarm, denounce it, deplore it, and set tight and wait fer things to git better.
And if they don't git better, at least they change. Waiting it out is the system me and Congress has been using. This system is especially recommended fer folks with high blood pressure.
Take my pasture fences, fer instant. They've been needing fixing ever since I can remember, but as long as my cattle stay home 80 per cent of the time, I figger I'm about average. It's the same with Congressmen.

Them Congressmen give high prices the same treatment I give my fences. They wait it out, and one morning they pick up the newspaper and find prices has begun to fall a little, then they give out a statement fer the home folks saying they knowed it all the time, that the country is "fundamentally sound."
It's surprising, Mister Editor, what me and Congress git done by waiting it out. About 80 per cent of the country is going to come out alright in spite of Congress, which is a great consolation fer us to know.

Yours truly,
Uncle Tim

RYLAND & GUC, INC.

Plumbing, Heating, Eavestrouthing
Phone 433 Cass City

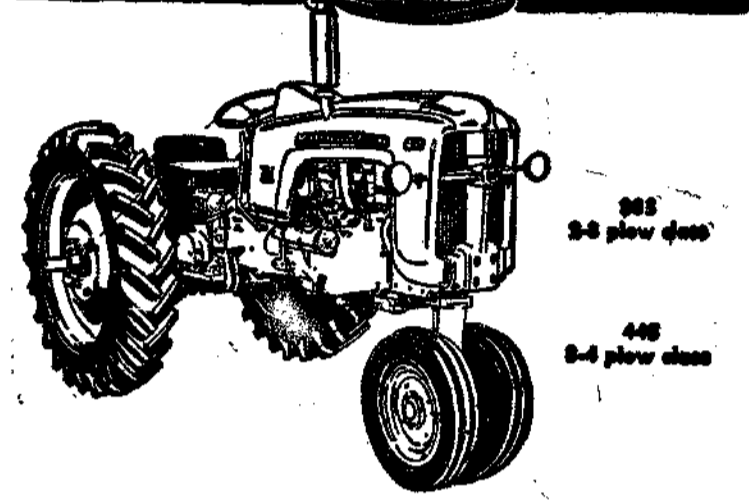
Complete Furnaces, Bathroom Fixtures, Plumbing Supplies

FREE ESTIMATES

We Install All Plumbing, Regardless of Where You Bought It

The Want Ads Are Newsy, Too

NOW IT'S EASY FOR YOU TO OWN A NEW TRACTOR



HERE'S HOW EASILY YOU CAN BUY NOW

- 1 LOW DOWN PAYMENT—your old equipment may cover this.
 - 2 1st PAYMENT—after your 1958 harvest.
 - 3 2nd PAYMENT—after your 1959 harvest.
 - 4 FINAL PAYMENT—after your 1960 harvest.
- Same deal on tools purchased with your tractor.

SEE US TODAY—LET US DEMONSTRATE THESE GREAT TRACTORS—YOU'LL BE CONVINCED

BARTNIK SALES and SERVICE
Corner M-53 & M-81 Cass City

PUBLIC AUCTION

I will sell the following personal property at my farm located 3 miles west and 1 1/2 miles north of Marlette or 2 miles east and 4 1/2 miles south of Kingston, corner of Clothier and Lanaway Roads, on

Saturday, Oct. 25

Beginning at 1 p. m.

- | | |
|---|---|
| <p>CATTLE
(Bangs Tested)</p> <p>Holstein Cow, 5 years old, due January 2
Holstein Cow, 4 years old, due March 18
Holstein Cow, 3 years old, fresh
Holstein Cow, 3 years old, fresh
Holstein Cow, 5 years old, due January 1
Holstein Cow, 6 years old, due April 2
Holstein Cow, 4 yrs. old, due December 15
Holstein Cow, 3 years old, due February 6
Holstein Cow, 3 years old, due January 14
Holstein Cow, 3 yrs. old, due November 20
Holstein Cow, 3 yrs. old, due February 15
Holstein Cow, 2 years old, fresh
Holstein Cow, 2 years old, fresh
Holstein Cow, 2 years old, fresh
Holstein Cow, 4 years old, fresh
Holstein Cow, 2 years old, fresh
Holstein Cow, 4 years old, due March 19
Holstein Cow, 7 years old, fresh
Holstein Cow, 6 years old, due February 26
Jersey and Durham Cow, 7 years old, fresh
Guernsey Cow, 4 years old, due January 20
Jersey Cow, 8 years old, due March 6
Registered Holstein, 7 years old, due February 15</p> | <p>MACHINERY</p> <p>Ford Corn Planter, new
Ford 2-bottom 12-in. Plow
4 Section Harrow
3 Section Harrow
1947 Ford Car, 2 door, radio heater
1941 Ford Motor
New Black Saddle and Bridle
Breast Strap
2 Rubber Tired Wagons
Bed Timbers for Hay Rack
John Deere Drop Head Hay Loader
8-ft. Cultipacker Land Roller
Saddle Blanket with all trimmings, used 6 times (standard western style)
Quantity of Chickens
Jewelry Wagon</p> <p>MILKING EQUIPMENT</p> <p>16 Milk Cans 2 Wash Tanks
7 Can Electric Milk Cooler
12 Gal. Hot Water Heater
2 Unit Surge Milkers
McCormick Deering Pump, 4 unit
Pipe and Stall Cocks for 25 cows</p> |
|---|---|

TERMS: Usual terms. See clerk before day of sale.

Morrell Kasdorf
OWNER

Boyd Tait, Auctioneer,

Phone Caro 352

Marlette State Bank, Clerk

Home Extension Agent's Corner

Frances T. Clark
County Home Demonstration Agent

The extension women from the Caro area can begin to think about the workshop on seat weaving and caning. This workshop will be open to any interested homemaker in this area. The date of the first workshop will be November 18 and 19, at the 4-H memorial building from 10 a. m. to 3:30 p. m. If non-extension women will give me their names, I will send them literature so they can have all the supplies they need when they come to the workshop.

As I go about the county, I find that lamb is one of the neglected meats. From now until early spring is the best season for lamb, and some cuts of lamb will help the homemaker stretch her budget. Of course, the favorite cuts are on the leg of lamb, either rib roast or the loin chops.

Have you tried shoulder roasts of lamb? Ask your butcher for a lamb square-cut shoulder roast and have him remove the shoulder meat by cutting close to the ribs and backbone. Then roll the boneless meat and fasten with skewers. Then slice the meat between the skewers for Saratoga chops. Be sure to tell the butcher you want the bones and the trimmings from the rest of the cut so you can use them for a lamb stew dinner.

A shoulder roast will usually weigh about 3 pounds and will cut into six or seven 3/4-inch chops, plus the bones and trimmings. Such a roast will cost around \$1.85 to \$2.00. The chops will be free from all bones and will not have too much fat, so one chop should make an adequate individual serving.

In contrast, rib lamb chops have a great deal of bone, more fat and usually require 2 per person per serving and are more expensive per pound. Also you won't have the ingredients for an extra meal of lamb stew.

To prepare stew, use about 1 cup of water for each pound of meat and let it simmer until the meat is tender. More liquid may be added if needed. Here is an opportunity to add just a little different touch. Why not try seasoning the meat while it is cooking with a small amount of thyme, marjoram or rosemary. It may add just the right flavor for your family.

Your home agent was one of three home agents from the state of Michigan who have been asked to attend a seminar on resource development held on the campus of Michigan State University. I feel very honored to have been selected and hope to bring back to Tuscola County many ideas to help me in my work.

Where oats are included in the swine ration, it will probably pay a farmer to use pelleted feeds, believe swinemens at Michigan State University.

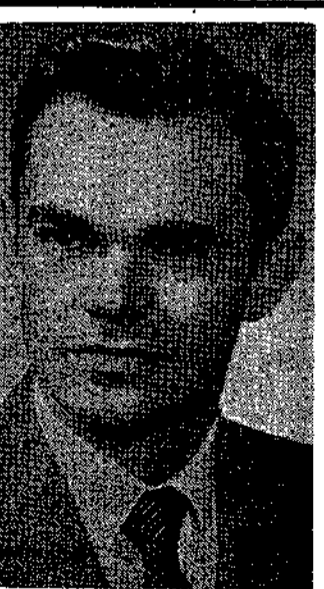
CASS CITY CHRONICLE
652 Main Street
PUBLISHED EVERY THURSDAY
AT CASS CITY, MICHIGAN
MEMBER AUDIT BUREAU OF CIRCULATIONS

National Advertising Representatives: Moras & Fisher, Inc., 10 E. 40th St., New York, 16, N. Y.

The Cass City Chronicle established in 1890 by Frederick Klump and the Cass City Enterprise founded in 1881, consolidated under the name of the Cass City Chronicle on April 20, 1906. Entered as second class mail matter at the post office at Cass City, Mich., under Act of Mar. 3, 1879.

Subscription Price—To post offices in Tuscola, Huron and Sanilac Counties, \$2.50 a year, \$1.50 for six months. In other parts of the United States, \$3.00 a year, 25 cents extra charged for part year order. Payable in advance.

For information regarding advertising and commercial and job printing, telephone No. 14.



ELECT

David N. Andreychuk
FOR
Prosecuting
Attorney
DEMOCRAT

KICK HOODLUMS OUT OF MICHIGAN
Elect **JASON L. HONIGMAN**
REPUBLICAN
ATTORNEY GENERAL

FOOTBALL GAME



CASS CITY HIGH SCHOOL
VS.
CROS.-LEX.

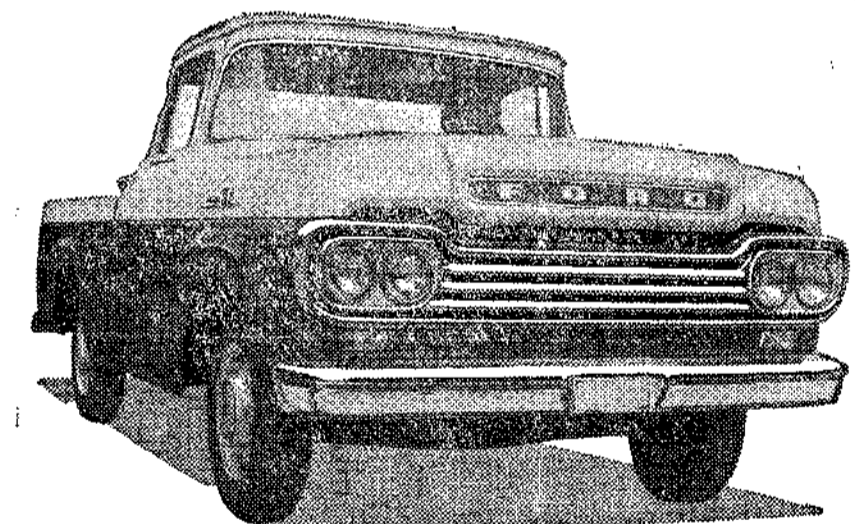
FRIDAY, OCT. 24

STARTING AT 8 P.M.

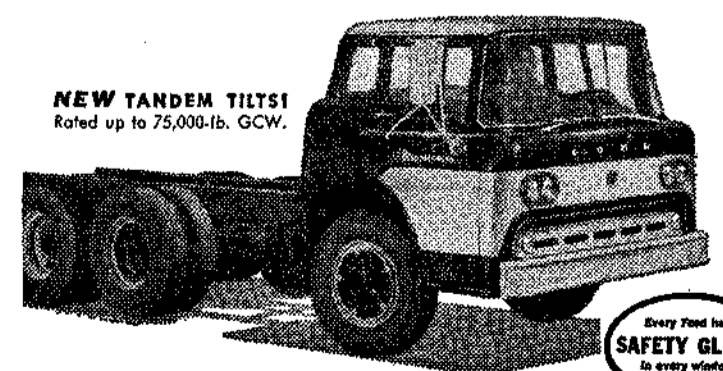
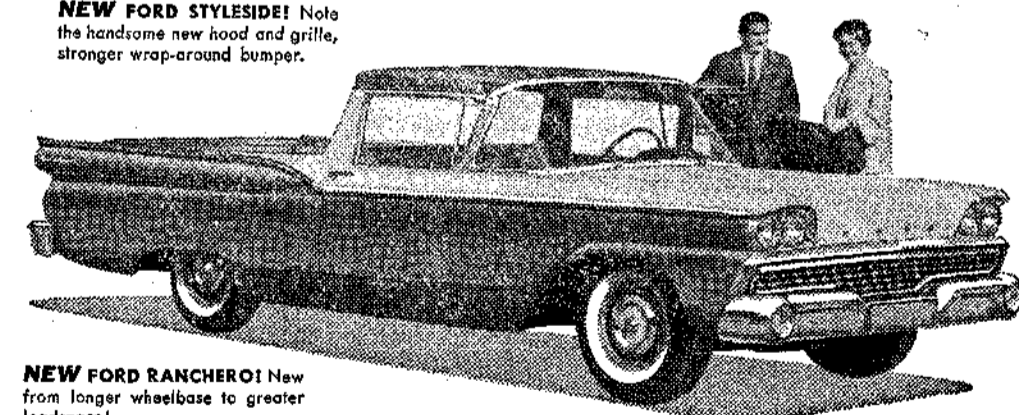
AT

Cass City Recreational Park

Go FORD-WARD FOR SAVINGS



NEW FORD TRUCKS -59



• They're new—Ford trucks for '59! They're here to take you Ford-ward for savings, style and durability! Ford's modern Tilt Cab tandems and 4-wheel-drive pickups are brand-new additions to the Ford line.

Ford's rugged Short Stroke Six now gives you even better gas economy. And behind every '59 Ford stands the industry's outstanding record for durability. An independent study of 10 million trucks proves, for the 13th straight year, that Ford trucks last longer. See your Ford Dealer today . . . and go Ford-ward for modern style and savings!

FORD TRUCKS COST LESS
LESS TO OWN...LESS TO RUN...LAST LONGER, TOO!

Come in Now!

AUTEN MOTOR SALES CASS CITY

PHONE 111